

# Mouse IgG Heavy and Light Chain Antibody

Rabbit Polyclonal Conjugate Biotin

Antigen Affinity Purified

Catalog No. A90-117B

Lot No. 11

---

<b>APPLICATIONS</b>	WB, IHC, ICC, ELISA
<b>SPECIES REACTIVITY</b>	Mouse
<b>AMOUNT</b>	1 ml
<b>CONCENTRATION</b>	1 mg/ml
<b>STORAGE/SHELF LIFE</b>	2 – 8°C / 1 year from date of receipt
<b>PHYSICAL STATE</b>	Liquid
<b>BUFFER</b>	Phosphate Buffered Saline (PBS) containing 0.2% BSA and 0.09% Sodium Azide
<b>ISOTYPE</b>	IgG
<b>ORIGIN</b>	USA
<b>PRODUCTION PROCEDURES</b>	The antibody was isolated by affinity chromatography using antigen coupled to agarose beads and conjugated to biotin.

Prior to conjugation, immunoglobulin concentration was determined using Beer's Law where 1mg/mL IgG has an A280 of 1.4. Biotin/antibody protein ratio is 4:1.

By immunoelectrophoresis and ELISA this antibody reacts specifically with mouse IgG and with light chains common to other mouse immunoglobulins. No antibody was detected against non-immunoglobulin serum proteins. This antibody may cross react with IgG from other species.

Biotinylated antibody was demonstrated by reaction with avidin/peroxidase when coated on microtiter wells. Working dilutions should be determined by the investigator.

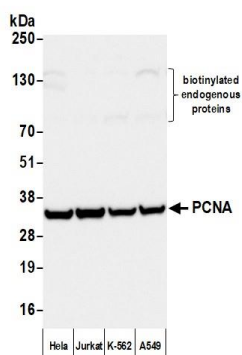
**APPLICATIONS** Centrifuge tube to remove product from lid. Optimal working dilutions should be determined experimentally by the investigator. Prepare working dilution immediately before use.

Western Blot	1:20,000 – 1:400,000
Immunohistochemistry	1:500 – 1:5000
Immunocytochemistry	1:200 – 1:1000
ELISA	1:20,000 – 1:400,000

**APPLICATION NOTES** Not all listed applications have been specifically tested by our laboratory.

**ADDITIONAL INFO** <https://www.fortislifescience.com/p/A90-117B>  
Use the link above to view SDS, a current list of citations, and other product specific information.

This document certifies that this product has met all of the quality control standards defined by Bethyl Laboratories, Inc.  
Michael Spencer, PhD Date: November 22, 2024



**Detection of human PCNA by western blot with Biotinylated Rabbit anti-Mouse IgG Heavy and Light Chain Antibody.** *Samples:* Whole cell lysate (50 µg) from HeLa, Jurkat, K-562, and A549 cells prepared using NETN lysis buffer. *Antibody:* Mouse anti-PCNA Monoclonal Antibody [PC10] (A500-024A) used for WB at 1:1000. *Secondary:* Biotinylated Rabbit anti-Mouse IgG Heavy and Light Chain Antibody (A90-117B). *Tertiary:* HRP-conjugated Rabbit anti-Biotin Antibody (A150-109P). *Detection:* Chemiluminescence with an exposure time of 1 second.