

Mouse IgG3 Heavy Chain Antibody

Goat Polyclonal

Antigen Affinity Purified

Catalog No. A90-111A

Lot No. 250117

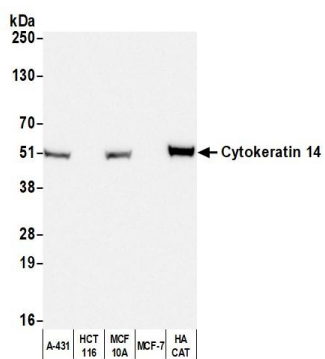
APPLICATIONS	WB, IHC, ICC, ELISA
SPECIES REACTIVITY	Mouse
AMOUNT	1 ml
CONCENTRATION	1 mg/ml
STORAGE/SHELF LIFE	2 – 8°C / 2 years from date of receipt
PHYSICAL STATE	Liquid
BUFFER	Phosphate Buffered Saline (PBS) containing 0.09% Sodium Azide
ISOTYPE	IgG
ORIGIN	USA
PRODUCTION PROCEDURES	<p>Antiserum was solid phase adsorbed to ensure subclass specificity. The antibody was isolated by affinity chromatography using antigen coupled to agarose beads.</p> <p>Immunoglobulin concentration was determined using Beer's Law where 1 mg/mL IgG has an A280 of 1.4.</p> <p>By immunoelectrophoresis and ELISA this antibody reacts specifically with mouse IgG3. Cross reactivity to mouse IgM, IgA, IgG1, IgG2a, IgG2b, IgG2c, and IgE is less than 1%. Some hybridoma clones may express aberrant immunoglobulin-related peptides that are improperly recognized by this antibody.</p>

APPLICATIONS	<p>Centrifuge tube to remove product from lid. Optimal working dilutions should be determined experimentally by the investigator. Prepare working dilution immediately before use.</p> <table><tr><td>Western Blot</td><td>1:1000 – 1:30,000</td></tr><tr><td>Immunohistochemistry</td><td>1:200 – 1:2,000</td></tr><tr><td>Immunocytochemistry</td><td>1:200 – 1:2,000</td></tr><tr><td>ELISA</td><td>1:1000 – 1:30,000; for coating plates 1:100 – 1:500</td></tr></table>	Western Blot	1:1000 – 1:30,000	Immunohistochemistry	1:200 – 1:2,000	Immunocytochemistry	1:200 – 1:2,000	ELISA	1:1000 – 1:30,000; for coating plates 1:100 – 1:500
Western Blot	1:1000 – 1:30,000								
Immunohistochemistry	1:200 – 1:2,000								
Immunocytochemistry	1:200 – 1:2,000								
ELISA	1:1000 – 1:30,000; for coating plates 1:100 – 1:500								

APPLICATION NOTES Not all listed applications have been specifically tested by our laboratory.

ADDITIONAL INFO <https://www.fortislife.com/p/A90-111A>
Use the link above to view SDS, a current list of citations, and other product specific information.

This document certifies that this product has met all of the quality control standards defined by Bethyl Laboratories, Inc.
Michael Spencer, PhD Date: January 17, 2025



Detection of human Cytokeratin 14 by western blot with Affinity Purified Goat anti-Mouse IgG3 Heavy Chain Antibody. *Samples:* Whole cell lysate (50 µg) from A-431, HCT 116, MCF10A, MCF-7, and HACAT cells prepared using NETN lysis buffer. *Antibody:* Mouse anti-Cytokeratin 14 Monoclonal Antibody [LL002] used for WB at 1:1000. *Secondary:* Affinity Purified Goat anti-Mouse IgG3 Heavy Chain Antibody (A90-111A). *Tertiary:* HRP-conjugated Donkey anti-Goat IgG Heavy and Light Chain Cross-Adsorbed Antibody (A50-201P). *Detection:* Chemiluminescence with an exposure time of 10 seconds.