

# Human C–Reactive Protein (CRP) Antibody

Goat Polyclonal

Antigen Affinity Purified

Catalog No. A80–125A Uniprot ID P02741

Lot No. 240606 GenelD 1401

**APPLICATIONS** WB, IHC, ICC, ELISA

**SPECIES REACTIVITY** Human

**AMOUNT** 1 ml

**CONCENTRATION** 1 mg/ml

**STORAGE/SHELF LIFE** 2 – 8°C / 2 years from date of receipt

**PHYSICAL STATE** Liquid

**BUFFER** Phosphate Buffered Saline (PBS) containing 0.09% Sodium Azide

**ISOTYPE** IgG

**ORIGIN** USA

**PRODUCTION PROCEDURES** Goats were immunized with purified human C–reactive Protein (CRP) of serum or plasma origin. Antiserum was solid phase adsorbed to ensure specificity. The antibody was isolated by affinity chromatography using antigen coupled to agarose beads.

Immunoglobulin concentration was determined using Beer’s Law where 1 mg/mL IgG has an A280 of 1.4.

By immunoelectrophoresis and ELISA this antibody reacts specifically with human C–Reactive Protein (CRP). This antibody may cross react with C–Reactive Protein (CRP) from other species.

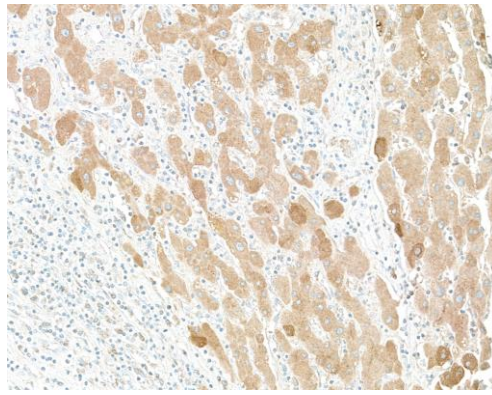
**APPLICATIONS** Centrifuge tube to remove product from lid. Optimal working dilutions should be determined experimentally by the investigator. Prepare working dilution immediately before use.

Western Blot	1:1000 – 1:30,000
Immunohistochemistry	1:200 – 1:2,000
Immunocytochemistry	1:200 – 1:2,000
ELISA	1:1000 – 1:30,000; for coating plates 1:100 – 1:500

**APPLICATION NOTES** Not all listed applications have been specifically tested by our laboratory.

**ADDITIONAL INFO** <https://www.fortislifecom/p/A80-125A>  
Use the link above to view SDS, a current list of citations, and other product specific information.

This document certifies that this product has met all of the quality control standards defined by Bethyl Laboratories, Inc.  
Michael Spencer, PhD Date: June 7, 2024



**Detection of human C-Reactive Protein by immunohistochemistry.** *Sample:* FFPE section of human liver. *Antibody:* Affinity purified goat anti-C-Reactive Protein (A80-125A). *Detection:* DAB