

# IL-10 Recombinant Monoclonal Antibody [BLR317M]

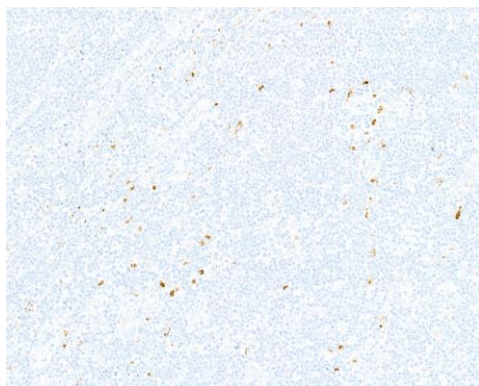
Rabbit Recombinant Monoclonal

Purified		RefSeq ID	NP_000563.1
Catalog No.	A700-317	Uniprot ID	P22301
Lot No.	1	GeneID	3586

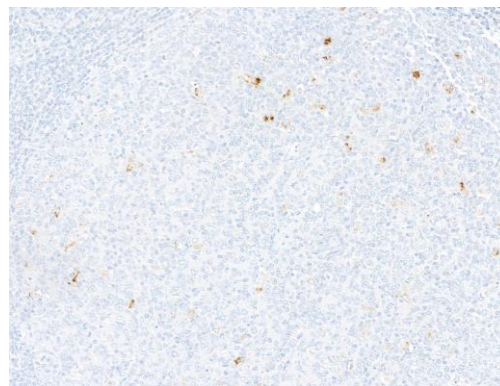
---

<b>APPLICATIONS</b>	WB, IP, IHC
<b>SPECIES REACTIVITY</b>	Human
<b>AMOUNT</b>	100 µl (50+ tests)
<b>CONCENTRATION</b>	1000 µg/ml
<b>STORAGE/SHELF LIFE</b>	2 - 8°C / 1 year from date of receipt
<b>PHYSICAL STATE</b>	Liquid
<b>BUFFER</b>	Phosphate Buffered Saline (PBS) with 0.09% Sodium Azide, BSA-Free
<b>ISOTYPE</b>	IgG
<b>CLONE #</b>	BLR317M
<b>ORIGIN</b>	USA
<b>PRODUCTION PROCEDURES</b>	Recombinant antibody was purified from cell culture supernatant.  Immunogen was a recombinant protein representing human IL-10 (residues 19-178, NP_000563.1).
<b>APPLICATIONS</b>	Centrifuge tube to remove product from lid. Optimal working dilutions should be determined experimentally by the investigator. Prepare working dilution immediately before use.  Western Blot                      1:1,000 Immunoprecipitation          6 µl/mg lysate Immunohistochemistry        1:100 to 1:500. Epitope retrieval with citrate buffer pH 6.0 is recommended for FFPE tissue sections.
<b>APPLICATION NOTES</b>	All western blot analysis is performed using 5% Milk-TBST for blocking and as antibody diluent. Primary antibody is incubated overnight.  Western blots of cell lysates are performed using Goat anti-Rabbit IgG Heavy and Light Chain Antibody (Cat. No. A120-101P).  Western blots of immunoprecipitates are performed using Goat anti-Rabbit Light Chain HRP Conjugate (Cat. No. A120-113P) with 5% Normal Pig Serum (Cat. No. S100-020) added to the blocking buffer.
<b>IHC HUMAN CONTROLS</b>	Appendix, Hodgkin Lymphoma, Lymph Node, Tonsil
<b>ADDITIONAL INFO</b>	<a href="https://www.fortislifescience.com/p/A700-317">https://www.fortislifescience.com/p/A700-317</a> Use the link above to view SDS, a current list of citations, and other product specific information.

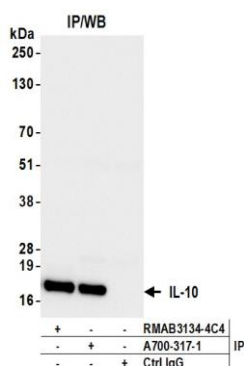
This document certifies that this product has met all of the quality control standards defined by Bethyl Laboratories, Inc.  
Michael Spencer, PhD Date: February 27, 2024



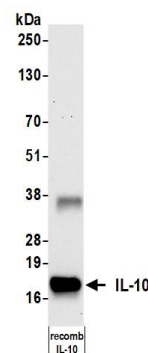
**Detection of human IL-10 by immunohistochemistry.**  
*Sample:* FFPE section of lymph node. *Antibody:* Rabbit anti-IL-10 recombinant monoclonal antibody [BLR317M] (A700-317). *Secondary:* HRP-conjugated goat anti-rabbit IgG (A120-501P).



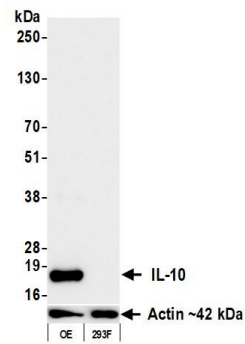
**Detection of human IL-10 by immunohistochemistry.**  
*Sample:* FFPE section of tonsil. *Antibody:* Rabbit anti-IL-10 recombinant monoclonal antibody [BLR317M] (A700-317). *Secondary:* HRP-conjugated goat anti-rabbit IgG (A120-501P).



**Detection of human IL-10 by western blot of immunoprecipitates.** *Samples:* Whole cell lysate (1.0 mg per IP reaction; 20% of IP loaded) from 293T cells overexpressing IL-10. *Antibodies:* Rabbit anti-IL-10 recombinant monoclonal antibody [BLR317M] (A700-317 lot 1) used for IP at 6 µl per reaction. IL-10 was also immunoprecipitated by a second antibody against a different epitope of IL-10 (RMAB3134-4C4). For blotting immunoprecipitated IL-10, A700-317 was used at 1:1000. *Detection:* Chemiluminescence with an exposure time of 3 seconds.



**Detection of human IL-10 by western blot.** *Samples:* 0.01ug of Recombinant IL-10 protein. *Antibody:* Rabbit anti-IL-10 recombinant monoclonal antibody [BLR317M] (A700-317 lot 1) used at 1:1000. *Secondary:* HRP-conjugated goat anti-rabbit IgG (A120-101P). *Detection:* Chemiluminescence with an exposure time of 3 seconds.



**Detection of human IL-10 by western blot.** *Samples:* Whole cell lysate (50 µg) from 293F cells and 293F cells overexpressing IL-10. *Antibody:* Rabbit anti-IL-10 recombinant monoclonal antibody [BLR317M] (A700-317 lot 1) used at 1:1000. *Secondary:* HRP-conjugated goat anti-rabbit IgG (A120-101P). *Detection:* Chemiluminescence with an exposure time of 3 seconds. Lower Panel: Rabbit anti-Actin recombinant monoclonal antibody [BLR057F] (A700-057).