

# EZH2 Recombinant Monoclonal Antibody [BLR311M]

Rabbit Recombinant Monoclonal

Purified		RefSeq ID	NP_004447.2
Catalog No.	A700-311	Uniprot ID	Q15910
Lot No.	1	GeneID	2146

---

<b>APPLICATIONS</b>	IHC
<b>SPECIES REACTIVITY</b>	Human, Mouse
<b>AMOUNT</b>	100 µl (50+ tests)
<b>CONCENTRATION</b>	1000 µg/ml
<b>STORAGE/SHELF LIFE</b>	2 – 8°C / 1 year from date of receipt
<b>PHYSICAL STATE</b>	Liquid
<b>BUFFER</b>	Phosphate Buffered Saline (PBS) with 0.09% Sodium Azide, BSA-Free
<b>ISOTYPE</b>	IgG
<b>CLONE #</b>	BLR311M
<b>ORIGIN</b>	USA
<b>PRODUCTION PROCEDURES</b>	Recombinant antibody was purified from cell culture supernatant.

Immunogen was a peptide representing a region between residue 701 and the C-terminus (residue 751) of human Histone-lysine N-methyltransferase EZH2 using the numbering given in entry NP\_004447.2 (Gene ID 2146).

**APPLICATIONS** Centrifuge tube to remove product from lid. Optimal working dilutions should be determined experimentally by the investigator. Prepare working dilution immediately before use.

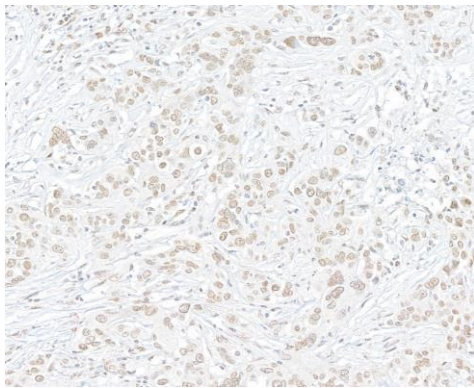
Immunohistochemistry 1:100 to 1:500. Epitope retrieval with citrate buffer pH 6.0 is recommended for FFPE tissue sections.

**IHC HUMAN CONTROLS** Breast Carcinoma, Colon Carcinoma, Prostate Carcinoma, Seminoma, Tonsil

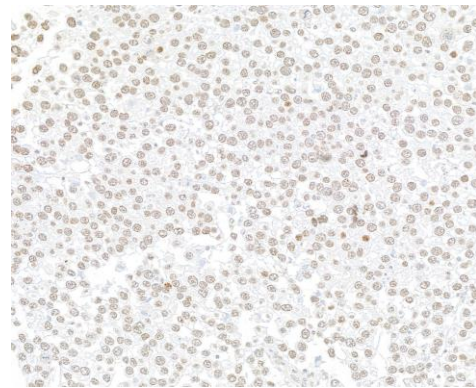
**ADDITIONAL INFO** <https://www.fortislife.com/p/A700-311>

Use the link above to view SDS, a current list of citations, and other product specific information.

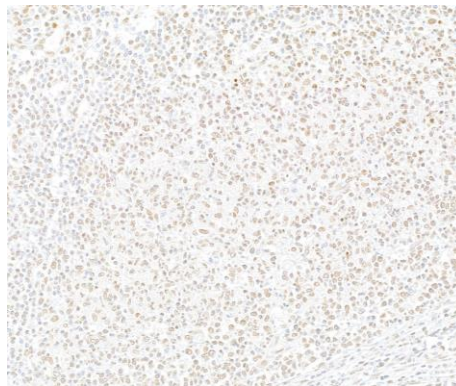
This document certifies that this product has met all of the quality control standards defined by Bethyl Laboratories, Inc.  
Michael Spencer, PhD Date: February 27, 2024



**Detection of human EZH2 by immunohistochemistry.**  
*Sample:* FFPE section of breast carcinoma. *Antibody:* Rabbit anti-EZH2 recombinant monoclonal antibody [BLR311M] (A700-311). *Secondary:* HRP-conjugated goat anti-rabbit IgG (A120-501P)



**Detection of human EZH2 by immunohistochemistry.**  
*Sample:* FFPE section of testicular seminoma. *Antibody:* Rabbit anti-EZH2 recombinant monoclonal antibody [BLR311M] (A700-311). *Secondary:* HRP-conjugated goat anti-rabbit IgG (A120-501P)



**Detection of human EZH2 by immunohistochemistry.**  
*Sample:* FFPE section of tonsil. *Antibody:* Rabbit anti-EZH2 recombinant monoclonal antibody [BLR311M] (A700-311). *Secondary:* HRP-conjugated goat anti-rabbit IgG (A120-501P)