

SRF Recombinant Monoclonal Antibody [BLR308M]

Rabbit Recombinant Monoclonal

Purified		RefSeq ID	NP_003122.1
Catalog No.	A700-308-T	Uniprot ID	P11831
Lot No.	1	GeneID	6722

APPLICATIONS	WB, IP, IHC, ICC, Flow Cyt
SPECIES REACTIVITY	Human
AMOUNT	10 µl (5+ tests)
CONCENTRATION	250 µg/ml
STORAGE/SHELF LIFE	2 – 8°C / 1 year from date of receipt
PHYSICAL STATE	Liquid
BUFFER	Phosphate Buffered Saline (PBS) with 0.1% BSA and 0.09% Sodium Azide
ISOTYPE	IgG
CLONE #	BLR308M
ORIGIN	USA
PRODUCTION PROCEDURES	Recombinant antibody was purified from cell culture supernatant.

Immunogen was a peptide representing a region between residue 25 and 75 of human Serum response factor using the numbering given in entry NP_003122.1 (Gene ID 6722).

APPLICATIONS	Centrifuge tube to remove product from lid. Optimal working dilutions should be determined experimentally by the investigator. Prepare working dilution immediately before use.
	Western Blot 1:1000
	Immunoprecipitation 20 µl/mg lysate
	Immunohistochemistry 1:100 to 1:500. Epitope retrieval with citrate buffer pH 6.0 is recommended for FFPE tissue sections.
	Immunocytochemistry 1:100 to 1:500. Epitope retrieval with citrate buffer pH 6.0 is recommended for FFPE cell sections.
	Flow Cytometry Fixed in 4% formaldehyde and permeabilized with 90% methanol. 0.5 µl per 1 x 10 ⁶ cells.

APPLICATION NOTES All western blot analysis is performed using 5% Milk-TBST for blocking and as antibody diluent. Primary antibody is incubated overnight.

Western blots of cell lysates are performed using Goat anti-Rabbit IgG Heavy and Light Chain Antibody (Cat. No. A120-101P).

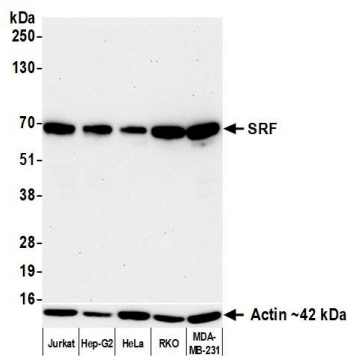
Western blots of immunoprecipitates are performed using Goat anti-Rabbit Light Chain HRP Conjugate (Cat. No. A120-113P) with 5% Normal Pig Serum (Cat. No. S100-020) added to the blocking buffer.

IHC HUMAN CONTROLS Breast Carcinoma, Colon Carcinoma, Placenta, Prostate Carcinoma, Tonsil, 786-O Cells, C5/MJ Cells, Hep-G2 Cells, MJ Cells, OVCAR-4 Cells

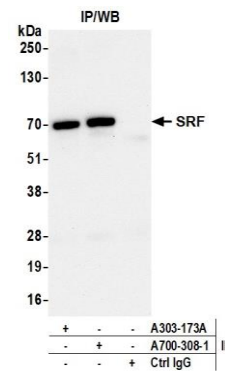
ADDITIONAL INFO <https://www.fortislife.com/p/A700-308-T>

Use the link above to view SDS, a current list of citations, and other product specific information.

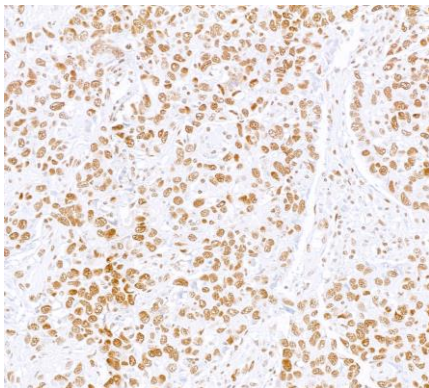
This document certifies that this product has met all of the quality control standards defined by Bethyl Laboratories, Inc.
Michael Spencer, PhD Date: December 26, 2023



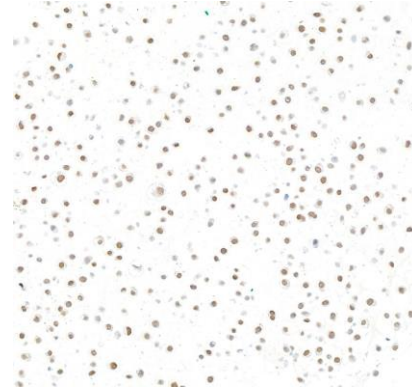
Detection of human SRF by western blot. *Samples:* Whole cell lysate (10 µg) from Jurkat, Hep-G2, HeLa, RKO, and MDA-MB-231 cells prepared using NETN lysis buffer. *Antibody:* Rabbit anti-SRF recombinant monoclonal antibody [BLR308M] (A700-308 lot 1) used at 1:1000. *Secondary:* HRP-conjugated goat anti-rabbit IgG (A120-101P). *Detection:* Chemiluminescence with an exposure time of 3 minutes. Lower Panel: Rabbit anti-Actin recombinant monoclonal antibody [BLR057F] (A700-057).



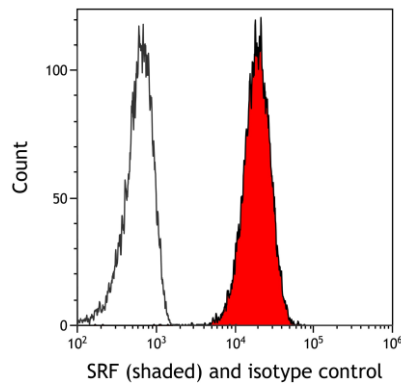
Detection of human SRF by western blot of immunoprecipitates. *Samples:* Whole cell lysate (1.0 mg per IP reaction; 20% of IP loaded) from HeLa cells prepared using NETN lysis buffer. *Antibodies:* Rabbit anti-SRF recombinant monoclonal antibody [BLR308M] (A700-308 lot 1) used for IP at 20 µl/mg lysate. SRF was also immunoprecipitated by a second antibody against a different epitope of SRF (A303-173A). For blotting immunoprecipitated SRF, A700-308 was used at 1:1000. *Detection:* Chemiluminescence with an exposure time of 30 seconds.



Detection of human SRF by immunohistochemistry. *Sample:* FFPE section of breast carcinoma. *Antibody:* Rabbit anti-SRF recombinant monoclonal antibody [BLR308M] (A700-308). *Secondary:* HRP-conjugated goat anti-rabbit IgG (A120-501P)



Detection of human SRF by immunocytochemistry. *Sample:* FFPE section of OVCA4-4 cells. *Antibody:* Rabbit anti-SRF recombinant monoclonal antibody [BLR308M] (A700-308). *Secondary:* HRP-conjugated goat anti-rabbit IgG (A120-501P)



Detection of human SRF (shaded) in A549 cells by flow cytometry. *Antibody:* Rabbit anti-SRF recombinant monoclonal antibody [BLR308M] (A700-308) or isotype control (unshaded). *Secondary:* DyLight® 650-conjugated goat anti-rabbit IgG (A120-101D5).