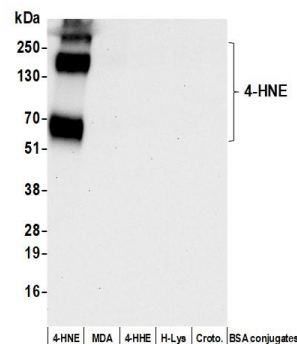


**Detection of 4-HNE by western blot.** *Samples:* Whole cell lysate (50  $\mu$ g) from Hep-G2 cells untreated (-) or treated with 100 $\mu$ M 4-HNE for 1 hr. *Antibody:* Rabbit anti-4-HNE recombinant monoclonal antibody [BLR303M] (A700-303 lot 1) used at 1:1000. *Secondary:* HRP-conjugated goat anti-rabbit IgG (A120-101P). *Detection:* Chemiluminescence with an exposure time of 30 seconds. Lower Panel: Rabbit anti-Actin recombinant monoclonal antibody [BLR057F] (A700-057).



**Detection of 4-HNE by western blot.** *Samples:* 1  $\mu$ g BSA conjugated to 4-HNE, Malondialdehyde (MDA), 4-Hydroxy-2-hexenal (4-HHE), Hexanoyl Lysine (H-Lys), and Crotonaldehyde (Croto). *Antibody:* Rabbit anti-4-HNE recombinant monoclonal antibody [BLR303M] (A700-303 lot 1) used at 1:1000. *Secondary:* HRP-conjugated goat anti-rabbit IgG (A120-101P). *Detection:* Chemiluminescence with an exposure time of 10 seconds.