

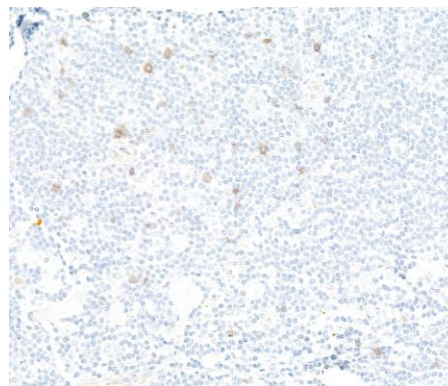
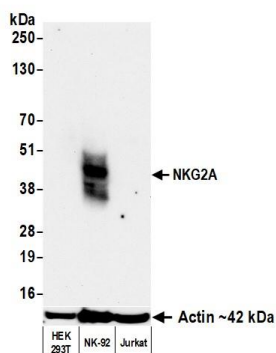
NKG2A Recombinant Monoclonal Antibody [BLR290L]

Rabbit Recombinant Monoclonal

Purified		RefSeq ID	NP_002250.2
Catalog No.	A700-290	Uniprot ID	P26715
Lot No.	1	GeneID	3821

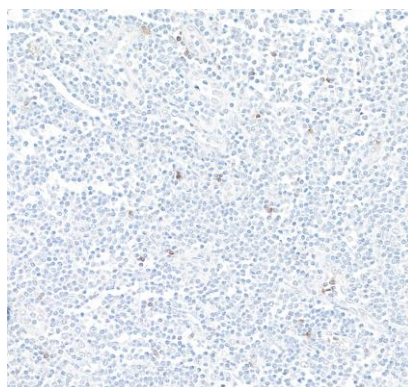
APPLICATIONS	WB, IHC
SPECIES REACTIVITY	Human
AMOUNT	100 µl (50+ tests)
CONCENTRATION	1000 µg/ml
STORAGE/SHELF LIFE	2 – 8°C / 1 year from date of receipt
PHYSICAL STATE	Liquid
BUFFER	Borate Buffered Saline (BBS) pH 8.2 with 0.09% Sodium Azide, BSA-Free
ISOTYPE	IgG
CLONE #	BLR290L
ORIGIN	USA
PRODUCTION PROCEDURES	Recombinant antibody was purified from cell culture supernatant. Immunogen was a peptide representing a region between residue 0 and 50 of human NKG2A using the numbering given in entry NP_002250.2 (Gene ID 3821).
APPLICATIONS	Centrifuge tube to remove product from lid. Optimal working dilutions should be determined experimentally by the investigator. Prepare working dilution immediately before use. Western Blot 1:1,000 Immunohistochemistry 1:100 to 1:500. Epitope retrieval with citrate buffer pH 6.0 is recommended for FFPE tissue sections.
IHC HUMAN CONTROLS	Hodgkin Lymphoma, Lymph Node, Spleen, Tonsil
ADDITIONAL INFO	https://www.fortislifecom.com/p/A700-290 Use the link above to view SDS, a current list of citations, and other product specific information.

This document certifies that this product has met all of the quality control standards defined by Bethyl Laboratories, Inc.
Michael Spencer, PhD Date: September 27, 2023



Detection of human NKG2A by western blot. *Samples:* Whole cell lysate (50 µg) from HEK293T, NK-92, and Jurkat cells prepared using NETN lysis buffer. *Antibody:* Rabbit anti-NKG2A recombinant monoclonal antibody [BLR290L] (A700-290 lot 1) used at 1:1000. *Secondary:* HRP-conjugated goat anti-rabbit IgG (A120-101P). *Detection:* Chemiluminescence with an exposure time of 30 seconds. Lower Panel: Rabbit anti-Actin recombinant monoclonal antibody [BLR057F] (A700-057).

Detection of human NKG2A by immunohistochemistry. *Sample:* FFPE section of Hodgkin Lymphoma. *Antibody:* Rabbit anti-NKG2A recombinant monoclonal antibody [BLR290L] (A700-290). *Secondary:* HRP-conjugated goat anti-rabbit IgG (A120-501P).



Detection of human NKG2A by immunohistochemistry. *Sample:* FFPE section of tonsil. *Antibody:* Rabbit anti-NKG2A recombinant monoclonal antibody [BLR290L] (A700-290). *Secondary:* HRP-conjugated goat anti-rabbit IgG (A120-501P).