

RAF1 /c-Raf Recombinant Monoclonal Antibody [BLR289L]

Rabbit Recombinant Monoclonal

Purified		RefSeq ID	NP_002871.1
Catalog No.	A700-289	Uniprot ID	P04049
Lot No.	1	GeneID	5894

APPLICATIONS WB, IP, Flow Cyt

SPECIES REACTIVITY Human, Mouse

AMOUNT 100 µl (50+ tests)

CONCENTRATION 1000 µg/ml

STORAGE/SHELF LIFE 2 – 8°C / 1 year from date of receipt

PHYSICAL STATE Liquid

BUFFER Borate Buffered Saline (BBS) pH 8.2 with 0.09% Sodium Azide, BSA-Free

ISOTYPE IgG

CLONE # BLR289L

ORIGIN USA

PRODUCTION PROCEDURES Recombinant antibody was purified from cell culture supernatant.

Immunogen was a peptide representing a region between residue 300 and 350 of human RAF proto-oncogene serine/threonine-protein kinase using the numbering given in entry NP_002871.1 (Gene ID 5894).

APPLICATIONS Centrifuge tube to remove product from lid. Optimal working dilutions should be determined experimentally by the investigator. Prepare working dilution immediately before use.

Western Blot 1:1,000

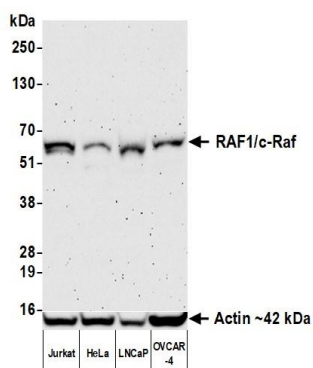
Immunoprecipitation 6 µl/1 mg lysate

Flow Cytometry Fixed in 4% formaldehyde and permeabilized with 90% methanol. 1 µl per 1×10^6 cells.

ADDITIONAL INFO <https://www.fortislife.com/p/A700-289>

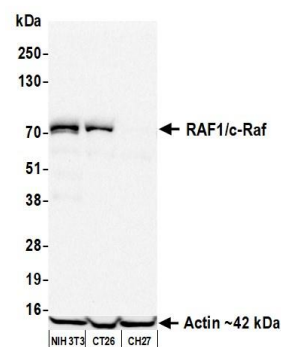
Use the link above to view SDS, a current list of citations, and other product specific information.

This document certifies that this product has met all of the quality control standards defined by Bethyl Laboratories, Inc.
Michael Spencer, PhD Date: October 31, 2023



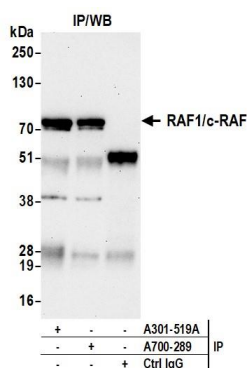
Detection of human RAF1 /c-Raf by western blot.

Samples: Whole cell lysate (50 µg) from Jurkat, HeLa, LNCaP, and OVCAR-4 cells prepared using NETN lysis buffer. *Antibody:* Rabbit anti-RAF1 /c-Raf recombinant monoclonal antibody [BLR289L] (A700-289 lot 1) used at 1:1000. *Secondary:* HRP-conjugated goat anti-rabbit IgG (A120-101P). *Detection:* Chemiluminescence with an exposure time of 3 minutes. Lower Panel: Rabbit anti-Actin recombinant monoclonal antibody [BLR057F] (A700-057).



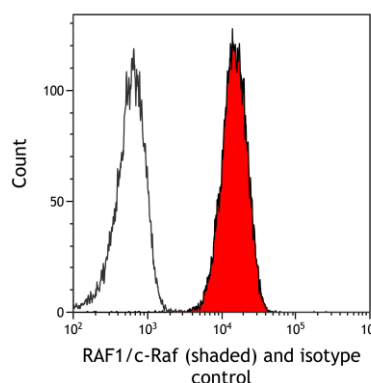
Detection of mouse RAF1 /c-Raf by western blot.

Samples: Whole cell lysate (50 µg) from NIH 3T3, CT26, and CH27 cells prepared using NETN lysis buffer. *Antibody:* Rabbit anti-RAF1 /c-Raf recombinant monoclonal antibody [BLR289L] (A700-289 lot 1) used at 1:1000. *Secondary:* HRP-conjugated goat anti-rabbit IgG (A120-101P). *Detection:* Chemiluminescence with an exposure time of 30 seconds. Lower Panel: Rabbit anti-Actin recombinant monoclonal antibody [BLR057F] (A700-057).



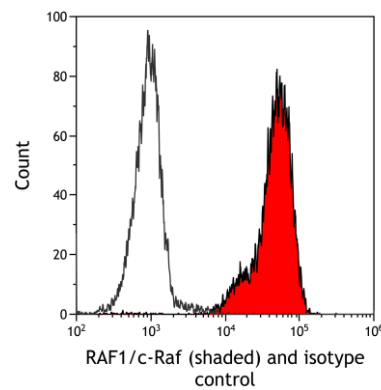
Detection of human RAF1 /c-Raf by western blot of immunoprecipitates.

Samples: Whole cell lysate (1.0 mg per IP reaction; 20% of IP loaded) from Jurkat cells prepared using NETN lysis buffer. *Antibodies:* Rabbit anti-RAF1 /c-Raf recombinant monoclonal antibody [BLR289L] (A700-289 lot 1) used for IP at 6 µl/mg lysate. RAF1 /c-Raf was also immunoprecipitated by a second antibody against a different epitope of RAF1 /c-Raf (A301-519A). For blotting immunoprecipitated RAF1 /c-Raf, A700-289 was used at 1:1000. *Detection:* Chemiluminescence with an exposure time of 30 seconds.



Detection of human RAF1 /c-Raf (shaded) in Jurkat cells by flow cytometry.

Antibody: Rabbit anti-RAF1 /c-Raf recombinant monoclonal antibody [BLR289L] (A700-289) or isotype control (unshaded). *Secondary:* DyLight® 650-conjugated goat anti-rabbit IgG (A120-101D5).



Detection of mouse RAF1/c-Raf (shaded) in EL4 cells by flow cytometry. *Antibody:* Rabbit anti-RAF1/c-Raf recombinant monoclonal antibody [BLR289L] (A700-289) or isotype control (unshaded). *Secondary:* DyLight® 650-conjugated goat anti-rabbit IgG (A120-101D5).