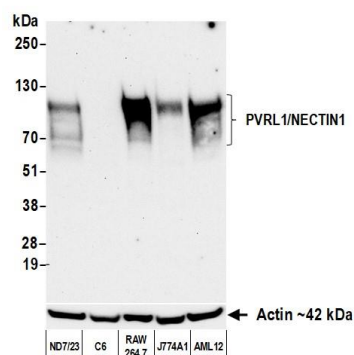


Detection of human PVRL1/NECTIN1 by western blot.

Samples: Whole cell lysate (10 µg) from MCF-10A, SNB-75, HaCaT, MCF-7, and RT-4 cells prepared using NETN lysis buffer. *Antibody:* Rabbit anti-PVRL1/NECTIN1 recombinant monoclonal antibody [BLR284L] (A700-284 lot 1) used at 1:1000. *Secondary:* HRP-conjugated goat anti-rabbit IgG (A120-101P). *Detection:* Chemiluminescence with an exposure time of 10 seconds. Lower Panel: Rabbit anti-Actin recombinant monoclonal antibody [BLR057F] (A700-057).



Detection of mouse PVRL1/NECTIN1 by western blot.

Samples: Whole cell lysate (50 µg) from ND7/23, C6, RAW 264.7, J774A1, and AML12 cells prepared using NETN lysis buffer. *Antibody:* Rabbit anti-PVRL1/NECTIN1 recombinant monoclonal antibody [BLR284L] (A700-284 lot 1) used at 1:1000. *Secondary:* HRP-conjugated goat anti-rabbit IgG (A120-101P). *Detection:* Chemiluminescence with an exposure time of 75 seconds. Lower Panel: Rabbit anti-Actin recombinant monoclonal antibody [BLR057F] (A700-057).