

Troponin I Recombinant Monoclonal Antibody [BLR280L]

Rabbit Recombinant Monoclonal

| | | | |
|-------------|----------|------------|-------------|
| Purified | | RefSeq ID | NP_000354.4 |
| Catalog No. | A700-280 | Uniprot ID | P19429 |
| Lot No. | 1 | GeneID | 7137 |

| | |
|------------------------------|--|
| APPLICATIONS | WB, IHC |
| SPECIES REACTIVITY | Human, Mouse |
| AMOUNT | 100 µl (50+ tests) |
| CONCENTRATION | 250 µg/ml |
| STORAGE/SHELF LIFE | 2 - 8°C / 1 year from date of receipt |
| PHYSICAL STATE | Liquid |
| BUFFER | Borate Buffered Saline (BBS) pH 8.2 with 0.1% BSA and 0.09% Sodium Azide |
| ISOTYPE | IgG |
| CLONE # | BLR280L |
| ORIGIN | USA |
| PRODUCTION PROCEDURES | Recombinant antibody was purified from cell culture supernatant. |

Immunogen was a peptide representing a region between residue 0 and 50 of human Troponin I (cardiac muscle) using the numbering given in entry NP_000354.4 (Gene ID 7137).

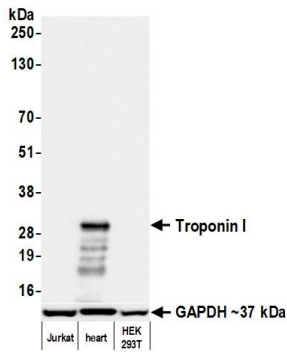
| | |
|---------------------|---|
| APPLICATIONS | Centrifuge tube to remove product from lid. Optimal working dilutions should be determined experimentally by the investigator. Prepare working dilution immediately before use. |
| | Western Blot 1:1,000 |
| | Immunohistochemistry 1:100 to 1:500. Epitope retrieval with citrate buffer pH 6.0 is recommended for FFPE tissue sections. |

| | |
|---------------------------|----------------|
| IHC HUMAN CONTROLS | Cardiac Muscle |
|---------------------------|----------------|

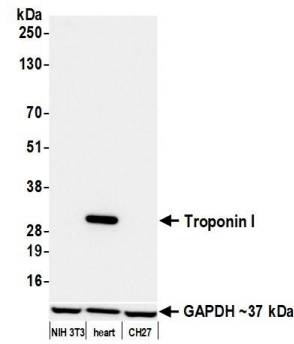
| | |
|---------------------------|----------------|
| IHC MOUSE CONTROLS | Cardiac Muscle |
|---------------------------|----------------|

| | |
|------------------------|---|
| ADDITIONAL INFO | https://www.fortislife.com/p/A700-280 Use the link above to view SDS, a current list of citations, and other product specific information. |
|------------------------|---|

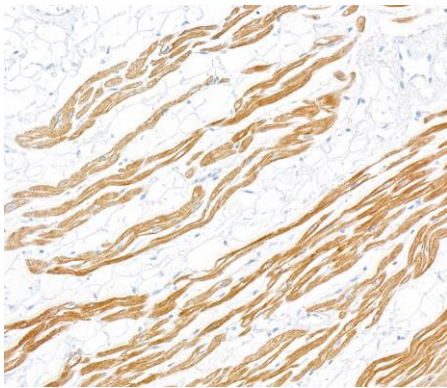
This document certifies that this product has met all of the quality control standards defined by Bethyl Laboratories, Inc.
Michael Spencer, PhD Date: September 27, 2023



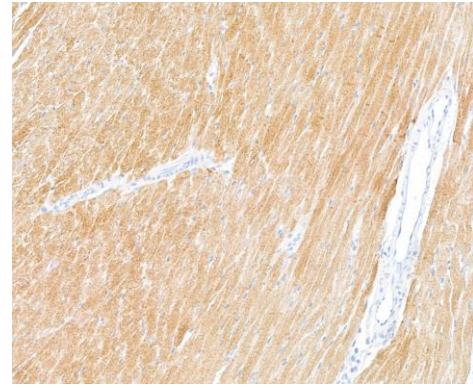
Detection of human Troponin I by western blot. *Samples:* Whole cell lysate (50 μ g) from Jurkat, heart, and HEK293T cells prepared using NETN lysis buffer. *Antibody:* Rabbit anti-Troponin I recombinant monoclonal antibody [BLR280L] (A700-280 lot 1) used at 1:1000. *Secondary:* HRP-conjugated goat anti-rabbit IgG (A120-101P). *Detection:* Chemiluminescence with an exposure time of 3 seconds. Lower Panel: Rabbit anti-GAPDH antibody (A300-639A).



Detection of mouse Troponin I by western blot. *Samples:* Whole cell lysate (50 μ g) from NIH 3T3, heart, and CH27 cells prepared using NETN lysis buffer. *Antibody:* Rabbit anti-Troponin I recombinant monoclonal antibody [BLR280L] (A700-280 lot 1) used at 1:1000. *Secondary:* HRP-conjugated goat anti-rabbit IgG (A120-101P). *Detection:* Chemiluminescence with an exposure time of 3 seconds. Lower Panel: Rabbit anti-GAPDH antibody (A300-639A).



Detection of human Troponin I by immunohistochemistry. *Sample:* FFPE section of human cardiac muscle. *Antibody:* Rabbit anti-Troponin I recombinant monoclonal antibody [BLR280L] (A700-280). *Secondary:* HRP-conjugated goat anti-rabbit IgG (A120-501P).



Detection of mouse Troponin I by immunohistochemistry. *Sample:* FFPE section of mouse cardiac muscle. *Antibody:* Rabbit anti-Troponin I recombinant monoclonal antibody [BLR280L] (A700-280). *Secondary:* HRP-conjugated goat anti-rabbit IgG (A120-501P).