

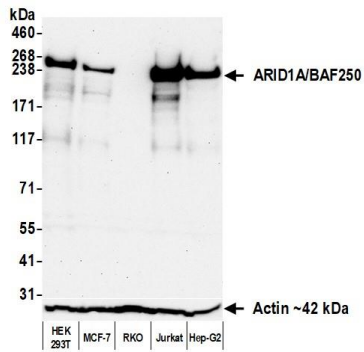
ARID1A/BAF250 Recombinant Monoclonal Antibody [BLR279L]

Rabbit Recombinant Monoclonal

Purified		RefSeq ID	NP_006006.3
Catalog No.	A700-279	Uniprot ID	O14497
Lot No.	1	GeneID	8289

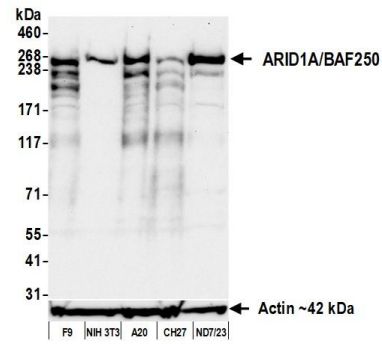
APPLICATIONS	WB, IP, IHC, ICC, Flow Cyt
SPECIES REACTIVITY	Human, Mouse
AMOUNT	100 µl (50+ tests)
CONCENTRATION	50 µg/ml
STORAGE/SHELF LIFE	2 – 8°C / 1 year from date of receipt
PHYSICAL STATE	Liquid
BUFFER	Borate Buffered Saline (BBS) pH 8.2 with 0.1% BSA and 0.09% Sodium Azide
ISOTYPE	IgG
CLONE #	BLR279L
ORIGIN	USA
PRODUCTION PROCEDURES	Recombinant antibody was purified from cell culture supernatant. Immunogen was a peptide representing a region between residue 750 and 800 of human AT-rich interactive domain-containing protein 1A using the numbering given in entry NP_006006.3 (Gene ID 8289).
APPLICATIONS	Centrifuge tube to remove product from lid. Optimal working dilutions should be determined experimentally by the investigator. Prepare working dilution immediately before use. Western Blot 1:1,000 Immunoprecipitation 20 µl/1 mg lysate Immunohistochemistry 1:100 to 1:500. Epitope retrieval with citrate buffer pH 6.0 is recommended for FFPE tissue sections. Immunocytochemistry 1:100 to 1:500. Epitope retrieval with citrate buffer pH 6.0 is recommended for FFPE cell sections. Flow Cytometry Fixed in 4% formaldehyde and permeabilized with 90% methanol. 1 µl per 1 × 10 ⁶ cells.
IHC HUMAN CONTROLS	Breast Carcinoma, Colon Carcinoma, Lung Carcinoma, Ovarian Carcinoma, Prostate Carcinoma, Tonsil, DLD-1 Cells, HL-60 Cells, OVCAR-8 Cells
IHC MOUSE CONTROLS	Plasmacytoma, Spleen, CT26 cells, mIMCD-3 Cells
ADDITIONAL INFO	https://www.fortislifesciences.com/p/A700-279 Use the link above to view SDS, a current list of citations, and other product specific information.

This document certifies that this product has met all of the quality control standards defined by Bethyl Laboratories, Inc.
Michael Spencer, PhD Date: September 27, 2023



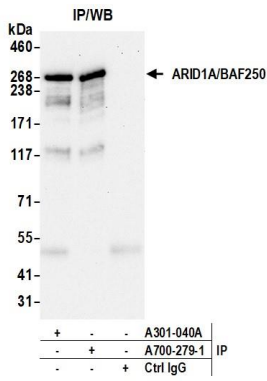
Detection of human ARID1A/BAF250 by western blot.

Samples: Whole cell lysate (50 µg) from HEK293T, MCF-7, RKO, Jurkat, and Hep-G2 cells prepared using NETN lysis buffer. *Antibody:* Rabbit anti-ARID1A/BAF250 recombinant monoclonal antibody [BLR279L] (A700-279 lot 1) used at 1:1000. *Secondary:* HRP-conjugated goat anti-rabbit IgG (A120-101P). *Detection:* Chemiluminescence with an exposure time of 75 seconds. Lower Panel: Rabbit anti-Actin recombinant monoclonal antibody [BLR057F] (A700-057).

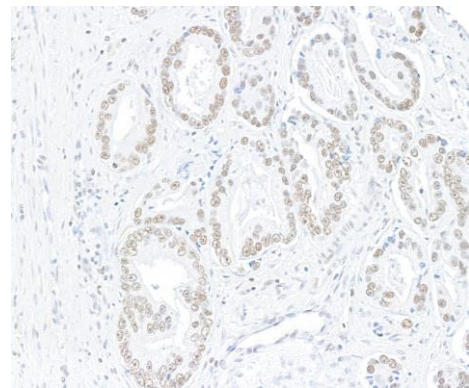


Detection of mouse ARID1A/BAF250 by western blot.

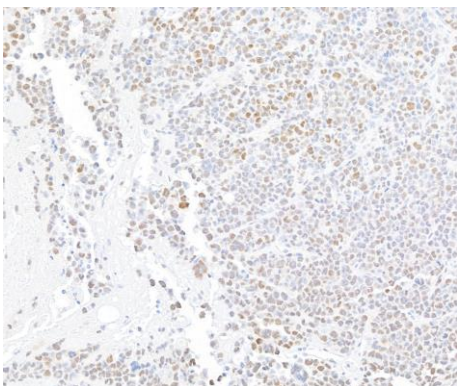
Samples: Whole cell lysate (50 µg) from F9, NIH 3T3, A20, CH27, and ND7/23 cells prepared using NETN lysis buffer. *Antibody:* Rabbit anti-ARID1A/BAF250 recombinant monoclonal antibody [BLR279L] (A700-279 lot 1) used at 1:1000. *Secondary:* HRP-conjugated goat anti-rabbit IgG (A120-101P). *Detection:* Chemiluminescence with an exposure time of 30 seconds. Lower Panel: Rabbit anti-Actin recombinant monoclonal antibody [BLR057F] (A700-057).



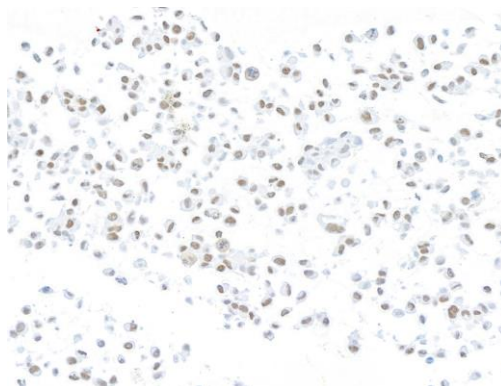
Detection of human ARID1A/BAF250 by western blot of immunoprecipitates. *Samples:* Whole cell lysate (1 mg per IP; 10% of IP loaded) from 293T cells prepared using NETN lysis buffer. *Antibodies:* Rabbit anti-ARID1A/BAF250 recombinant monoclonal antibody [BLR279L] (A700-279 lot 1) used for IP at 20 µl/mg lysate. ARID1A/BAF250 was also immunoprecipitated by a second antibody against a different epitope of ARID1A/BAF250 (A301-040A). For blotting immunoprecipitated ARID1A/BAF250, A700-279 was used at 1:1000. *Detection:* Chemiluminescence with an exposure time of 75 seconds.



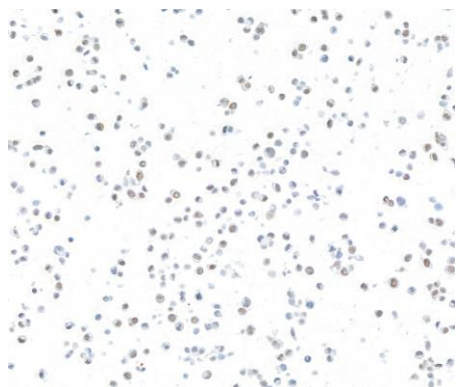
Detection of human ARID1A/BAF250 by immunohistochemistry. *Sample:* FFPE section of prostate carcinoma. *Antibody:* Rabbit anti-ARID1A recombinant monoclonal antibody [BLR279L] (A700-279). *Secondary:* HRP-conjugated goat anti-rabbit IgG (A120-501P).



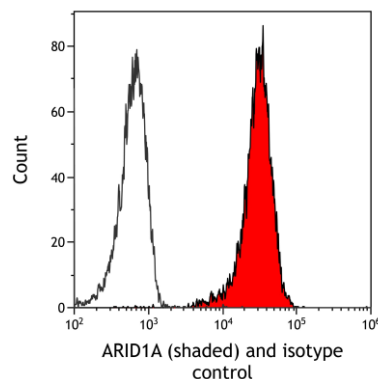
Detection of mouse ARID1A/BAF250 by immunohistochemistry. *Sample:* FFPE section of mouse plasmacytoma. *Antibody:* Rabbit anti-ARID1A recombinant monoclonal antibody [BLR279L] (A700-279). *Secondary:* HRP-conjugated goat anti-rabbit IgG (A120-501P).



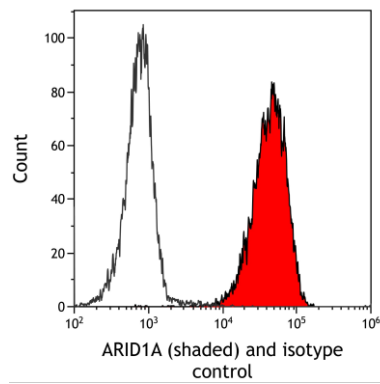
Detection of human ARID1A/BAF250 by immunocytochemistry. *Sample:* FFPE section of OVCAR-8 cells. *Antibody:* Rabbit anti-ARID1A recombinant monoclonal antibody [BLR279L] (A700-279). *Secondary:* HRP-conjugated goat anti-rabbit IgG (A120-501P).



Detection of mouse ARID1A/BAF250 by immunocytochemistry. *Sample:* FFPE section of mouse m1MCD-3 cells. *Antibody:* Rabbit anti-ARID1A recombinant monoclonal antibody [BLR279L] (A700-279). *Secondary:* HRP-conjugated goat anti-rabbit IgG (A120-501P).



Detection of human ARID1A/BAF250 (shaded) in HT-29 cells by flow cytometry. *Antibody:* Rabbit anti-ARID1A recombinant monoclonal antibody [BLR279L] (A700-279) or isotype control (unshaded). *Secondary:* DyLight® 650-conjugated goat anti-rabbit IgG (A120-101D5).



Detection of mouse ARID1A/BAF250 (shaded) in EL4 cells by flow cytometry. *Antibody:* Rabbit anti- ARID1A recombinant monoclonal antibody [BLR279L] (A700-279) or isotype control (unshaded). *Secondary:* DyLight® 650-conjugated goat anti-rabbit IgG (A120-101D5).