

# SIGLEC-15 Recombinant Monoclonal Antibody [BLR276L]

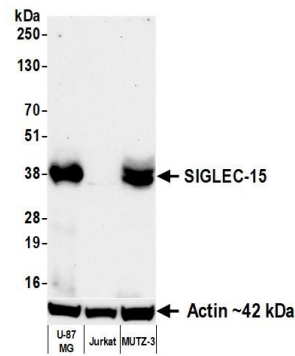
Rabbit Recombinant Monoclonal

Purified		RefSeq ID	NP_998767.1
Catalog No.	A700-276	Uniprot ID	Q6ZMC9
Lot No.	1	GeneID	284266

---

<b>APPLICATIONS</b>	WB
<b>SPECIES REACTIVITY</b>	Human
<b>AMOUNT</b>	100 µl (10 blots)
<b>CONCENTRATION</b>	1000 µg/ml
<b>STORAGE/SHELF LIFE</b>	2 – 8°C / 1 year from date of receipt
<b>PHYSICAL STATE</b>	Liquid
<b>BUFFER</b>	Borate Buffered Saline (BBS) pH 8.2 with 0.09% Sodium Azide, BSA-Free
<b>ISOTYPE</b>	IgG
<b>CLONE #</b>	BLR276L
<b>ORIGIN</b>	USA
<b>PRODUCTION PROCEDURES</b>	Recombinant antibody was purified from cell culture supernatant.  Immunogen was a peptide representing a region between residue 216 and 319 of human Sialic acid-binding Ig-like lectin 15 using the numbering given in entry NP_998767.1 (Gene ID 284266).
<b>APPLICATIONS</b>	Centrifuge tube to remove product from lid. Optimal working dilutions should be determined experimentally by the investigator. Prepare working dilution immediately before use.  Western Blot                      1:1000
<b>APPLICATION NOTES</b>	All western blot analysis is performed using 5% Milk-TBST for blocking and as antibody diluent. Primary antibody is incubated overnight.  Western blots of cell lysates are performed using Goat anti-Rabbit IgG Heavy and Light Chain Antibody (A120-101P).
<b>ADDITIONAL INFO</b>	<a href="https://www.fortislife.com/p/A700-276">https://www.fortislife.com/p/A700-276</a> Use the link above to view SDS, a current list of citations, and other product specific information.

This document certifies that this product has met all of the quality control standards defined by Bethyl Laboratories, Inc.  
Michael Spencer, PhD Date: April 19, 2024



**Detection of human SIGLEC-15 by western blot.** *Samples:* Whole cell lysate (50 µg) from U-87 MG, Jurkat, and MUTZ-3 cells prepared using NETN lysis buffer. *Antibody:* Rabbit anti-SIGLEC-15 recombinant monoclonal antibody [BLR276L] (A700-276 lot 1) used at 1:1000. *Secondary:* HRP-conjugated goat anti-rabbit IgG (A120-101P). *Detection:* Chemiluminescence with an exposure time of 75 seconds. Lower Panel: Rabbit anti-Actin recombinant monoclonal antibody [BLR057F] (A700-057).