

# CD48 Recombinant Monoclonal Antibody [BLR275L]

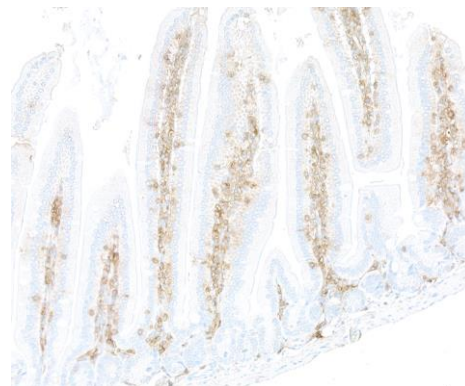
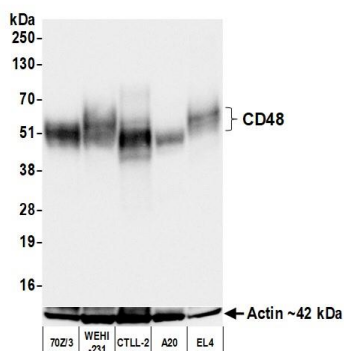
Rabbit Recombinant Monoclonal

Purified		RefSeq ID	NP_031675.1
Catalog No.	A700-275	Uniprot ID	P18181
Lot No.	1	GenID	12506

---

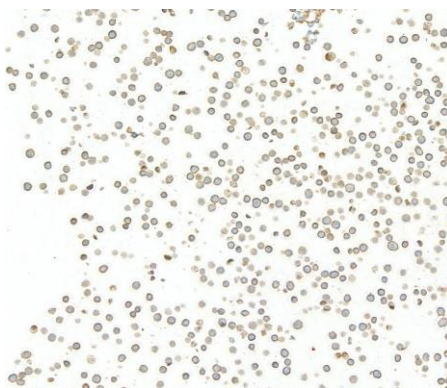
<b>APPLICATIONS</b>	WB, IHC, ICC
<b>SPECIES REACTIVITY</b>	Mouse
<b>AMOUNT</b>	100 µl (50+ tests)
<b>CONCENTRATION</b>	250 µg/ml
<b>STORAGE/SHELF LIFE</b>	2 – 8°C / 1 year from date of receipt
<b>PHYSICAL STATE</b>	Liquid
<b>BUFFER</b>	Borate Buffered Saline (BBS) pH 8.2 with 0.1% BSA and 0.09% Sodium Azide
<b>ISOTYPE</b>	IgG
<b>CLONE #</b>	BLR275L
<b>ORIGIN</b>	USA
<b>PRODUCTION PROCEDURES</b>	Recombinant antibody was purified from cell culture supernatant.  Immunogen was a recombinant protein representing the extracellular domain of mouse CD48 (residues 23–216, NP_031675.1).
<b>APPLICATIONS</b>	Centrifuge tube to remove product from lid. Optimal working dilutions should be determined experimentally by the investigator. Prepare working dilution immediately before use.  Western Blot                      1:1,000 Immunohistochemistry      1:100 to 1:500. Epitope retrieval with citrate buffer pH 6.0 is recommended for FFPE tissue sections. Immunocytochemistry      1:100 to 1:500. Epitope retrieval with citrate buffer pH 6.0 is recommended for FFPE cell sections.
<b>IHC MOUSE CONTROLS</b>	Bone Marrow, Gut, Spleen, Ba/F3 Cells, WEHI-231 Cells
<b>ADDITIONAL INFO</b>	<a href="https://www.fortislifecom/p/A700-275">https://www.fortislifecom/p/A700-275</a> Use the link above to view SDS, a current list of citations, and other product specific information.

This document certifies that this product has met all of the quality control standards defined by Bethyl Laboratories, Inc.  
Michael Spencer, PhD Date: June 30, 2023



**Detection of mouse CD48 by western blot.** *Samples:* Whole cell lysate (25  $\mu$ g) from 70Z/3, WEHI-231, CTLL-2, A20, and EL4 cells prepared using NETN lysis buffer. *Antibody:* Rabbit anti-CD48 recombinant monoclonal antibody [BLR275L] (A700-275 lot 1) used at 1:1000. *Secondary:* HRP-conjugated goat anti-rabbit IgG (A120-101P). *Detection:* Chemiluminescence with an exposure time of 3 seconds. Lower Panel: Rabbit anti-Actin recombinant monoclonal antibody [BLR057F] (A700-057).

**Detection of mouse CD48 by immunohistochemistry.** *Sample:* FFPE section of mouse gut. *Antibody:* Rabbit anti-CD48 recombinant monoclonal antibody [BLR275L] (A700-275). *Secondary:* HRP-conjugated goat anti-rabbit IgG (A120-501P).



**Detection of mouse CD48 by immunocytochemistry.** *Sample:* FFPE section of WEHI-231 cells. *Antibody:* Rabbit anti-CD48 recombinant monoclonal antibody [BLR275L] (A700-275). *Secondary:* HRP-conjugated goat anti-rabbit IgG (A120-501P).