

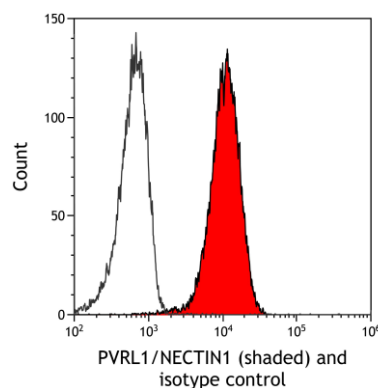


Detection of human PVRL1/NECTIN1 by western blot.

Samples: Whole cell lysate (50 µg) from MCF-10A, SNB-75, RT-4, MCF-7, and HaCaT cells prepared using NETN lysis buffer. **Antibody:** Rabbit anti-PVRL1/NECTIN1 recombinant monoclonal antibody [BLR274L] (A700-274 lot 1) used at 1:1000. **Secondary:** HRP-conjugated goat anti-rabbit IgG (A120-101P). **Detection:** Chemiluminescence with an exposure time of 30 seconds. Lower Panel: Rabbit anti-Actin recombinant monoclonal antibody [BLR057F] (A700-057).

Detection of human PVRL1/NECTIN1 by western blot of immunoprecipitates.

Samples: Whole cell lysate (1.0 mg per IP reaction; 20% of IP loaded) from MCF-10A cells prepared using NETN lysis buffer. **Antibodies:** Rabbit anti-PVRL1/NECTIN1 recombinant monoclonal antibody [BLR274L] (A700-274 lot 1) used for IP at 6 µl/mg lysate. PVRL1/NECTIN1 was also immunoprecipitated by a second antibody against a different epitope of PVRL1/NECTIN1 (BL20344). For blotting immunoprecipitated PVRL1/NECTIN1, A700-274 was used at 1:1000. **Detection:** Chemiluminescence with an exposure time of 75 seconds.



Detection of human PVRL1/NECTIN1 (shaded) in FaDu cells by flow cytometry.

Antibody: Rabbit anti-PVRL1/NECTIN1 recombinant monoclonal antibody [BLR274L] (A700-274) or isotype control (unshaded). **Secondary:** DyLight® 650-conjugated goat anti-rabbit IgG (A120-101D5).