

CD70 Recombinant Monoclonal Antibody [BLR266L]

Rabbit Recombinant Monoclonal

Purified		RefSeq ID	NP_001243.1
Catalog No.	A700-266	Uniprot ID	P32970
Lot No.	1	GeneID	970

APPLICATIONS	WB, IHC, ICC
SPECIES REACTIVITY	Human
AMOUNT	100 µl (50+ tests)
CONCENTRATION	500 µg/ml
STORAGE/SHELF LIFE	2 – 8°C / 1 year from date of receipt
PHYSICAL STATE	Liquid
BUFFER	Borate Buffered Saline (BBS) pH 8.2 with 0.1% BSA and 0.09% Sodium Azide
ISOTYPE	IgG
CLONE #	BLR266L
ORIGIN	USA
PRODUCTION PROCEDURES	Recombinant antibody was purified from cell culture supernatant.

Immunogen was a recombinant protein representing the extracellular domain of human CD70 (residues 50–193, NP_001243.1).

APPLICATIONS Centrifuge tube to remove product from lid. Optimal working dilutions should be determined experimentally by the investigator. Prepare working dilution immediately before use.

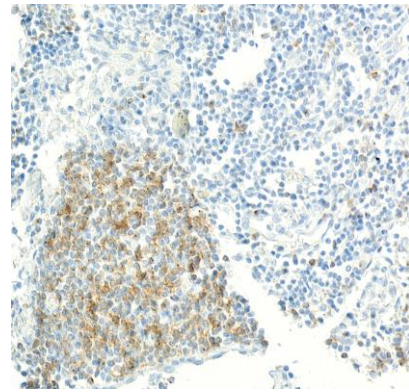
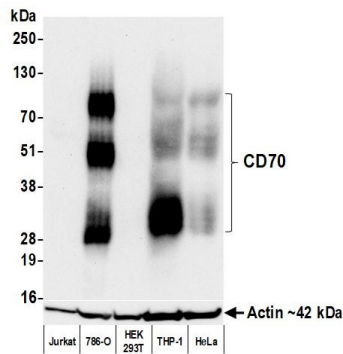
Western Blot	1:1,000
Immunohistochemistry	1:100 to 1:500. Epitope retrieval with citrate buffer pH 6.0 is recommended for FFPE tissue sections.
Immunocytochemistry	1:100 to 1:500. Epitope retrieval with citrate buffer pH 6.0 is recommended for FFPE cell sections.

IHC HUMAN CONTROLS Kidney Clear Cell Carcinoma, Liver Squamous Cell Carcinoma, Metastatic Lymph Node, Testicular Seminoma, Tonsil, 786-O Cells, C5/MJ Cells, HH Cells, MJ Cells, Raji Cells, VLN3G2 Cells

ADDITIONAL INFO <https://www.fortislifecom.com/p/A700-266>

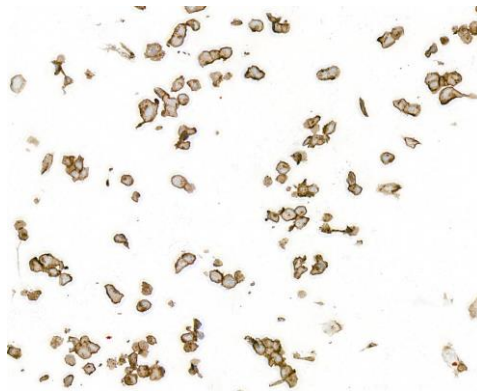
Use the link above to view SDS, a current list of citations, and other product specific information.

This document certifies that this product has met all of the quality control standards defined by Bethyl Laboratories, Inc.
Michael Spencer, PhD Date: June 29, 2023



Detection of human CD70 by western blot. *Samples:* Whole cell lysate (50 μ g) from Jurkat, 786-O (10 μ g), HEK293T, THP-1, and HeLa cells prepared using NETN lysis buffer. *Antibody:* Rabbit anti-CD70 recombinant monoclonal antibody [BLR266L] (A700-266 lot 1) used at 1:1000. *Secondary:* HRP-conjugated goat anti-rabbit IgG (A120-101P). *Detection:* Chemiluminescence with an exposure time of 30 seconds. Lower Panel: Rabbit anti-Actin recombinant monoclonal antibody [BLR057F] (A700-057).

Detection of human CD70 by immunohistochemistry. *Sample:* FFPE section of human lymph node with metastatic lung cancer. *Antibody:* Rabbit anti-CD70 recombinant monoclonal antibody [BLR266L] (A700-266). *Secondary:* HRP-conjugated goat anti-rabbit IgG (A120-501P).



Detection of human CD70 by immunocytochemistry. *Sample:* FFPE section of 786-O cells. *Antibody:* Rabbit anti-CD70 recombinant monoclonal antibody [BLR266L] (A700-266). *Secondary:* HRP-conjugated goat anti-rabbit IgG (A120-501P).