

# LOX-1 Recombinant Monoclonal Antibody [BLR262L]

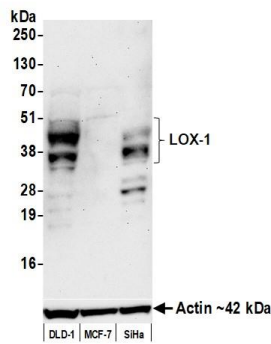
Rabbit Recombinant Monoclonal

Purified		RefSeq ID	NP_002534.1
Catalog No.	A700-262	Uniprot ID	P78380
Lot No.	1	GeneID	4973

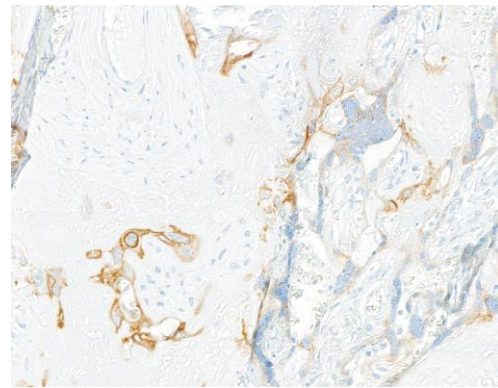
---

<b>APPLICATIONS</b>	WB, IHC, ICC
<b>SPECIES REACTIVITY</b>	Human
<b>AMOUNT</b>	100 µl (50+ tests)
<b>CONCENTRATION</b>	1000 µg/ml
<b>STORAGE/SHELF LIFE</b>	2 - 8°C / 1 year from date of receipt
<b>PHYSICAL STATE</b>	Liquid
<b>BUFFER</b>	Borate Buffered Saline (BBS) pH 8.2 with 0.09% Sodium Azide, BSA-Free
<b>ISOTYPE</b>	IgG
<b>CLONE #</b>	BLR262L
<b>ORIGIN</b>	USA
<b>PRODUCTION PROCEDURES</b>	Recombinant antibody was purified from cell culture supernatant.  Immunogen was a recombinant protein representing the extracellular domain of human LOX-1 (residues 61-273, NP_002534.1).
<b>APPLICATIONS</b>	Centrifuge tube to remove product from lid. Optimal working dilutions should be determined experimentally by the investigator. Prepare working dilution immediately before use.  Western Blot 1:1,000 Immunohistochemistry 1:100 to 1:500. Epitope retrieval with citrate buffer pH 6.0 is recommended for FFPE tissue sections. Immunocytochemistry 1:100 to 1:500. Epitope retrieval with citrate buffer pH6.0 is recommended for FFPE cell sections.
<b>IHC HUMAN CONTROLS</b>	Breast Carcinoma, Gastric Carcinoma, Placenta, Prostate Carcinoma, DLD-1 Cells, MCF-7 Cells, NCI-H226 Cells, PANC-1 Cells
<b>ADDITIONAL INFO</b>	<a href="https://www.fortislife.com/p/A700-262">https://www.fortislife.com/p/A700-262</a> Use the link above to view SDS, a current list of citations, and other product specific information.

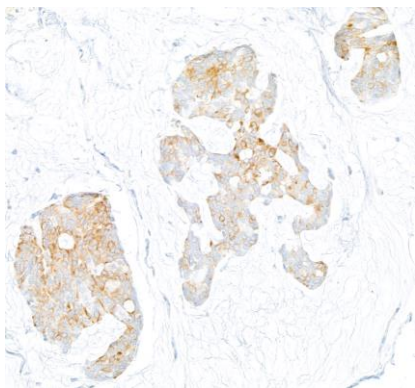
This document certifies that this product has met all of the quality control standards defined by Bethyl Laboratories, Inc.  
Michael Spencer, PhD Date: April 28, 2023



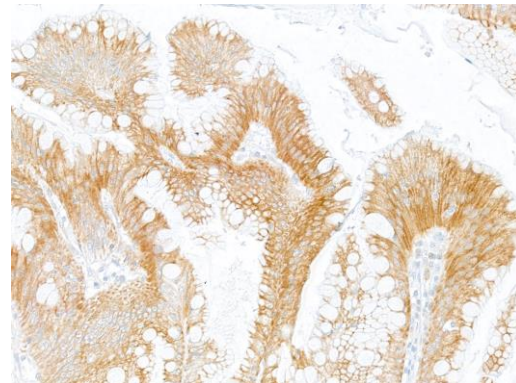
**Detection of human LOX-1 by western blot.** *Samples:* Whole cell lysate (25  $\mu$ g) from DLD-1, MCF-7, and SiHa cells prepared using NETN lysis buffer. *Antibody:* Rabbit anti-LOX-1 recombinant monoclonal antibody [BLR262L] (A700-262 lot 1) used at 1:1000. *Secondary:* HRP-conjugated goat anti-rabbit IgG (A120-101P). *Detection:* Chemiluminescence with an exposure time of 3 minutes. Lower Panel: Rabbit anti-Actin recombinant monoclonal antibody [BLR057F] (A700-057).



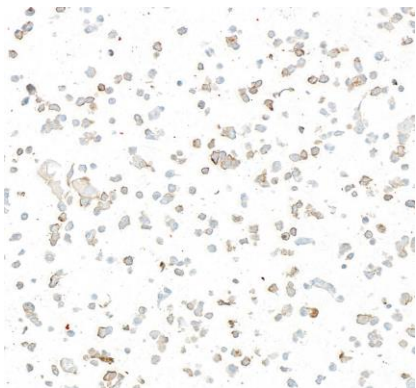
**Detection of human LOX-1 by immunohistochemistry.** *Sample:* FFPE section of human placenta. *Antibody:* Rabbit anti-LOX-1 recombinant monoclonal antibody [BLR262L] (A700-262). *Secondary:* HRP-conjugated goat anti-rabbit IgG (A120-501P).



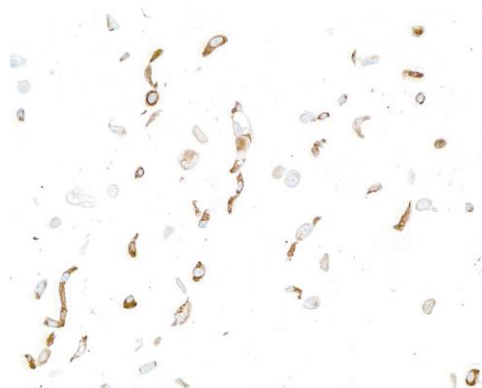
**Detection of human LOX-1 by immunohistochemistry.** *Sample:* FFPE section of human breast carcinoma. *Antibody:* Rabbit anti-LOX-1 recombinant monoclonal antibody [BLR262L] (A700-262). *Secondary:* HRP-conjugated goat anti-rabbit IgG (A120-501P).



**Detection of human LOX-1 by immunohistochemistry.** *Sample:* FFPE section of human gastric carcinoma. *Antibody:* Rabbit anti-LOX-1 recombinant monoclonal antibody [BLR262L] (A700-262). *Secondary:* HRP-conjugated goat anti-rabbit IgG (A120-501P).



**Detection of human LOX-1 by immunocytochemistry.**  
*Sample:* FFPE section of human DLD-1 cells. *Antibody:* Rabbit anti-LOX-1 recombinant monoclonal antibody [BLR262L] (A700-262). *Secondary:* HRP-conjugated goat anti-rabbit IgG (A120-501P).



**Detection of human LOX-1 by immunocytochemistry.**  
*Sample:* FFPE section of human NCI-H226 cells. *Antibody:* Rabbit anti-LOX-1 recombinant monoclonal antibody [BLR262L] (A700-262). *Secondary:* HRP-conjugated goat anti-rabbit IgG (A120-501P).