

BRD7 Recombinant Monoclonal Antibody [BLR220K]

Rabbit Recombinant Monoclonal

Purified	Protein ID	NP_037395.2
Catalog No. A700-220	GeneID	29117
Lot No. A700-220-1		

APPLICATIONS	WB, F
SPECIES REACTIVITY	Human, Mouse
AMOUNT	100 µl (10 blots)
CONCENTRATION	500 µg/ml
STORAGE/SHELF LIFE	2 – 8°C / 1 year from date of receipt
PHYSICAL STATE	Liquid
BUFFER	Borate Buffered Saline (BBS) pH 8.2 with 0.1% BSA and 0.09% Sodium Azide
ISOTYPE	IgG
CLONE #	BLR220K
ORIGIN	USA

PRODUCTION PROCEDURES Recombinant antibody was purified from cell culture supernatant.
Immunogen was a peptide representing a region between residue 150 and 200 of human Bromodomain-containing protein 7 using the numbering given in entry NP_037395.2 (Gene ID 29117).

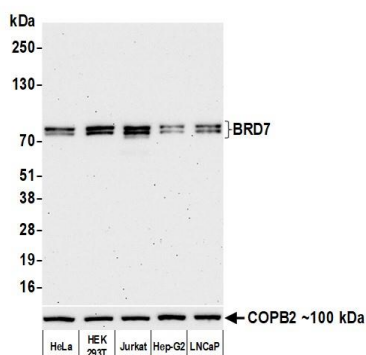
APPLICATIONS Centrifuge tube to remove product from lid. Optimal working dilutions should be determined experimentally by the investigator. Prepare working dilution immediately before use.

Western Blot 1:1,000

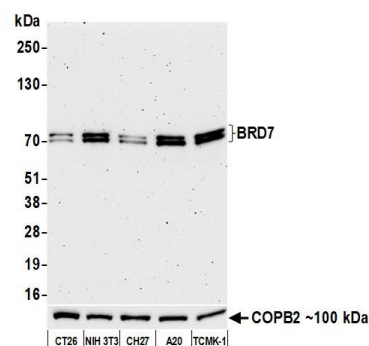
Flow Cytometry Fixed in 4% formaldehyde and permeabilized with 90% methanol. 1 µl per 1 x 10⁶ cells.

ADDITIONAL INFO <https://www.fortislifecom.com/p/A700-220>
Use the link above to view SDS, a current list of citations, and other product specific information.

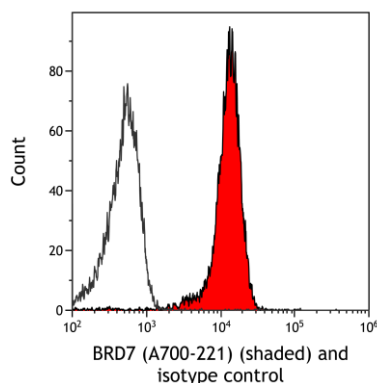
This document certifies that this product has met all of the quality control standards defined by Bethyl Laboratories, Inc.
Michael Spencer, PhD Date: June 30, 2022



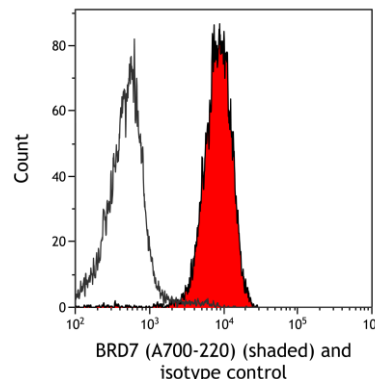
Detection of human BRD7 by western blot. *Samples:* Whole cell lysate (10 µg) from HeLa, HEK293T, Jurkat, Hep-G2, and LNCaP cells prepared using NETN lysis buffer. *Antibody:* Rabbit anti-BRD7 recombinant monoclonal antibody [BLR220K] (A700-220 lot 1) used at 1:1000. *Secondary:* HRP-conjugated goat anti-rabbit IgG (A120-101P). Chemiluminescence with an exposure time of 75 seconds. Lower Panel: Rabbit anti-COPB2 antibody (A304-523A).



Detection of mouse BRD7 by western blot. *Samples:* Whole cell lysate (10 µg) from CT26, NIH 3T3, CH27, A20, and TCMK-1 cells prepared using NETN lysis buffer. *Antibody:* Rabbit anti-BRD7 recombinant monoclonal antibody [BLR220K] (A700-220 lot 1) used at 1:1000. *Secondary:* HRP-conjugated goat anti-rabbit IgG (A120-101P). Chemiluminescence with an exposure time of 3 minutes. Lower Panel: Rabbit anti-COPB2 antibody (A304-523A).



Detection of human BRD7 (shaded) in HeLa cells by flow cytometry. *Antibody:* Rabbit anti-BRD7 recombinant monoclonal antibody [BLR220K] (A700-220) or isotype control (unshaded). *Secondary:* DyLight® 650-conjugated goat anti-rabbit IgG (A120-101D5).



Detection of mouse BRD7 (shaded) in EL4 cells by flow cytometry. *Antibody:* Rabbit anti-BRD7 recombinant monoclonal antibody [BLR220K] (A700-220) or isotype control (unshaded). *Secondary:* DyLight® 650-conjugated goat anti-rabbit IgG (A120-101D5).