

# ARID2 Recombinant Monoclonal Antibody [BLR213K]

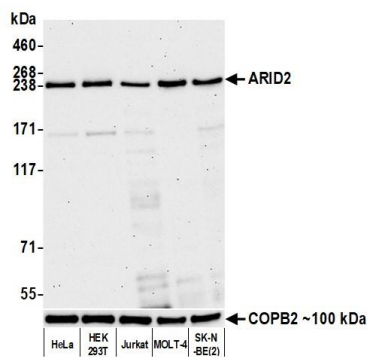
Rabbit Recombinant Monoclonal

Purified Protein ID NP\_689854.2  
Catalog No. A700-213 GeneID 196528  
Lot No. A700-213-1

---

<b>APPLICATIONS</b>	WB, IHC, ICC, F
<b>SPECIES REACTIVITY</b>	Human
<b>AMOUNT</b>	100 µl (50+ tests)
<b>CONCENTRATION</b>	250 µg/ml
<b>STORAGE/SHELF LIFE</b>	2 – 8°C / 1 year from date of receipt
<b>PHYSICAL STATE</b>	Liquid
<b>BUFFER</b>	Borate Buffered Saline (BBS) pH 8.2 with 0.1% BSA and 0.09% Sodium Azide
<b>ISOTYPE</b>	IgG
<b>CLONE #</b>	BLR213K
<b>ORIGIN</b>	USA
<b>PRODUCTION PROCEDURES</b>	Recombinant antibody was purified from cell culture supernatant.  Immunogen was a peptide representing a region between residue 1785 and the C-terminus (residue 1835) of human AT-rich interactive domain-containing protein 2 (aka ARID2) using the numbering given in entry NP_689854.2 (Gene ID 196528).
<b>APPLICATIONS</b>	Centrifuge tube to remove product from lid. Optimal working dilutions should be determined experimentally by the investigator. Prepare working dilution immediately before use.  Western Blot 1:1,000  Immunohistochemistry 1:100 to 1:500. Epitope retrieval with Tris-EDTA pH6.0 is recommended for FFPE tissue sections.  Immunocytochemistry 1:100 to 1:500. Epitope retrieval with Tris-EDTA pH9.0 is recommended for FFPE cell sections.  Flow Cytometry Fixed in 4% formaldehyde and permeabilized with 90% methanol. 1 µl per 1 x 10 <sup>6</sup> cells.
<b>IHC HUMAN CONTROLS</b>	Breast Carcinoma, Lung Carcinoma, Ovarian Carcinoma, Prostate Carcinoma, Testicular Seminoma, Tonsil, HeLa Cells, Hep-G2 Cells, Jurkat Cells, LNCap cells, SK-N-BE (2) Cells
<b>ADDITIONAL INFO</b>	<a href="https://www.bethyl.com/product/A700-213">https://www.bethyl.com/product/A700-213</a> Use the link above to view SDS, a current list of citations, and other product specific information.

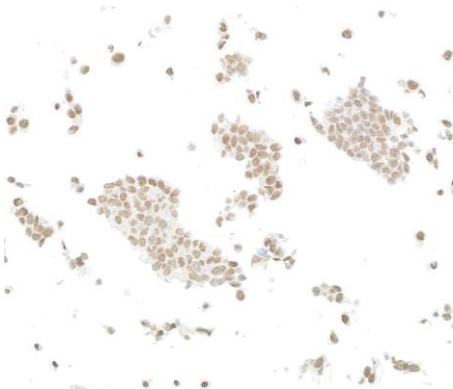
This document certifies that this product has met all of the quality control standards defined by Bethyl Laboratories, Inc.  
Michael Spencer, PhD Date: May 31, 2022



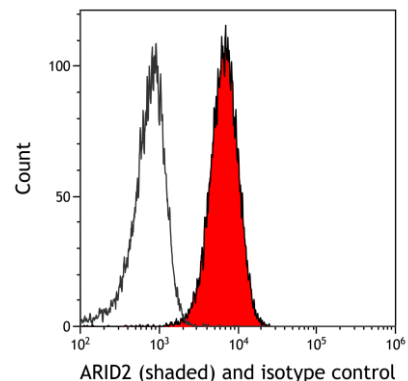
**Detection of human ARID2 by western blot.** *Samples:* Whole cell lysate (10  $\mu$ g) from HeLa, HEK293T, Jurkat, MOLT-4, and SK-N-BE(2) cells prepared using NETN lysis buffer. *Antibody:* Rabbit anti-ARID2 recombinant monoclonal antibody [BLR213K] (A700-213 lot 1) used at 1:1000. *Secondary:* HRP-conjugated goat anti-rabbit IgG (A120-101P). Chemiluminescence with an exposure time of 75 seconds. Lower Panel: Rabbit anti-COPB2 antibody (A304-523A).



**Detection of human ARID2 by immunohistochemistry.** *Sample:* FFPE section of prostate carcinoma. *Antibody:* Rabbit anti-ARID2 recombinant monoclonal antibody [BLR213K] (A700-213 lot 1). *Secondary:* HRP-conjugated goat anti-rabbit IgG (A120-501P).



**Detection of human ARID2 by immunocytochemistry.** *Sample:* FFPE section of LNCaP cells. *Antibody:* Rabbit anti-ARID2 recombinant monoclonal antibody [BLR213K] (A700-213 lot 1). *Secondary:* HRP-conjugated goat anti-rabbit IgG (A120-501P).



**Detection of human ARID2 (shaded) in Jurkat cells by flow cytometry.** *Antibody:* Rabbit anti-ARID2 recombinant monoclonal antibody [BLR0213K] (A700-213) or isotype control (unshaded). *Secondary:* DyLight<sup>®</sup> 488-conjugated goat anti-rabbit IgG (A120-101D2).