

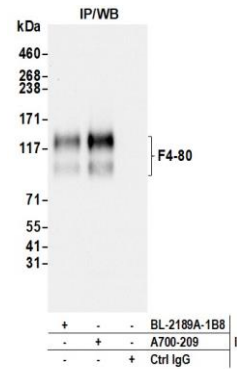
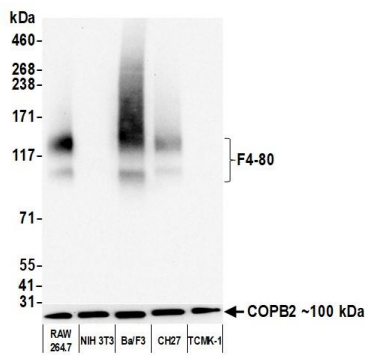
F4/80 Recombinant Monoclonal Antibody [BLR209K]

Rabbit Recombinant Monoclonal

Purified Protein ID NP_034260.1
Catalog No. A700-209 GeneID 13733
Lot No. A700-209-1

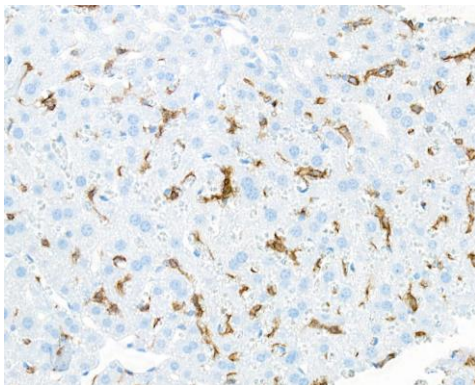
APPLICATIONS	WB, IP, IHC, ICC
SPECIES REACTIVITY	Mouse
AMOUNT	100 µl (50+ tests)
CONCENTRATION	1000 µg/ml
STORAGE/SHELF LIFE	2 – 8°C / 1 year from date of receipt
PHYSICAL STATE	Liquid
BUFFER	Borate Buffered Saline (BBS) pH 8.2 with 0.09% Sodium Azide, BSA Free
ISOTYPE	IgG
CLONE #	BLR209K
ORIGIN	USA
PRODUCTION PROCEDURES	Recombinant antibody was purified from cell culture supernatant. Immunogen was a recombinant protein representing the extracellular domain of mouse Adhesion G protein-coupled receptor E1 (aka F4/80, residues 28-225, NP_034260.1).
APPLICATIONS	Centrifuge tube to remove product from lid. Optimal working dilutions should be determined experimentally by the investigator. Prepare working dilution immediately before use. Western Blot 1:1,000 Immunoprecipitation 6 µl/1 mg lysate Immunohistochemistry 1:100 to 1:500. Epitope retrieval with citrate buffer pH6.0 is recommended for FFPE tissue sections. Immunocytochemistry 1:100 to 1:500. Epitope retrieval with citrate buffer pH6.0 is recommended for FFPE cell sections.
IHC MOUSE CONTROLS	Bone Marrow, Gut, Liver, Plasmacytoma, Spleen, Ba/F3 cells, CH27 Cells, J774A1 Cells
ADDITIONAL INFO	https://www.bethyl.com/product/A700-209 Use the link above to view SDS, a current list of citations, and other product specific information.

This document certifies that this product has met all of the quality control standards defined by Bethyl Laboratories, Inc.
Michael Spencer, PhD Date: March 4, 2022

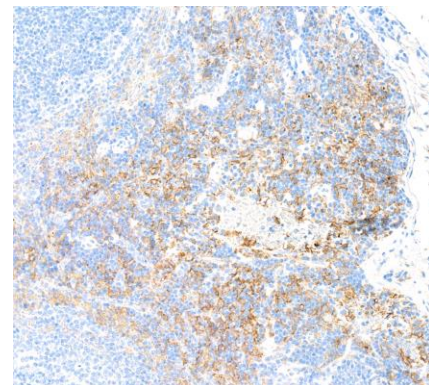


Detection of mouse F4/80 by western blot. Samples: Whole cell lysate (5 µg) from RAW 264.7, NIH 3T3, Ba/F3, CH27, and TCMK-1 cells prepared using NETN lysis buffer. **Antibody:** Rabbit anti-F4/80 recombinant monoclonal antibody [BLR209K] (A700-209 lot 1) used at 1:1000. **Secondary:** HRP-conjugated goat anti-rabbit IgG (A120-101P). Chemiluminescence with an exposure time of 3 seconds. Lower Panel: Rabbit anti-COPB2 antibody (A304-523A).

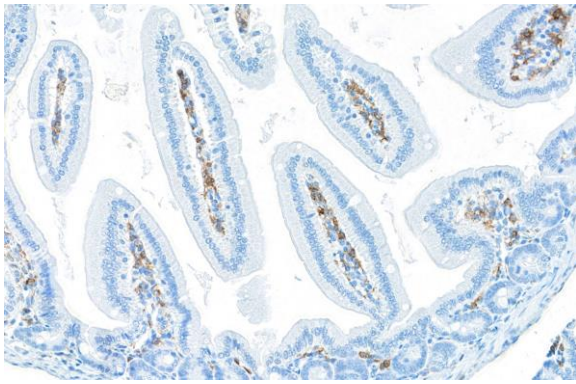
Detection of mouse F4/80 by western blot of immunoprecipitates. Samples: Whole cell lysate (1.0 mg per IP reaction; 5% of IP loaded) from RAW 264.7 cells prepared using NETN lysis buffer. **Antibodies:** Rabbit anti-F4/80 recombinant monoclonal antibody [BLR209K] (A700-209 lot 1) used for IP at 6 µl/mg lysate. F4/80 was also immunoprecipitated by a second antibody against a different epitope of F4/80 (BL-2189A-1B8). For blotting immunoprecipitated F4/80, A700-209 was used at 1:1000. Chemiluminescence with an exposure time of 3 seconds.



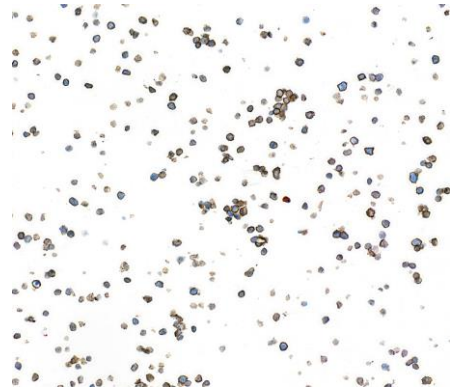
Detection of mouse F4/80 by immunohistochemistry. Sample: FFPE section of mouse liver. **Antibody:** Rabbit anti-F4/80 recombinant monoclonal antibody [BLR209K] (A700-209 lot 1). **Secondary:** HRP-conjugated goat anti-rabbit IgG (A120-501P).



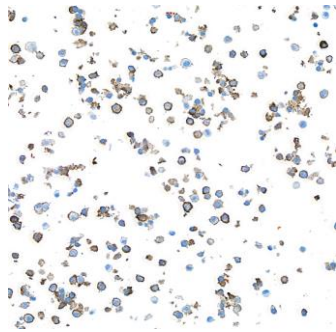
Detection of mouse F4/80 by immunohistochemistry. Sample: FFPE section of mouse spleen. **Antibody:** Rabbit anti-F4/80 recombinant monoclonal antibody [BLR209K] (A700-209 lot 1). **Secondary:** HRP-conjugated goat anti-rabbit IgG (A120-501P).



Detection of mouse F4/80 by immunohistochemistry.
Sample: FFPE section of mouse gut. *Antibody:* Rabbit anti-F4/80 recombinant monoclonal antibody [BLR209K] (A700-209 lot 1). *Secondary:* HRP-conjugated goat anti-rabbit IgG (A120-501P).



Detection of mouse F4/80 by immunocytochemistry.
Sample: FFPE section of RAW 264.7 cells. *Antibody:* Rabbit anti-F4/80 recombinant monoclonal antibody [BLR209K] (A700-209 lot 1). *Secondary:* HRP-conjugated goat anti-rabbit IgG (A120-501P).



Detection of mouse F4/80 by immunocytochemistry. *Sample:* FFPE section of J774A1 cells. *Antibody:* Rabbit anti-F4/80 recombinant monoclonal antibody [BLR209K] (A700-209 lot 1). *Secondary:* HRP-conjugated goat anti-rabbit IgG (A120-501P).