

# TGF-beta 1 Recombinant Monoclonal Antibody [BLR195J]

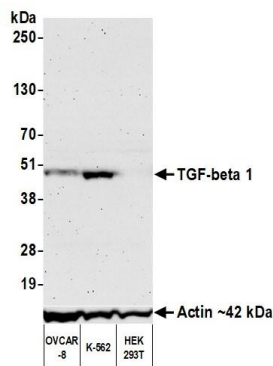
Rabbit Recombinant Monoclonal

Purified Protein ID NP\_000651.3  
Catalog No. A700-195 GeneID 7040  
Lot No. A700-195-1

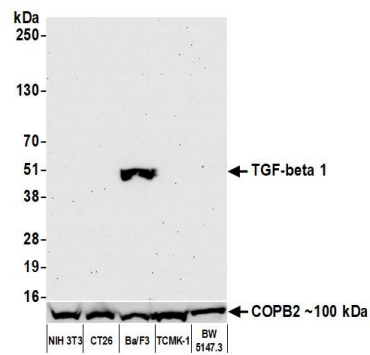
---

<b>APPLICATIONS</b>	WB, IHC, ICC
<b>SPECIES REACTIVITY</b>	Human, Mouse
<b>AMOUNT</b>	100 µl (50+ tests)
<b>CONCENTRATION</b>	1000 µg/ml
<b>STORAGE/SHELF LIFE</b>	2 - 8°C / 1 year from date of receipt
<b>PHYSICAL STATE</b>	Liquid
<b>BUFFER</b>	Borate Buffered Saline (BBS) pH 8.2 with 0.09% Sodium Azide, BSA Free
<b>ISOTYPE</b>	IgG
<b>CLONE #</b>	BLR195J
<b>ORIGIN</b>	USA
<b>PRODUCTION PROCEDURES</b>	Recombinant antibody was purified from cell culture supernatant.  Immunogen was a peptide representing a region between residue 325 and 375 of human Transforming growth factor beta-1 using the numbering given in entry NP_000651.3 (Gene ID 7040).
<b>APPLICATIONS</b>	Centrifuge tube to remove product from lid. Optimal working dilutions should be determined experimentally by the investigator. Prepare working dilution immediately before use.  Western Blot 1:1,000  Immunohistochemistry 1:100 to 1:500. Epitope retrieval with citrate buffer pH6.0 is recommended for FFPE tissue sections.  Immunocytochemistry 1:100 to 1:500. Epitope retrieval with citrate buffer pH6.0 is recommended for FFPE cell sections.
<b>IHC HUMAN CONTROLS</b>	Acute Myeloid Leukemia (AML), Metastatic Lymph Node, Osteosarcoma, 786-O Cells, K-562 Cells, MUTZ-3 cells, THP-1 cells, UT-7 cells
<b>ADDITIONAL INFO</b>	<a href="https://www.bethyl.com/product/A700-195">https://www.bethyl.com/product/A700-195</a> Use the link above to view SDS, a current list of citations, and other product specific information.

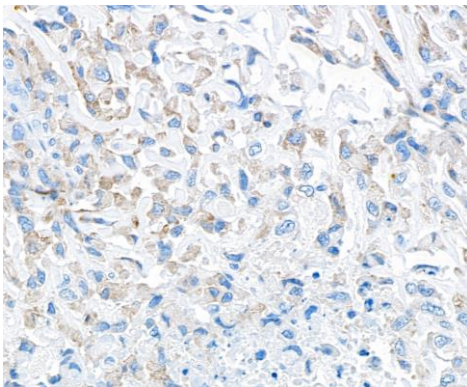
This document certifies that this product has met all of the quality control standards defined by Bethyl Laboratories, Inc.  
Michael Spencer, PhD Date: December 14, 2021



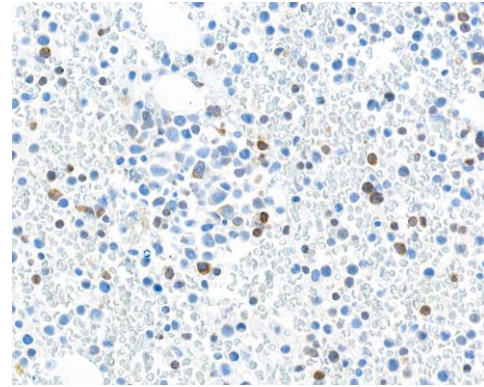
**Detection of human TGF-beta 1 by western blot.** *Samples:* Whole cell lysate (50 µg) from OVCAR-8, K-562, and HEK293T cells prepared using NETN lysis buffer. *Antibody:* Rabbit anti-TGF-beta 1 recombinant monoclonal antibody [BLR195J] (A700-195 lot 1) used at 1:1000. *Secondary:* HRP-conjugated goat anti-rabbit IgG (A120-101P). Chemiluminescence with an exposure time of 3 minutes. Lower Panel: Rabbit anti-Actin recombinant monoclonal antibody [BLR057F] (A700-057).



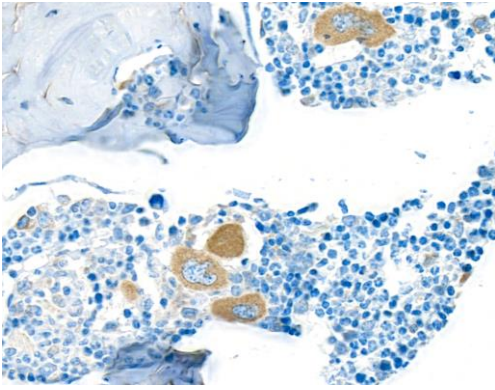
**Detection of mouse TGF-beta 1 by western blot.** *Samples:* Whole cell lysate (50 µg) from NIH 3T3, CT26, Ba/F3, TCMK-1, and BW5147.3 cells prepared using NETN lysis buffer. *Antibody:* Rabbit anti-TGF-beta 1 recombinant monoclonal antibody [BLR195J] (A700-195 lot 1) used at 1:1000. *Secondary:* HRP-conjugated goat anti-rabbit IgG (A120-101P). Chemiluminescence with an exposure time of 75 seconds. Lower Panel: Rabbit anti-COPB2 antibody (A304-523A).



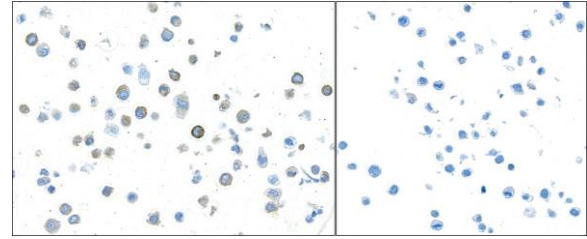
**Detection of human TGF-beta 1 by immunohistochemistry.** *Sample:* FFPE section of osteosarcoma. *Antibody:* Rabbit anti-TGF-beta 1 recombinant monoclonal antibody [BLR195J] (A700-195 lot 1). *Secondary:* HRP-conjugated goat anti-rabbit IgG (A120-501P).



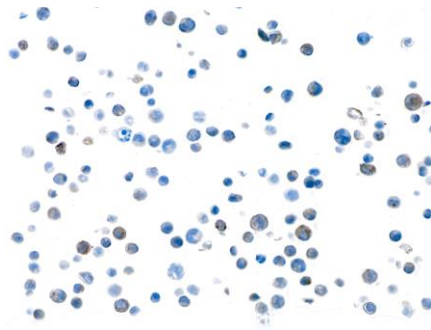
**Detection of human TGF-beta 1 by immunohistochemistry.** *Sample:* FFPE section of acute myeloid leukemia (AML). *Antibody:* Rabbit anti-TGF-beta 1 recombinant monoclonal antibody [BLR195J] (A700-195 lot 1). *Secondary:* HRP-conjugated goat anti-rabbit IgG (A120-501P).



**Detection of mouse TGF-beta 1 by immunohistochemistry.** *Sample:* FFPE section of bone marrow. *Antibody:* Rabbit anti-TGF-beta 1 recombinant monoclonal antibody [BLR195J] (A700-195 lot 1). *Secondary:* HRP-conjugated goat anti-rabbit IgG (A120-501P).



**Detection of human TGF-beta 1 by immunocytochemistry.** *Sample:* FFPE section of THP-1 cells treated with PMA (left) and THP-1 cells untreated (right). *Antibody:* Rabbit anti-TGF-beta 1 recombinant monoclonal antibody [BLR195J] (A700-195 lot 1). *Secondary:* HRP-conjugated goat anti-rabbit IgG (A120-501P).



**Detection of mouse TGF-beta 1 by immunocytochemistry.** *Sample:* FFPE section of Ba/F3. *Antibody:* Rabbit anti-TGF-beta 1 recombinant monoclonal antibody [BLR195J] (A700-195 lot 1). *Secondary:* HRP-conjugated goat anti-rabbit IgG (A120-501P).