

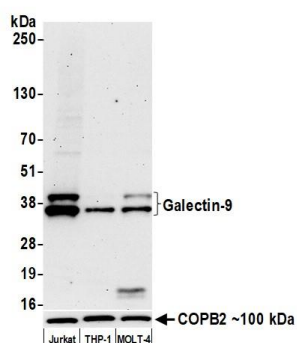
Galectin-9/Gal-9 Recombinant Monoclonal Antibody [BLR193J]

Rabbit Recombinant Monoclonal

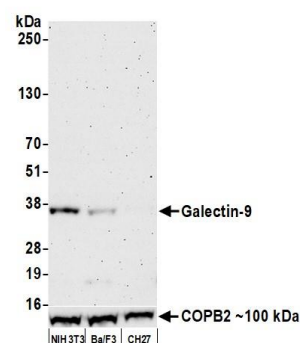
Purified Protein ID NP_033665.1
Catalog No. A700-193 GeneID 3965
Lot No. A700-193-1

APPLICATIONS	WB, IHC, ICC
SPECIES REACTIVITY	Human, Mouse
AMOUNT	100 µl (50+ tests)
CONCENTRATION	500 µg/ml
STORAGE/SHELF LIFE	2 - 8°C / 1 year from date of receipt
PHYSICAL STATE	Liquid
BUFFER	Borate Buffered Saline (BBS) pH 8.2 with 0.1% BSA and 0.09% Sodium Azide
ISOTYPE	IgG
CLONE #	BLR193J
ORIGIN	USA
PRODUCTION PROCEDURES	Recombinant antibody was purified from cell culture supernatant. Immunogen was a peptide representing a region between residue 305 and the C-terminus (residue 355) of human Galectin-9 using the numbering given in entry NP_033665.1 (Gene ID 3965).
APPLICATIONS	Centrifuge tube to remove product from lid. Optimal working dilutions should be determined experimentally by the investigator. Prepare working dilution immediately before use. Western Blot 1:1,000 Immunohistochemistry 1:100 to 1:500. Epitope retrieval with citrate buffer pH6.0 is recommended for FFPE tissue sections. Immunocytochemistry 1:100 to 1:500. Epitope retrieval with citrate buffer pH6.0 is recommended for FFPE cell sections.
IHC HUMAN CONTROLS	Bladder Cell Carcinoma, Breast Carcinoma, Lung Carcinoma, Ovarian Carcinoma, Seminoma, HL-60 Cells, Jurkat Cells, MOLT-4 Cells, THP-1 cells
IHC MOUSE CONTROLS	Gut, Spleen, BW5147.3 cells, EL-4 cells
ADDITIONAL INFO	https://www.bethyl.com/product/A700-193 Use the link above to view SDS, a current list of citations, and other product specific information.

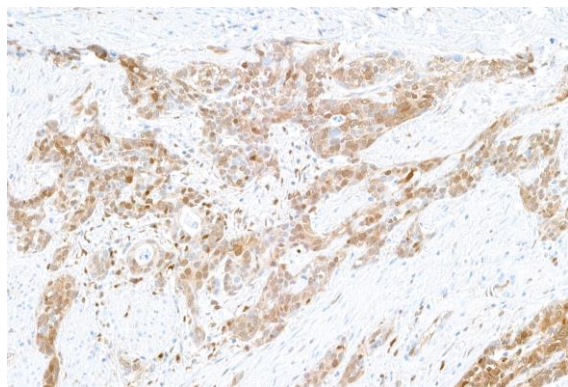
This document certifies that this product has met all of the quality control standards defined by Bethyl Laboratories, Inc.
Michael Spencer, PhD Date: November 2, 2021



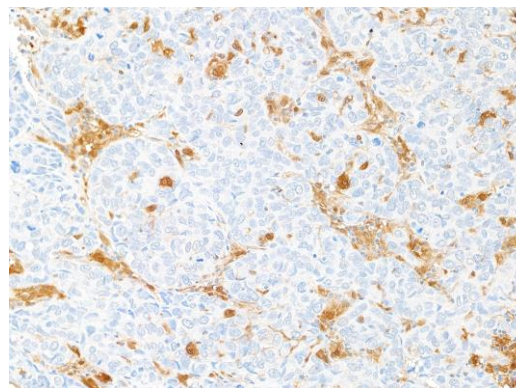
Detection of human Galectin-9 by western blot. *Samples:* Whole cell lysate (10 μ g) from Jurkat, THP-1, and MOLT-4 cells prepared using NETN lysis buffer. *Antibody:* Rabbit anti-Galectin-9 recombinant monoclonal antibody [BLR193J] (A700-193 lot 1) used at 1:1000. *Secondary:* HRP-conjugated goat anti-rabbit IgG (A120-101P). Chemiluminescence with an exposure time of 75 seconds. Lower Panel: Rabbit anti-COPB2 antibody (A304-523A).



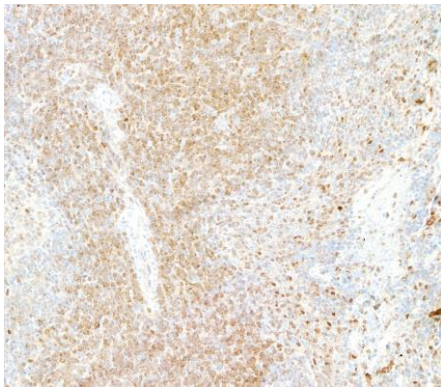
Detection of mouse Galectin-9 by western blot. *Samples:* Whole cell lysate (50 μ g) from NIH 3T3, Ba/F3, and CH27 cells prepared using NETN lysis buffer. *Antibody:* Rabbit anti-Galectin-9 recombinant monoclonal antibody [BL-1675A-4A5] (A700-193 lot 1) used at 1:1000. *Secondary:* HRP-conjugated goat anti-rabbit IgG (A120-101P). Chemiluminescence with an exposure time of 3 minutes.



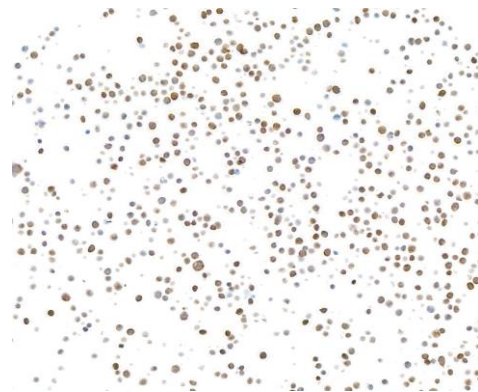
Detection of human Galectin-9/Gal-9 by immunohistochemistry. *Sample:* FFPE section of bladder carcinoma. *Antibody:* Rabbit anti-Galectin-9/Gal-9 recombinant monoclonal antibody [BLR193J] (A700-193 lot 1). *Secondary:* HRP-conjugated goat anti-rabbit IgG (A120-501P).



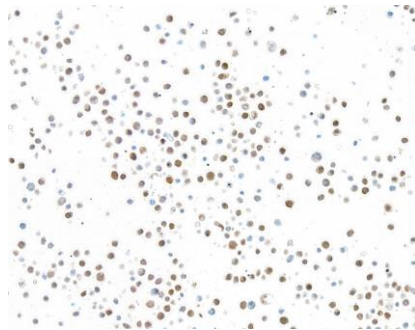
Detection of human Galectin-9/Gal-9 by immunohistochemistry. *Sample:* FFPE section of breast carcinoma. *Antibody:* Rabbit anti-Galectin-9/Gal-9 recombinant monoclonal antibody [BLR193J] (A700-193-1). *Secondary:* HRP-conjugated goat anti-rabbit IgG (A120-501P).



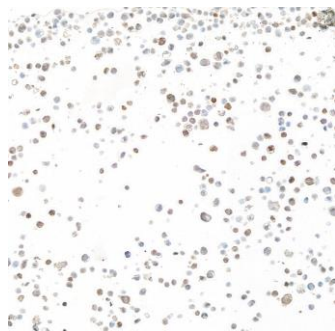
Detection of mouse Galectin-9/Gal-9 by immunohistochemistry. *Sample:* FFPE section of mouse spleen. *Antibody:* Rabbit anti-Galectin-9/Gal-9 recombinant monoclonal antibody [BLR193J] (A700-193-1). *Secondary:* HRP-conjugated goat anti-rabbit IgG (A120-501P).



Detection of human Galectin-9/Gal-9 by immunocytochemistry. *Sample:* FFPE section of jurkat cells. *Antibody:* Rabbit anti-Galectin-9/Gal-9 recombinant monoclonal antibody [BLR193J] (A700-193-1). *Secondary:* HRP-conjugated goat anti-rabbit IgG (A120-501P).



Detection of human Galectin-9/Gal-9 by immunocytochemistry. *Sample:* FFPE section of HL-60 cells. *Antibody:* Rabbit anti-Galectin-9/Gal-9 recombinant monoclonal antibody [BLR193J] (A700-193-1). *Secondary:* HRP-conjugated goat anti-rabbit IgG (A120-501P).



Detection of mouse Galectin-9/Gal-9 by immunocytochemistry. *Sample:* FFPE section of BW5147.3 cells. *Antibody:* Rabbit anti-Galectin-9/Gal-9 recombinant monoclonal antibody [BLR193J] (A700-193-1). *Secondary:* HRP-conjugated goat anti-rabbit IgG (A120-501P).