

# NF-H Recombinant Monoclonal Antibody [BLR190J]

Rabbit Recombinant Monoclonal

Purified		Protein ID	P19246
Catalog No.	A700-190	GeneID	380684
Lot No.	A700-190-1		

---

<b>APPLICATIONS</b>	WB, IP, IHC
<b>SPECIES REACTIVITY</b>	Mouse
<b>AMOUNT</b>	100 µl (50+ tests)
<b>CONCENTRATION</b>	50 µg/ml
<b>STORAGE/SHELF LIFE</b>	2 – 8° C / 1 year from date of receipt
<b>PHYSICAL STATE</b>	Liquid
<b>BUFFER</b>	Borate Buffered Saline (BBS) pH 8.2 with 0.1% BSA and 0.09% Sodium Azide
<b>ISOTYPE</b>	IgG
<b>CLONE #</b>	BLR190J
<b>ORIGIN</b>	USA
<b>PRODUCTION PROCEDURES</b>	Recombinant antibody was purified from cell culture supernatant.

Immunogen was a peptide representing a region between residue 1040 and the C-terminus (residue 1090) of mouse neurofilament heavy using the numbering given in entry NP\_035034.2 (Gene ID 380684).

**APPLICATIONS** Centrifuge tube to remove product from lid. Optimal working dilutions should be determined experimentally by the investigator. Prepare working dilution immediately before use.

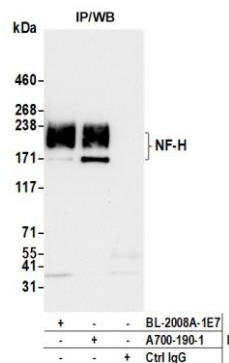
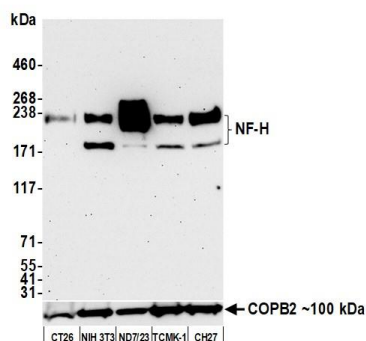
Western Blot	1:1000
Immunoprecipitation	20 µl/mg lysate
Immunohistochemistry	1:100 to 1:500. Epitope retrieval with citrate buffer pH6.0 is recommended for FFPE tissue sections.

**IHC MOUSE CONTROLS** Brain, Spinal Cord

**ADDITIONAL INFO** <https://www.bethyl.com/product/A700-190>

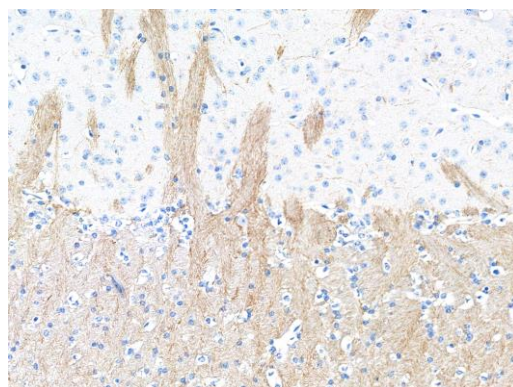
Use the link above to view SDS, a current list of citations, and other product specific information.

This document certifies that this product has met all of the quality control standards defined by Bethyl Laboratories, Inc.  
Michael Spencer, PhD Date: August 30, 2021



**Detection of mouse NF-H by western blot.** *Samples:* Whole cell lysate (50 µg) from CT26, NIH 3T3, ND7/23 (10 µg), TCMK-1, and CH27 cells prepared using NETN lysis buffer. *Antibody:* Rabbit anti-NF-H recombinant monoclonal antibody [BLR190J] (A700-190 lot 1) used at 1:1000. *Secondary:* HRP-conjugated goat anti-rabbit IgG (A120-101P). Chemiluminescence with an exposure time of 10 seconds. Lower Panel: Rabbit anti-COPB2 antibody (A304-523A).

**Detection of mouse NF-H by western blot of immunoprecipitates.** *Samples:* Whole cell lysate (1.0 mg per IP reaction; 5% of IP loaded) from ND7/23 cells prepared using NETN lysis buffer. *Antibodies:* Rabbit anti-NF-H recombinant monoclonal antibody [BLR190J] (A700-190 lot 1) used for IP at 20 µl/mg lysate. NF-H was also immunoprecipitated by a second antibody against a different epitope of NF-H (BL-2008A-1E7). For blotting immunoprecipitated NF-H, A700-190 was used at 1:1000. Chemiluminescence with an exposure time of 10 seconds.



**Detection of mouse NF-H in mouse brain by IHC.** *Antibody:* Rabbit anti-NF-H recombinant monoclonal antibody [BLR190J] (A700-190 lot 1). *Secondary:* HRP-conjugated goat anti-rabbit IgG (A120-501P). *Substrate:* DAB