

Cleaved PARP1 Recombinant Monoclonal Antibody [BLR183J]

Rabbit Recombinant Monoclonal

Purified		Protein ID	P09874
Catalog No.	A700-183	GeneID	142
Lot No.	A700-183-1		

APPLICATIONS	WB, IP, IHC, ICC
SPECIES REACTIVITY	Human
AMOUNT	100 µl (50+ tests)
CONCENTRATION	1000 µg/ml
STORAGE/SHELF LIFE	2 – 8° C / 1 year from date of receipt
PHYSICAL STATE	Liquid
BUFFER	Borate Buffered Saline (BBS) pH 8.2 with 0.09% Sodium Azide, BSA Free
ISOTYPE	IgG
CLONE #	BLR183J
ORIGIN	USA
PRODUCTION PROCEDURES	Recombinant antibody was purified from cell culture supernatant. Immunogen was a peptide representing the cleaved N-terminal of human Poly [ADP-ribose] polymerase 1 (PARP1, a region between residue 215 and 265) using the numbering given in entry NP_001609.2 (Gene ID 142).

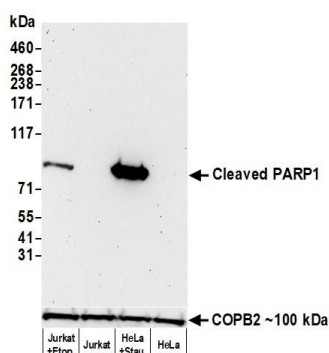
APPLICATIONS Centrifuge tube to remove product from lid. Optimal working dilutions should be determined experimentally by the investigator. Prepare working dilution immediately before use.

Western Blot	1:1000
Immunoprecipitation	6 µl/mg lysate
Immunohistochemistry	1:100 to 1:500. Epitope retrieval with citrate buffer pH6.0 is recommended for FFPE tissue sections.
Immunocytochemistry	1:100 to 1:500. Epitope retrieval with citrate buffer pH6.0 is recommended for FFPE cell sections.

IHC HUMAN CONTROLS Burkitt lymphoma, Tonsil, HeLa Cells, Jurkat Cells, RPMI-8226 Cells

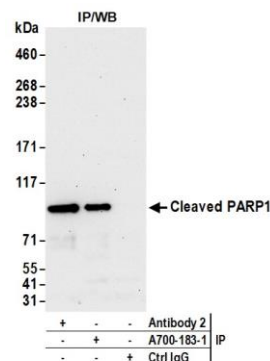
ADDITIONAL INFO <https://www.bethyl.com/product/A700-183>
Use the link above to view SDS, a current list of citations, and other product specific information.

This document certifies that this product has met all of the quality control standards defined by Bethyl Laboratories, Inc.
Michael Spencer, PhD Date: August 30, 2021



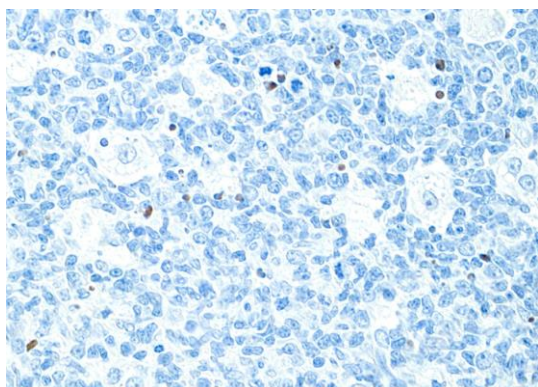
Detection of human Cleaved PARP1 by western blot.

Samples: Whole cell lysate (50 µg) from etoposide-treated Jurkat cells, untreated Jurkat cells, 1 µM staurosporine-treated HeLa cells, and untreated HeLa cells prepared using NETN lysis buffer. **Antibody:** Rabbit anti-Cleaved PARP1 recombinant monoclonal antibody [BLR183J] (A700-183 lot 1) used at 1:1000. **Secondary:** HRP-conjugated goat anti-rabbit IgG (A120-101P). Chemiluminescence with an exposure time of 3 minutes. Lower Panel: Rabbit anti-COPB2 antibody (A304-523A).



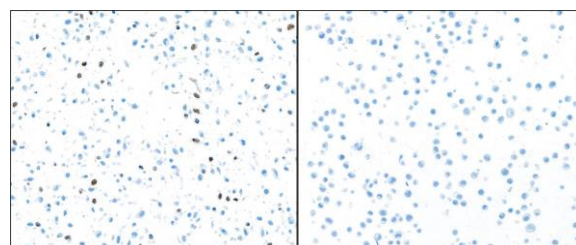
Detection of human Cleaved PARP1 by western blot of immunoprecipitates.

Samples: Whole cell lysate (1.0 mg per IP reaction; 10% of IP loaded) from etoposide-treated Jurkat cells prepared using NETN lysis buffer. **Antibodies:** Rabbit anti-Cleaved PARP1 recombinant monoclonal antibody [BLR183J] (A700-183 lot 1) used for IP at 6 µl/mg lysate. Cleaved PARP1 was also immunoprecipitated by a second antibody against a different epitope of cleaved PARP1 (Antibody 2). For blotting immunoprecipitated Cleaved PARP1, A700-183 was used at 1:1000. Chemiluminescence with an exposure time of 30 seconds.



Detection of human Cleaved PARP1 in tonsil by IHC.

Antibody: Rabbit anti-Cleaved PARP1 recombinant monoclonal antibody [BLR183J] (A700-183 lot 1). **Secondary:** HRP-conjugated goat anti-rabbit IgG (A120-501P). **Substrate:** DAB



Detection of human Cleaved PARP1 in HeLa cells treated with Staurosporine (left) and untreated HeLa cells (right) by ICC.

Antibody: Rabbit anti-Cleaved PARP1 recombinant monoclonal antibody [BLR183J] (A700-183 lot 1). **Secondary:** HRP-conjugated goat anti-rabbit IgG (A120-501P). **Substrate:** DAB