

PU.1 Recombinant Monoclonal Antibody [BLR179J]

Rabbit Recombinant Monoclonal

Purified		Protein ID	P17947
Catalog No.	A700-179	GeneID	6688
Lot No.	A700-179-1		

APPLICATIONS	WB, IP, IHC, ICC
SPECIES REACTIVITY	Human, Mouse
AMOUNT	100 µl (50+ tests)
CONCENTRATION	1000 µg/ml
STORAGE/SHELF LIFE	2 – 8° C / 1 year from date of receipt
PHYSICAL STATE	Liquid
BUFFER	Borate Buffered Saline (BBS) pH 8.2 with 0.09% Sodium Azide, BSA Free
ISOTYPE	IgG
CLONE #	BLR179J
ORIGIN	USA
PRODUCTION PROCEDURES	Recombinant antibody was purified from cell culture supernatant.

Immunogen was a peptide representing a region between residue 220 and the C-terminus (residue 270) of human transcription factor PU.1 using the numbering given in entry NP_003111.2 (Gene ID 6688).

APPLICATIONS Centrifuge tube to remove product from lid. Optimal working dilutions should be determined experimentally by the investigator. Prepare working dilution immediately before use.

Western Blot	1:1000
Immunoprecipitation	6 µl/mg lysate
Immunohistochemistry	1:100 to 1:500. Epitope retrieval with citrate buffer pH6.0 is recommended for FFPE tissue sections.
Immunocytochemistry	1:100 to 1:500. Epitope retrieval with citrate buffer pH6.0 is recommended for FFPE cell sections.

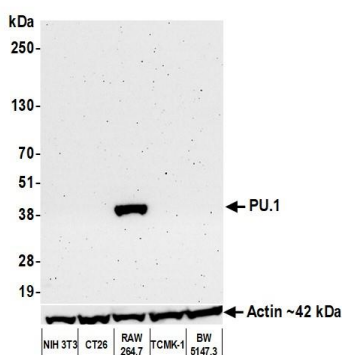
APPLICATION NOTES This product is not recommended for western blot on human cell lines or tissues. Product A700-178 is preferred for human western blot.

IHC HUMAN CONTROLS Non-Hodgkins Lymphoma, Skin Squamous Cell Carcinoma, THP-1 cells

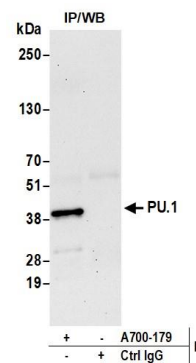
IHC MOUSE CONTROLS Bone Marrow, Renal Cell Carcinoma, RAW264.7 Cells

ADDITIONAL INFO <https://www.bethyl.com/product/A700-179>
Use the link above to view SDS, a current list of citations, and other product specific information.

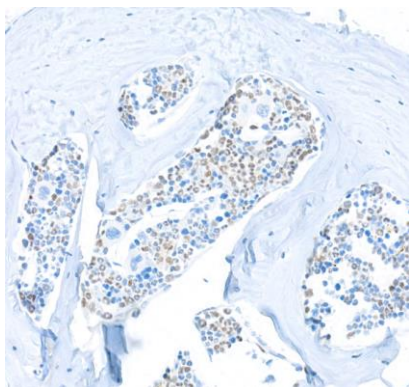
This document certifies that this product has met all of the quality control standards defined by Bethyl Laboratories, Inc.
Michael Spencer, PhD Date: August 30, 2021



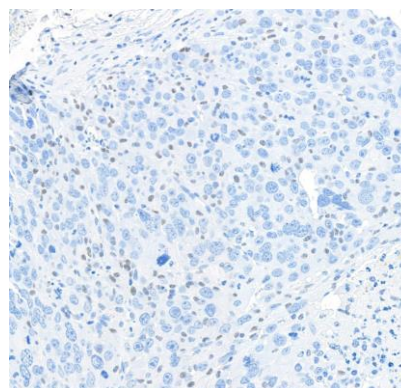
Detection of mouse PU.1 by western blot. *Samples:* Whole cell lysate (50 µg) from NIH 3T3, CT26, RAW 264.7, TCMK-1, and BW5147.3 cells prepared using NETN lysis buffer. *Antibody:* Rabbit anti-PU.1 recombinant monoclonal antibody [BLR179J] (A700-179 lot 1) used at 1:1000. *Secondary:* HRP-conjugated goat anti-rabbit IgG (A120-101P). Chemiluminescence with an exposure time of 3 minutes. Lower Panel: Rabbit anti-Actin recombinant monoclonal antibody [BLR057F] (A700-057).



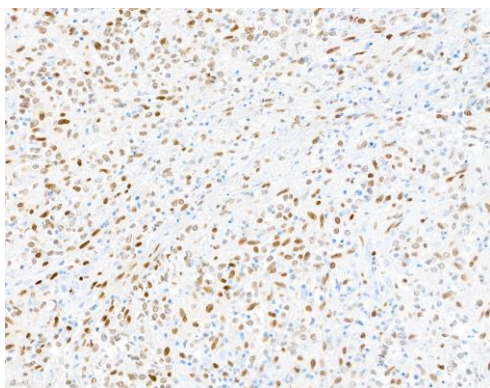
Detection of mouse PU.1 by western blot of immunoprecipitates. *Samples:* Whole cell lysate (1.0 mg per IP reaction; 20% of IP loaded) from RAW 264.7 cells prepared using NETN lysis buffer. *Antibody:* Rabbit anti-PU.1 recombinant monoclonal antibody [BLR179J] (A700-179 lot 1) used at 6 µl per reaction. For blotting immunoprecipitated PU.1, A700-179 was used at 1:1000. Chemiluminescence with an exposure time of 3 minutes.



Detection of mouse PU.1 in bone marrow by IHC. *Antibody:* Rabbit anti-PU.1 recombinant monoclonal antibody [BLR179J] (A700-179 lot 1). *Secondary:* HRP-conjugated goat anti-rabbit IgG (A120-501P). *Substrate:* DAB



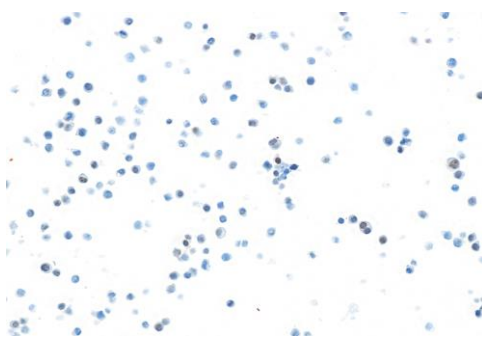
Detection of mouse PU.1 in RENCA syngeneic tumor by IHC. *Antibody:* Rabbit anti-PU.1 recombinant monoclonal antibody [BLR179J] (A700-179 lot 1). *Secondary:* HRP-conjugated goat anti-rabbit IgG (A120-501P). *Substrate:* DAB



Detection of human PU.1 in Non-hodgkin lymphoma by IHC. *Antibody:* Rabbit anti-PU.1 recombinant monoclonal antibody [BLR179J] (A700-179 lot 1). *Secondary:* HRP-conjugated goat anti-rabbit IgG (A120-501P). *Substrate:* DAB



Detection of human PU.1 in THP-1 cells by ICC. *Antibody:* Rabbit anti-PU.1 recombinant monoclonal antibody [BLR179J] (A700-179 lot 1). *Secondary:* HRP-conjugated goat anti-rabbit IgG (A120-501P). *Substrate:* DAB



Detection of mouse PU.1 in RAW 246.7 cells by ICC. *Antibody:* Rabbit anti-PU.1 recombinant monoclonal antibody [BLR179J] (A700-179 lot 1). *Secondary:* HRP-conjugated goat anti-rabbit IgG (A120-501P). *Substrate:* DAB