

PU.1 Recombinant Monoclonal Antibody [BLR178J]

Rabbit Recombinant Monoclonal

Purified		Protein ID	P17947
Catalog No.	A700-178	GeneID	6688
Lot No.	A700-178-1		

APPLICATIONS	WB, IP, IHC, ICC
SPECIES REACTIVITY	Human
AMOUNT	100 µl (50+ tests)
CONCENTRATION	500 µg/ml
STORAGE/SHELF LIFE	2 – 8° C / 1 year from date of receipt
PHYSICAL STATE	Liquid
BUFFER	Borate Buffered Saline (BBS) pH 8.2 with 0.1% BSA and 0.09% Sodium Azide
ISOTYPE	IgG
CLONE #	BLR178J
ORIGIN	USA
PRODUCTION PROCEDURES	Recombinant antibody was purified from cell culture supernatant.

Immunogen was a peptide representing a region between residue 1 and 50 of human transcription factor PU.1 using the numbering given in entry NP_003111.2 (Gene ID 6688).

APPLICATIONS Centrifuge tube to remove product from lid. Optimal working dilutions should be determined experimentally by the investigator. Prepare working dilution immediately before use.

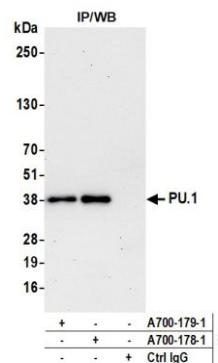
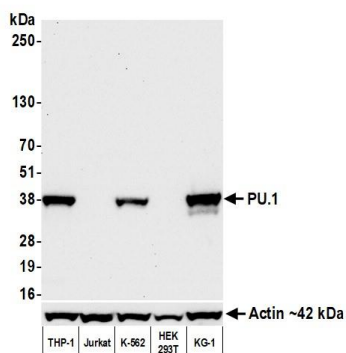
Western Blot	1:1000
Immunoprecipitation	12 µl/mg lysate
Immunohistochemistry	1:100 to 1:500. Epitope retrieval with citrate buffer pH6.0 is recommended for FFPE tissue sections.
Immunocytochemistry	1:100 to 1:500. Epitope retrieval with citrate buffer pH6.0 is recommended for FFPE cell sections.

IHC HUMAN CONTROLS Lymph Node, Skin Squamous Cell Carcinoma, Tonsil, HL-60 Cells, KG-1 Cells, MUTZ-3 Cells, THP-1 cells, UT-7 Cells

ADDITIONAL INFO <https://www.bethyl.com/product/A700-178>

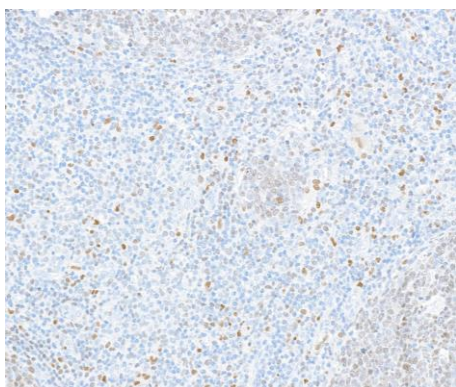
Use the link above to view SDS, a current list of citations, and other product specific information.

This document certifies that this product has met all of the quality control standards defined by Bethyl Laboratories, Inc.
Michael Spencer, PhD Date: August 30, 2021

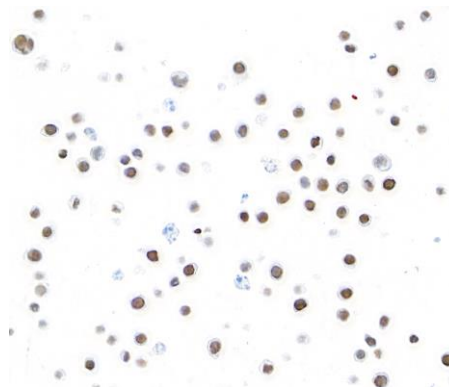


Detection of human PU.1 by western blot. *Samples:* Whole cell lysate (50 µg) from THP-1, Jurkat, K-562, HEK293T, and KG-1 cells prepared using NETN lysis buffer. *Antibody:* Rabbit anti-PU.1 recombinant monoclonal antibody [BLR178J] (A700-178 lot 1) used at 1:1000. *Secondary:* HRP-conjugated goat anti-rabbit IgG (A120-101P). Chemiluminescence with an exposure time of 10 seconds.

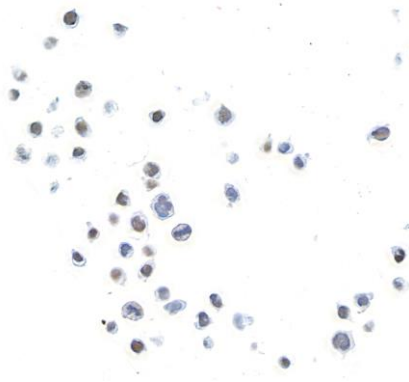
Detection of human PU.1 by western blot of immunoprecipitates. *Samples:* Whole cell lysate (1.0 mg per IP reaction; 20% of IP loaded) from THP-1 cells prepared using NETN lysis buffer. *Antibodies:* Rabbit anti-PU.1 recombinant monoclonal antibody [BLR178J] (A700-178 lot 1) used for IP at 12 µl/mg lysate. PU.1 was also immunoprecipitated by a second antibody against a different epitope of PU.1 (A700-179). For blotting immunoprecipitated PU.1, A700-178 was used at 1:1000. Chemiluminescence with an exposure time of 30 seconds.



Detection of human PU.1 in tonsil by IHC. *Antibody:* Rabbit anti-PU.1 recombinant monoclonal antibody [BLR178J] (A700-178 lot 1). *Secondary:* HRP-conjugated goat anti-rabbit IgG (A120-501P). *Substrate:* DAB



Detection of human PU.1 in HL-60 cells by ICC. *Antibody:* Rabbit anti-PU.1 recombinant monoclonal antibody [BLR178J] (A700-178 lot 1). *Secondary:* HRP-conjugated goat anti-rabbit IgG (A120-501P). *Substrate:* DAB



Detection of human PU.1 in THP-1 cells by ICC. *Antibody:* Rabbit anti-PU.1 recombinant monoclonal antibody [BLR178J] (A700-178 lot 1). *Secondary:* HRP-conjugated goat anti-rabbit IgG (A120-501P). *Substrate:* DAB