

CD103/ITGAE Monoclonal Antibody [BLR171J]

Rabbit Recombinant Monoclonal

Purified Protein ID NP_002199.3
Catalog No. A700-171 GeneID 3682
Lot No. A700-171-1



APPLICATIONS WB, IP, IHC, ICC
SPECIES REACTIVITY Human
AMOUNT 100 µl (50+ tests)
CONCENTRATION 1000 µg/ml
STORAGE/SHELF LIFE 2 – 8° C / 1 year from date of receipt
PHYSICAL STATE Liquid
BUFFER Borate Buffered Saline (BBS) pH 8.2 with 0.09% Sodium Azide, BSA Free
ISOTYPE IgG
CLONE # BLR171J
ORIGIN USA
PRODUCTION PROCEDURES Recombinant antibody was purified from cell culture supernatant.

Immunogen was a peptide representing a region between residue 400 and 450 of human Integrin alpha-E (aka CD103) using the numbering given in entry NP_002199.3 (Gene ID 3682).

APPLICATIONS Centrifuge tube to remove product from lid. Optimal working dilutions should be determined experimentally by the investigator. Prepare working dilution immediately before use.

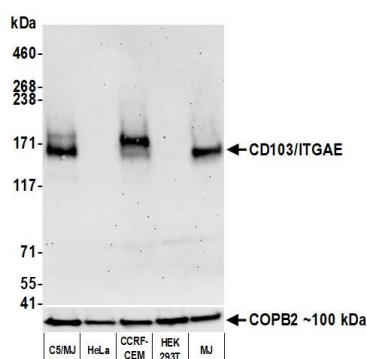
Western Blot 1:1,000
Immunoprecipitation 6 µl/1 mg lysate
Immunohistochemistry 1:100 to 1:500. Epitope retrieval with citrate buffer pH6.0 is recommended for FFPE tissue sections.
Immunocytochemistry 1:100 to 1:500. Epitope retrieval with citrate buffer pH6.0 is recommended for FFPE cell sections.

IHC HUMAN CONTROLS Appendix, Breast Carcinoma, Colon Carcinoma, Liver Carcinoma, Prostate Carcinoma, Skin Squamous Cell Carcinoma, Spleen, Tonsil, C5/MJ Cells

ADDITIONAL INFO <https://www.bethyl.com/product/A700-171>

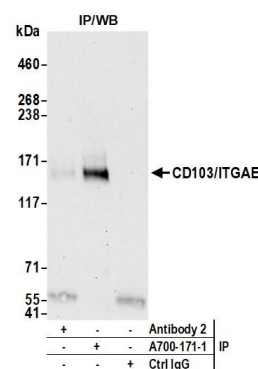
Use the link above to view SDS, a current list of citations, and other product specific information.

This document certifies that this product has met all of the quality control standards defined by Bethyl Laboratories, Inc.
Brian McWilliams, PhD Date: June 2, 2021



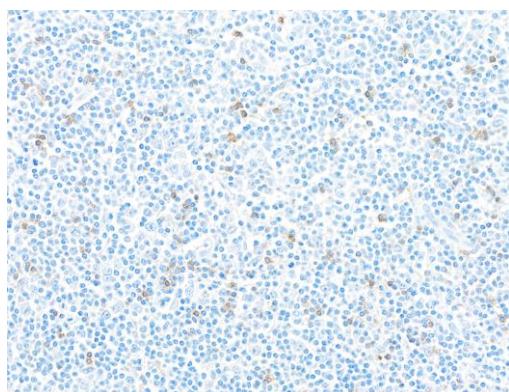
Detection of human CD103/ITGAE by western blot.

Samples: Whole cell lysate (50 µg) from C5/MJ, HeLa, CCRF-CEM, HEK293T, and MJ cells prepared using NETN lysis buffer. **Antibody:** Rabbit anti-CD103/ITGAE recombinant monoclonal antibody [BLR171J] (A700-171 lot 1) used at 1:1000. **Secondary:** HRP-conjugated goat anti-rabbit IgG (A120-101P). Chemiluminescence with an exposure time of 75 seconds. Lower Panel: Rabbit anti-COPB2 antibody (A304-523A).



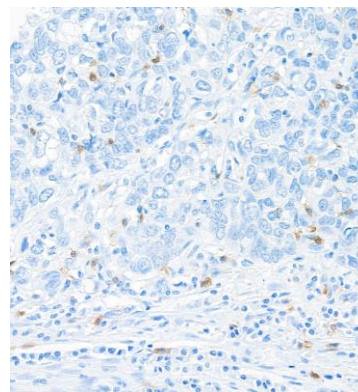
Detection of human CD103/ITGAE by western blot of immunoprecipitates.

Samples: Whole cell lysate (1.0 mg per IP reaction; 20% of IP loaded) from MJ cells prepared using NETN lysis buffer. **Antibodies:** Rabbit anti-CD103/ITGAE recombinant monoclonal antibody [BLR171J] (A700-171 lot 1) used for IP at 6 µl/mg lysate. CD103/ITGAE was also immunoprecipitated by a second antibody against a different epitope of CD103/ITGAE (Antibody 2). For blotting immunoprecipitated CD103/ITGAE, A700-171 was used at 1:1000. Chemiluminescence with an exposure time of 30 seconds.



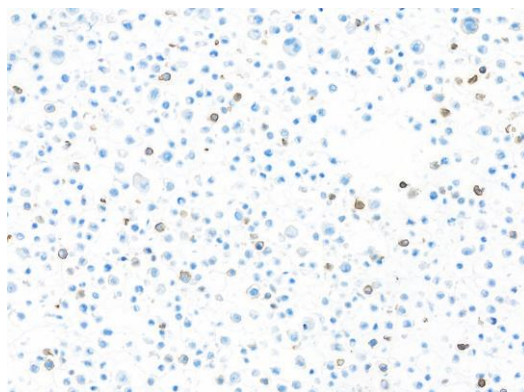
Detection of human CD103/ITGAE in FFPE tonsil by IHC.

Antibody: Rabbit anti-CD103/ITGAE recombinant monoclonal antibody [BLR171J] (A700-171 lot 1). **Secondary:** HRP-conjugated goat anti-rabbit IgG (A120-501P). **Substrate:** DAB.



Detection of human CD103/ITGAE in FFPE breast carcinoma by IHC.

Antibody: Rabbit anti-CD103/ITGAE recombinant monoclonal antibody [BLR171J] (A700-171 lot 1). **Secondary:** HRP-conjugated goat anti-rabbit IgG (A120-501P). **Substrate:** DAB.



Detection of human CD103/ITGAE in FFPE C5/MJ cells by ICC. *Antibody:* Rabbit anti-CD103/ITGAE recombinant monoclonal antibody [BLR171J] (A700-171 lot 1). *Secondary:* HRP-conjugated goat anti-rabbit IgG (A120-501P). *Substrate:* DAB.