

ASCL1 /MASH1 Monoclonal Antibody [BLR164J]

Rabbit Recombinant Monoclonal

Purified Protein ID NP_004307.2
Catalog No. A700-164 GeneID 429
Lot No. A700-164-1



APPLICATIONS WB, IP, IHC, ICC
SPECIES REACTIVITY Human, Mouse
AMOUNT 100 µl (50+ tests)
CONCENTRATION 1000 µg/ml
STORAGE/SHELF LIFE 2 – 8° C / 1 year from date of receipt
PHYSICAL STATE Liquid
BUFFER Borate Buffered Saline (BBS) pH 8.2 with 0.09% Sodium Azide, BSA Free
ISOTYPE IgG
CLONE # BLR164J
ORIGIN USA
PRODUCTION PROCEDURES Recombinant antibody was purified from cell culture supernatant.

Immunogen was a peptide representing a region between residue 186 and the C-terminus (residue 236) of human Achaete-scute homolog 1 using the numbering given in entry NP_004307.2 (Gene ID 429).

APPLICATIONS Centrifuge tube to remove product from lid. Optimal working dilutions should be determined experimentally by the investigator. Prepare working dilution immediately before use.

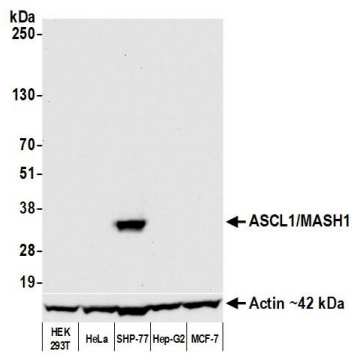
Western Blot 1:1,000
Immunoprecipitation 6 µl/1 mg lysate
Immunohistochemistry 1:100 to 1:500. Epitope retrieval with citrate buffer pH6.0 is recommended for FFPE tissue sections.
Immunocytochemistry 1:100 to 1:500. Epitope retrieval with citrate buffer pH6.0 is recommended for FFPE cell sections.

IHC HUMAN CONTROLS Glioblastoma, SHP-77 Cells, SK-N-BE (2) Cells

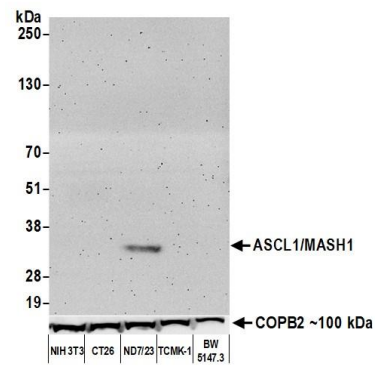
IHC MOUSE CONTROLS Brain

ADDITIONAL INFO <https://www.bethyl.com/product/A700-164>
Use the link above to view SDS, a current list of citations, and other product specific information.

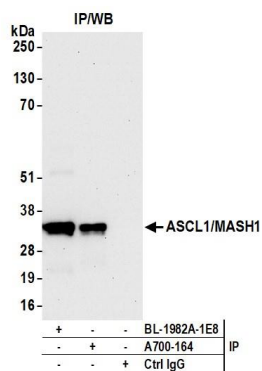
This document certifies that this product has met all of the quality control standards defined by Bethyl Laboratories, Inc.
Brian McWilliams, PhD Date: May 1, 2021

**Detection of human ASCL1/MASH1 by western blot.**

Samples: Whole cell lysate (50 µg) from HEK293T, HeLa, SHP-77, Hep-G2, and MCF-7 cells prepared using NETN lysis buffer. *Antibody:* Rabbit anti-ASCL1/MASH1 recombinant monoclonal antibody [BLR164J] (A700-164 lot 1) used at 1:1000. *Secondary:* HRP-conjugated goat anti-rabbit IgG (A120-101P). Chemiluminescence with an exposure time of 10 seconds. Lower Panel: Rabbit anti-Actin recombinant monoclonal antibody [BLR057F] (A700-057).

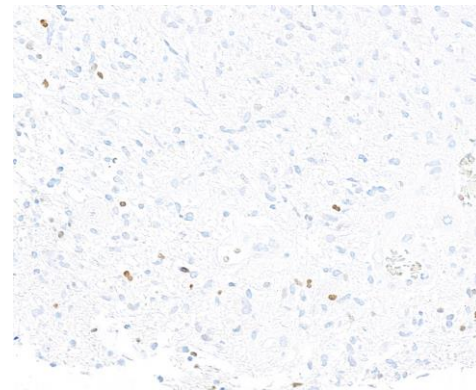
**Detection of mouse ASCL1/MASH1 by western blot.**

Samples: Whole cell lysate (50 µg) from NIH 3T3, CT26, ND7/23, TCMK-1, and BW5147.3 cells prepared using NETN lysis buffer. *Antibody:* Rabbit anti-ASCL1/MASH1 recombinant monoclonal antibody [BLR164J] (A700-164 lot 1) used at 1:1000. *Secondary:* HRP-conjugated goat anti-rabbit IgG (A120-101P). Chemiluminescence with an exposure time of 3 minutes. Lower Panel: Rabbit anti-COPB2 antibody (A304-523A).

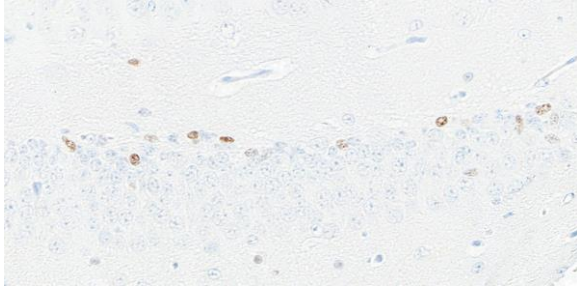


Detection of human ASCL1/MASH1 by western blot of immunoprecipitates. *Samples:* Whole cell lysate (1.0 mg per IP reaction; 20% of IP loaded) from SHP-77 cells prepared using NETN lysis buffer. *Antibodies:* Rabbit anti-ASCL1/MASH1 recombinant monoclonal antibody [BLR164J] (A700-164 lot 1) used for IP at 6 µl per reaction.

ASCL1/MASH1 was also immunoprecipitated by a second antibody against a different epitope of ASCL1/MASH1 (BL-1982A-1E8). For blotting immunoprecipitated ASCL1/MASH1, A700-164 was used at 1:1000. Chemiluminescence with an exposure time of 30 seconds.



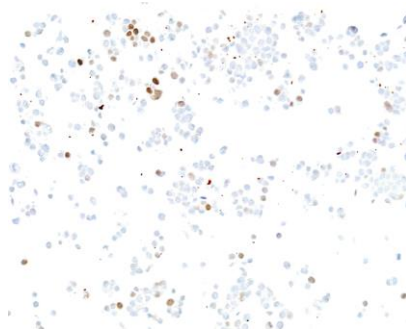
Detection of human ASCL1/MASH1 in FFPE glioblastoma by immunohistochemistry. *Antibody:* Rabbit anti-ASCL1/MASH1 recombinant monoclonal antibody [BLR164J] (A700-164 lot 1). *Secondary:* HRP-conjugated goat anti-rabbit IgG (A120-501P). *Substrate:* DAB.



Detection of mouse ASCL1/MASH1 in FFPE brain by immunohistochemistry. *Antibody:* Rabbit anti-ASCL1/MASH1 recombinant monoclonal antibody [BLR164J] (A700-164 lot 1). *Secondary:* HRP-conjugated goat anti-rabbit IgG (A120-501P). *Substrate:* DAB.



Detection of human ASCL1/MASH1 in FFPE SHP-77 cells by immunocytochemistry. *Antibody:* Rabbit anti-ASCL1/MASH1 recombinant monoclonal antibody [BLR164J] (A700-164 lot 1). *Secondary:* HRP-conjugated goat anti-rabbit IgG (A120-501P). *Substrate:* DAB.



Detection of human ASCL1/MASH1 in FFPE SK-N-Be(2) cells by immunocytochemistry. *Antibody:* Rabbit anti-ASCL1/MASH1 recombinant monoclonal antibody [BLR164J] (A700-164 lot 1). *Secondary:* HRP-conjugated goat anti-rabbit IgG (A120-501P). *Substrate:* DAB.