

Arginase 1 Monoclonal Antibody [BLR161J]

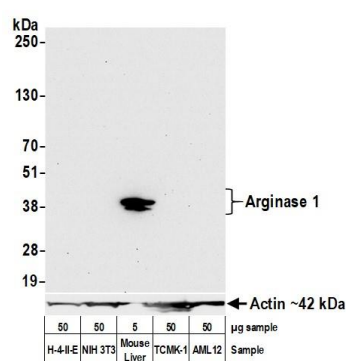
Rabbit Recombinant Monoclonal

Purified		Protein ID	NP_031508.1
Catalog No.	A700-161	GeneID	11846
Lot No.	A700-161-1		

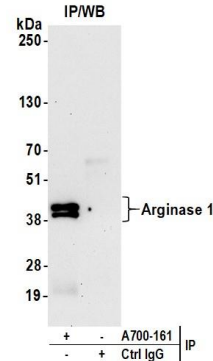


APPLICATIONS	WB, IP, IHC
SPECIES REACTIVITY	Mouse
AMOUNT	100 µl (50+ tests)
CONCENTRATION	100 µg/ml
STORAGE/SHELF LIFE	2 – 8° C / 1 year from date of receipt
PHYSICAL STATE	Liquid
BUFFER	Borate Buffered Saline (BBS) pH 8.2 with 0.1% BSA and 0.09% Sodium Azide
ISOTYPE	IgG
CLONE #	BLR161J
ORIGIN	USA
PRODUCTION PROCEDURES	Recombinant antibody was purified from cell culture supernatant. Immunogen was a recombinant protein representing full length Arginase 1.
APPLICATIONS	Centrifuge tube to remove product from lid. Optimal working dilutions should be determined experimentally by the investigator. Prepare working dilution immediately before use. Western Blot 1:1,000 Immunoprecipitation 20 µl/1 mg lysate Immunohistochemistry 1:100 to 1:500. Epitope retrieval with citrate buffer pH6.0 is recommended for FFPE tissue sections.
IHC MOUSE CONTROLS	Liver
ADDITIONAL INFO	https://www.bethyl.com/product/A700-161 Use the link above to view SDS, a current list of citations, and other product specific information.

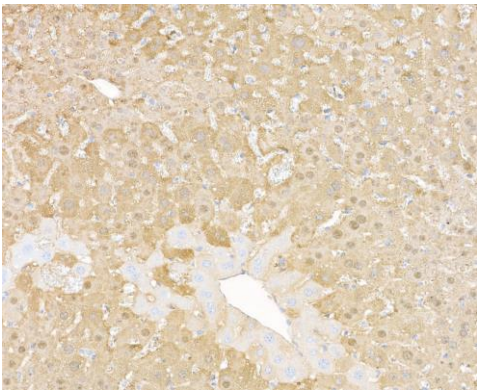
This document certifies that this product has met all of the quality control standards defined by Bethyl Laboratories, Inc.
Brian McWilliams, PhD Date: April 30, 2021



Detection of mouse Arginase 1 by western blot. *Samples:* Lysate from H-4-II-E, NIH 3T3, mouse liver, TCMK-1, and AML12 cells. *Antibody:* Rabbit anti-Arginase-1 recombinant monoclonal antibody [BLR161J] (A700-161 lot 1) used at 1:1000. *Secondary:* HRP-conjugated goat anti-rabbit IgG (A120-101P). Chemiluminescence with an exposure time of 30 seconds. Lower Panel: Rabbit anti-Actin recombinant monoclonal antibody [BLR057F] (A700-057).



Detection of mouse Arginase 1 by western blot of immunoprecipitates. *Samples:* Tissue lysate (1.0 mg per IP reaction; 20% of IP loaded) from mouse liver cells prepared using NETN lysis buffer. *Antibody:* Rabbit anti-Arginase 1 recombinant monoclonal antibody [BLR161J] (A700-161 lot 1) used at 20 µl/mg lysate. For blotting immunoprecipitated Arginase 1, A700-161 was used at 1:1000. Chemiluminescence with an exposure time of 30 seconds.



Detection of mouse Arginase 1 in FFPE mouse liver by immunohistochemistry. *Antibody:* Rabbit anti-Arginase 1 recombinant monoclonal antibody [BLR161J] (A700-161 lot 1). *Secondary:* HRP-conjugated goat anti-rabbit IgG (A120-501P). *Substrate:* DAB.