

TWIST1 Recombinant Monoclonal Antibody [BLR156J]

Rabbit Recombinant Monoclonal

Purified		Protein ID	NP_000465.1
Catalog No.	A700-156	GeneID	7291
Lot No.	A700-156-1		



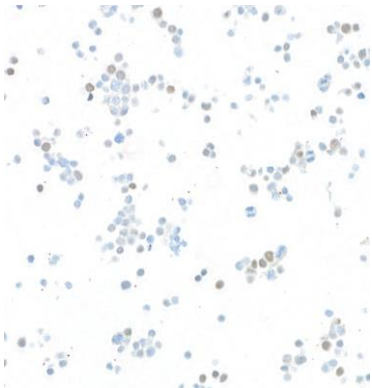
APPLICATIONS	WB, IP, ICC
SPECIES REACTIVITY	Human
AMOUNT	100 µl (50+ tests)
CONCENTRATION	250 µg/ml
STORAGE/SHELF LIFE	2 – 8° C / 1 year from date of receipt
PHYSICAL STATE	Liquid
BUFFER	Phosphate Buffered Saline (PBS) containing 0.2% BSA and 0.09% Sodium Azide
ISOTYPE	IgG
CLONE #	BLR156J
ORIGIN	USA
PRODUCTION PROCEDURES	Recombinant antibody was purified from cell culture supernatant. Immunogen was a peptide representing a region between residue 1 and 50 of human Twist-related protein 1 using the numbering given in entry NP_000465.1 (Gene ID 7291).
APPLICATIONS	Centrifuge tube to remove product from lid. Optimal working dilutions should be determined experimentally by the investigator. Prepare working dilution immediately before use. Western Blot 1:1,000 Immunoprecipitation 20 µl/1 mg lysate Immunocytochemistry 1:100 to 1:500. Epitope retrieval with citrate buffer pH6.0 is recommended for FFPE cell sections.
IHC HUMAN CONTROLS	SK-N-BE (2) Cells, SK-N-SH Cells
ADDITIONAL INFO	https://www.bethyl.com/product/A700-156 Use the link above to view SDS, a current list of citations, and other product specific information.

This document certifies that this product has met all of the quality control standards defined by Bethyl Laboratories, Inc.
Brian McWilliams, PhD Date: March 29, 2021



Detection of human TWIST1 by western blot. *Samples:* Whole cell lysate (50 µg) from SK-N-SH, HEK293T, SK-N-BE(2), HeLa, and SK-N-MC cells prepared using NETN lysis buffer. *Antibody:* Rabbit anti-TWIST1 recombinant monoclonal antibody [BLR156J] (A700-156 lot 1) used at 1:1000. *Secondary:* HRP-conjugated goat anti-rabbit IgG (A120-101P). Chemiluminescence with an exposure time of 75 seconds. Lower Panel: Rabbit anti-COPB2 antibody (A304-523A).

Detection of human TWIST1 by western blot of immunoprecipitates. *Samples:* Whole cell lysate (1.0 mg per IP reaction; 20% of IP loaded) from SK-N-SH cells prepared using NETN lysis buffer. *Antibodies:* Rabbit anti-TWIST1 recombinant monoclonal antibody [BLR156J] (A700-156 lot 1) used for IP at 20 µl/mg lysate. TWIST1 was also immunoprecipitated by a second antibody against a different epitope of TWIST1 (Antibody 2). For blotting immunoprecipitated TWIST1, A700-156 was used at 1:1000. Chemiluminescence with an exposure time of 10 seconds.



Detection of human TWIST1 in FFPE SK-N-BE(2) cells by immunocytochemistry. *Antibody:* Rabbit anti-TWIST1 recombinant monoclonal antibody [BLR156J] (A700-156 lot 1). *Secondary:* HRP-conjugated goat anti-rabbit IgG (A120-501P). *Substrate:* DAB.