

STAT6 Recombinant Monoclonal Antibody [BLR147J]

Rabbit Recombinant Monoclonal

Purified Protein ID NP_001171549.1
Catalog No. A700-147 GeneID 6778
Lot No. A700-147-1



APPLICATIONS WB, IP, IHC, ICC
SPECIES REACTIVITY Human, Mouse
AMOUNT 100 µl (50+ tests)
CONCENTRATION 300 µg/ml
STORAGE/SHELF LIFE 2 – 8° C / 1 year from date of receipt
PHYSICAL STATE Liquid
BUFFER Borate Buffered Saline (BBS) pH 8.2 with 0.1% BSA and 0.09% Sodium Azide
ISOTYPE IgG
CLONE # BLR147J
ORIGIN USA

PRODUCTION PROCEDURES Recombinant antibody was purified from cell culture supernatant.

Immunogen was a peptide representing a region between residue 600 and 650 of human Signal Transducer and Activator of Transcription 6 (STAT6) using the numbering given in entry NP_001171549.1 (Gene ID 6778).

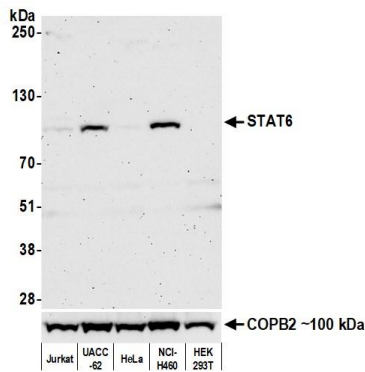
APPLICATIONS Centrifuge tube to remove product from lid. Optimal working dilutions should be determined experimentally by the investigator. Prepare working dilution immediately before use.

Western Blot 1:1,000
Immunoprecipitation 20 µl/1 mg lysate
Immunohistochemistry 1:100 to 1:500. Epitope retrieval with citrate buffer pH6.0 is recommended for FFPE tissue sections.
Immunocytochemistry 1:100 to 1:500. Epitope retrieval with citrate buffer pH6.0 is recommended for FFPE cell sections.

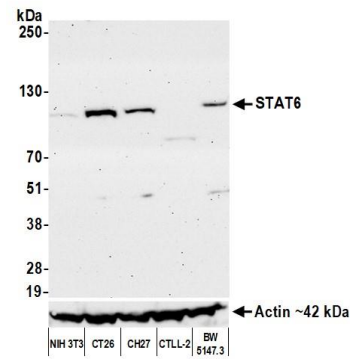
IHC HUMAN CONTROLS Breast Carcinoma, Prostate Carcinoma, HDLM-2 Cells, LNCap cells, OVCAR-3 Cells, TT Cells

ADDITIONAL INFO <https://www.bethyl.com/product/A700-147>
Use the link above to view SDS, a current list of citations, and other product specific information.

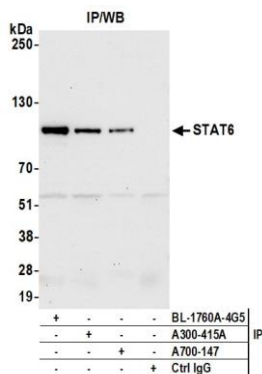
This document certifies that this product has met all of the quality control standards defined by Bethyl Laboratories, Inc.
Brian McWilliams, PhD Date: March 1, 2021



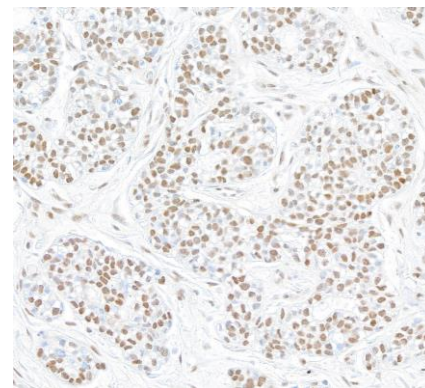
Detection of human STAT6 by western blot. *Samples:* Whole cell lysate (50 µg) from Jurkat, UACC-62, HeLa, NCI-H460, and HEK293T cells prepared using NETN lysis buffer. *Antibody:* Rabbit anti-STAT6 recombinant monoclonal antibody [BLR147J] (A700-147 lot 1) used at 1:1000. *Secondary:* HRP-conjugated goat anti-rabbit IgG (A120-101P). Chemiluminescence with an exposure time of 3 minutes. Lower Panel: Rabbit anti-COPB2 antibody (A304-523A).



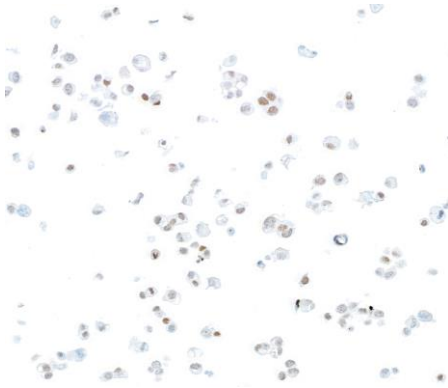
Detection of mouse STAT6 by western blot. *Samples:* Whole cell lysate (50 µg) from NIH 3T3, CT26, CH27, CTLL-2, and BW5147.3 cells prepared using NETN lysis buffer. *Antibody:* Rabbit anti-STAT6 recombinant monoclonal antibody [BLR147J] (A700-147 lot 1) used at 1:1000. *Secondary:* HRP-conjugated goat anti-rabbit IgG (A120-101P). Chemiluminescence with an exposure time of 75 seconds. Lower Panel: Rabbit anti-Actin recombinant monoclonal antibody [BLR057F] (A700-057).



Detection of human STAT6 by western blot of immunoprecipitates. *Samples:* Whole cell lysate (1.0 mg per IP reaction; 20% of IP loaded) from UACC-62 cells. *Antibodies:* Rabbit anti-STAT6 recombinant monoclonal antibody [BLR147J] (A700-147 lot 1) used for IP at 20 µl/mg lysate. STAT6 was also immunoprecipitated by other antibodies against different epitopes of STAT6 (A300-415A and BL-1760A-4G5). For blotting immunoprecipitated STAT6, A700-147 was used at 1:1000. Chemiluminescence with an exposure time of 30 seconds.



Detection of human STAT6 in FFPE breast carcinoma by immunohistochemistry. *Antibody:* Rabbit anti-STAT6 recombinant monoclonal antibody [BLR147H] (A700-147 lot 1). *Secondary:* HRP-conjugated goat anti-rabbit IgG (A120-501P). *Substrate:* DAB.



Detection of human STAT6 in FFPE OVCAR-3 cells by immunocytochemistry *Antibody:* Rabbit anti-STAT6 recombinant monoclonal antibody [BLR147H] (A700-147 lot 1). *Secondary:* HRP-conjugated goat anti-rabbit IgG (A120-501P). *Substrate:* DAB.