

# UBQLN4/CIP75/Ubiquilin 4 Recombinant Monoclonal Antibody [BLR145J]

Rabbit Recombinant Monoclonal

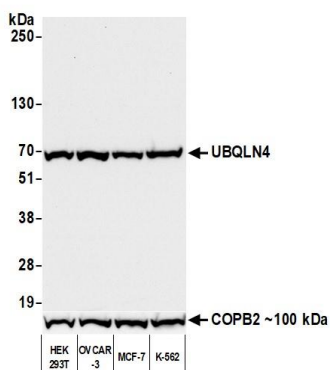
Purified Protein ID NP\_064516.2  
Catalog No. A700-145 GeneID 56893  
Lot No. A700-145-1



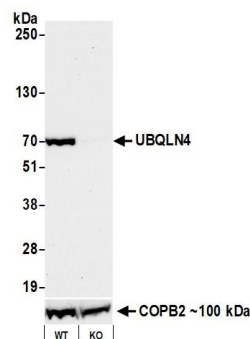
<b>APPLICATIONS</b>	WB, IP, IHC, ICC
<b>SPECIES REACTIVITY</b>	Human
<b>AMOUNT</b>	100 µl (50+ tests)
<b>CONCENTRATION</b>	50 µg/ml
<b>STORAGE/SHELF LIFE</b>	2 – 8° C / 1 year from date of receipt
<b>PHYSICAL STATE</b>	Liquid
<b>BUFFER</b>	Borate Buffered Saline (BBS) pH 8.2 with 0.1% BSA and 0.09% Sodium Azide
<b>ISOTYPE</b>	IgG
<b>CLONE #</b>	BLR145J
<b>ORIGIN</b>	USA
<b>PRODUCTION PROCEDURES</b>	Recombinant antibody was purified from cell culture supernatant.  Immunogen was a recombinant protein representing human Ubiquilin-4 (residues 2-601, NP_064516.2).
<b>APPLICATIONS</b>	Centrifuge tube to remove product from lid. Optimal working dilutions should be determined experimentally by the investigator. Prepare working dilution immediately before use.  Western Blot 1:1,000 Immunoprecipitation 20 µl/1 mg lysate Immunohistochemistry 1:100 to 1:500. Epitope retrieval with citrate buffer pH6.0 is recommended for FFPE tissue sections. Immunocytochemistry 1:100 to 1:500. Epitope retrieval with citrate buffer pH6.0 is recommended for FFPE cell sections.
<b>IHC HUMAN CONTROLS</b>	Breast Carcinoma, Colon Carcinoma, Lung Carcinoma, Ovarian Carcinoma, Malme-3M cells, MDA-MB-231 Cells, OVCAR-3 Cells, OVCAR-4 Cells, OVCAR-8 Cells, SK-N-BE (2) Cells
<b>ADDITIONAL INFO</b>	<a href="https://www.bethyl.com/product/A700-145">https://www.bethyl.com/product/A700-145</a> Use the link above to view SDS, a current list of citations, and other product specific information.

This document certifies that this product has met all of the quality control standards defined by Bethyl Laboratories, Inc.  
Brian McWilliams, PhD Date: January 29, 2021

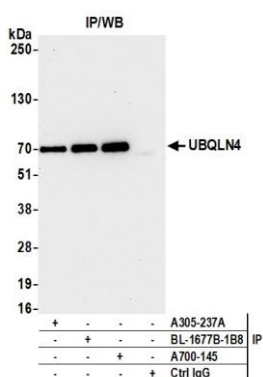
# UBQLN4/CIP75/Ubiquilin 4 Recombinant Monoclonal Antibody [B A700-145]



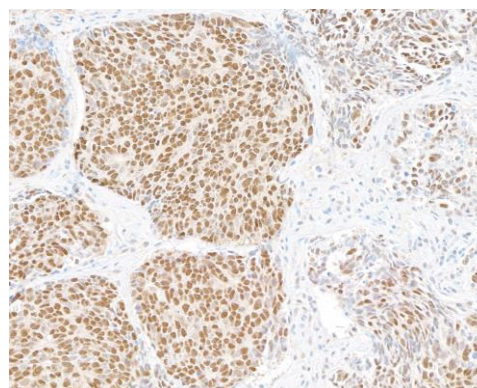
**Detection of human UBQLN4 by western blot.** *Samples:* Whole cell lysate (50  $\mu$ g) from HEK293T, OVCAR-3, MCF-7, and K-562 cells prepared using NETN lysis buffer. *Antibody:* Rabbit anti-UBQLN4 recombinant monoclonal antibody [BLR145J] (A700-145 lot 1) used at 1:1000. *Secondary:* HRP-conjugated goat anti-rabbit IgG (A120-101P). Chemiluminescence with an exposure time of 3 seconds. Lower Panel: Rabbit anti-COPB2 antibody (A304-523A).



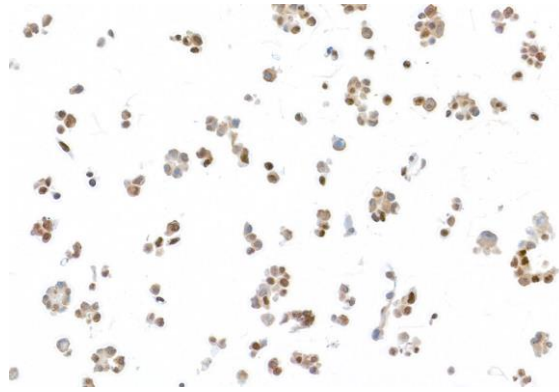
**Detection of human UBQLN4 by western blot.** *Samples:* Whole cell lysate (50  $\mu$ g) prepared using NETN buffer from MDA-MB-231 cells (WT and KO). *Antibodies:* Rabbit anti-UBQLN4 recombinant monoclonal antibody [BLR145J] (A700-145 lot 1) used for WB at 1:1000. *Secondary:* HRP-conjugated goat anti-rabbit IgG (A120-101P). Chemiluminescence with an exposure time of 30 seconds. Lower Panel: Rabbit anti-COPB2 antibody (A304-523A). (*KO cells: Jachimowicz et al, Cell, 2019*).



**Detection of human UBQLN4 by western blot of immunoprecipitates.** *Samples:* Whole cell lysate (1.0 mg per IP reaction; 20% of IP loaded) from HEK293T cells prepared using NETN lysis buffer. *Antibodies:* Rabbit anti-UBQLN4 recombinant monoclonal antibody [BLR145J] (A700-145 lot 1) used for IP at 20  $\mu$ l/mg lysate. UBQLN4 was also immunoprecipitated by others rabbit anti-UBQLN4 antibodies (A305-237A and BL-1677B-1B8). For blotting immunoprecipitated UBQLN4, A700-145 was used at 1:1000. Chemiluminescence with an exposure time of 10 seconds.



**Detection of human UBQLN4 in FFPE lung carcinoma by immunohistochemistry.** *Antibody:* Rabbit anti-UBQLN4 recombinant monoclonal antibody [BLR145J] (A700-145 lot 1). *Secondary:* HRP-conjugated goat anti-rabbit IgG (A120-501P). *Substrate:* DAB.



**Detection of human UBQLN4 in FFPE Ovar-4 cells by immunocytochemistry.** *Antibody:* Rabbit anti-UBQLN4 recombinant monoclonal antibody [BLR145J] (A700-145 lot 1). *Secondary:* HRP-conjugated goat anti-rabbit IgG (A120-501P). *Substrate:* DAB.