

PMS2 Recombinant Monoclonal Antibody [BLR142H]

Rabbit Recombinant Monoclonal

Purified Protein ID NP_000526.2
Catalog No. A700-142 GeneID 5395
Lot No. A700-142-1



APPLICATIONS WB, IP
SPECIES REACTIVITY Human
AMOUNT 100 µl (10 blots)
CONCENTRATION 10 µg/ml
STORAGE/SHELF LIFE 2 – 8° C / 1 year from date of receipt
PHYSICAL STATE Liquid
BUFFER Borate Buffered Saline (BBS) pH 8.2 with 0.1% BSA and 0.09% Sodium Azide
ISOTYPE IgG
CLONE # BLR142H
ORIGIN USA
PRODUCTION PROCEDURES Recombinant antibody was purified from cell culture supernatant.

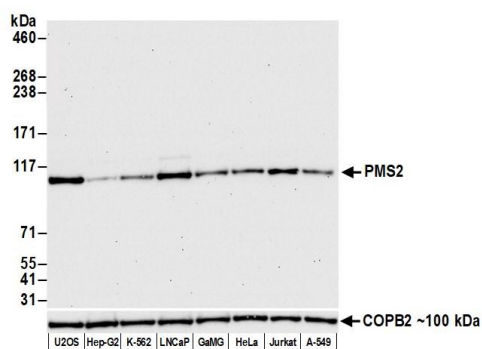
Immunogen was a peptide representing a region between residue 550 and 600 of human mismatch repair endonuclease PMS2 using the numbering given in entry NP_000526.2 (Gene ID 5395).

APPLICATIONS Centrifuge tube to remove product from lid. Optimal working dilutions should be determined experimentally by the investigator. Prepare working dilution immediately before use.

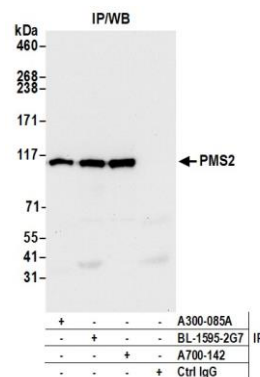
Western Blot 1:1,000
Immunoprecipitation 20 µl/1 mg lysate

ADDITIONAL INFO <https://www.bethyl.com/product/A700-142>
Use the link above to view SDS, a current list of citations, and other product specific information.

This document certifies that this product has met all of the quality control standards defined by Bethyl Laboratories, Inc.
Brian McWilliams, PhD Date: December 9, 2020



Detection of human PMS2 by western blot. *Samples:* Whole cell lysate (25 µg) from U2OS, Hep-G2, K-562, LNCaP, GaMG, HeLa, Jurkat, and A-549 cells prepared using NETN lysis buffer. *Antibody:* Rabbit anti-PMS2 recombinant monoclonal antibody [BLR142H] (A700-142 lot 1) used at 1:1000. *Secondary:* HRP-conjugated goat anti-rabbit IgG (A120-101P). Chemiluminescence with an exposure time of 30 seconds. Lower Panel: Rabbit anti-COPB2 antibody (A304-523A).



Detection of human PMS2 by western blot of immunoprecipitates. *Samples:* Whole cell lysate (1.0 mg per IP reaction; 20% of IP loaded) from U2OS cells prepared using NETN lysis buffer. *Antibodies:* Rabbit anti-PMS2 recombinant monoclonal antibody [BLR142H] (A700-142 lot 1) used for IP at 20 µl/mg lysate. PMS2 was also immunoprecipitated by PMS2 antibodies, BL-1595-2G7 and A300-085A. For blotting immunoprecipitated PMS2, A700-142 was used at 1:1000. Chemiluminescence with an exposure time of 30 seconds.