

MACC1 Recombinant Monoclonal Antibody [BLR135H]

Rabbit Recombinant Monoclonal

Purified Protein ID NP_877439.3
Catalog No. A700-135 GeneID 346389
Lot No. A700-135-1



APPLICATIONS WB, IP, IHC, ICC
SPECIES REACTIVITY Human
AMOUNT 100 µl (50+ tests)
CONCENTRATION 250 µg/ml
STORAGE/SHELF LIFE 2 – 8° C / 1 year from date of receipt
PHYSICAL STATE Liquid
BUFFER Borate Buffered Saline (BBS) pH 8.2 with 0.1% BSA and 0.09% Sodium Azide
ISOTYPE IgG
CLONE # BLR135H
ORIGIN USA
PRODUCTION PROCEDURES Recombinant antibody was purified from cell culture supernatant.

Immunogen was a peptide representing a region between residue 100 and 150 of human Metastasis-associated in colon cancer protein 1 using the numbering given in entry NP_877439.3 (Gene ID 346389).

APPLICATIONS Centrifuge tube to remove product from lid. Optimal working dilutions should be determined experimentally by the investigator. Prepare working dilution immediately before use.

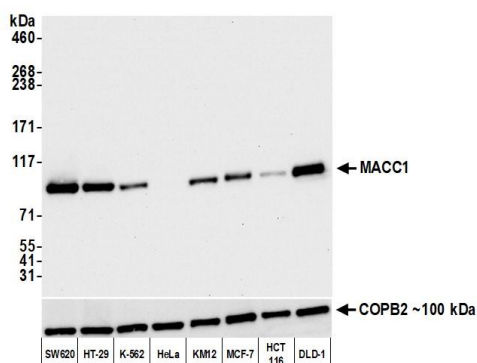
Western Blot 1:1,000
Immunoprecipitation 20 µl/1 mg lysate
Immunohistochemistry 1:100 to 1:500. Epitope retrieval with citrate buffer pH6.0 is recommended for FFPE tissue sections.
Immunocytochemistry 1:100 to 1:500. Epitope retrieval with citrate buffer pH6.0 is recommended for FFPE cell sections.

IHC HUMAN CONTROLS Bladder Cell Carcinoma, Colon Carcinoma, Ovarian Carcinoma, C5/MJ Cells, HCT 116 Cells, HT-29 Cells, OVCAR-3 Cells, SW620 Cells

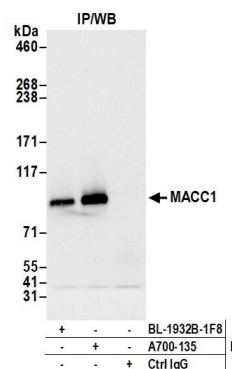
ADDITIONAL INFO <https://www.bethyl.com/product/A700-135>

Use the link above to view SDS, a current list of citations, and other product specific information.

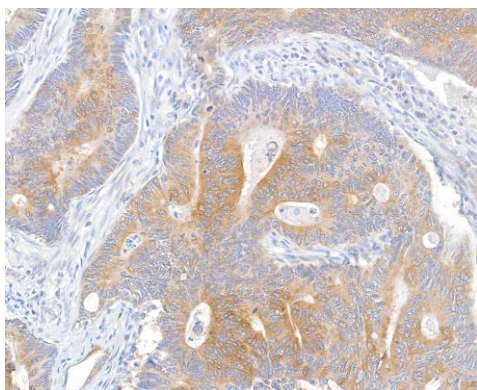
This document certifies that this product has met all of the quality control standards defined by Bethyl Laboratories, Inc.
Brian McWilliams, PhD Date: November 23, 2020



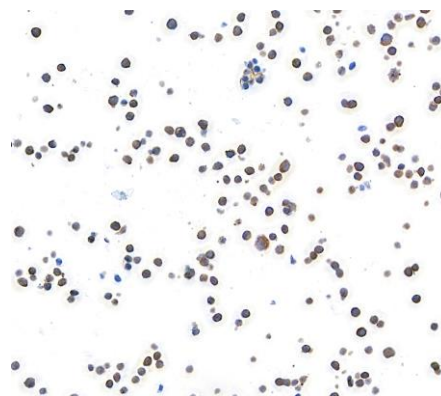
Detection of human MACC1 by western blot. *Samples:* Whole cell lysate (10 µg) from SW620, HT-29, K-562, HeLa, KM12, MCF-7, HCT 116, and DLD-1 cells prepared using NETN lysis buffer. *Antibody:* Rabbit anti-MACC1 recombinant monoclonal antibody [BLR135H] (A700-135 Lot 1) used at 1:1000. *Secondary:* HRP-conjugated goat anti-rabbit IgG (A120-101P). Chemiluminescence with an exposure time of 10 seconds. Lower Panel: Rabbit anti-COPB2 antibody (A304-523A).



Detection of human MACC1 by western blot of immunoprecipitates. *Samples:* Whole cell lysate (1.0 mg per IP reaction; 20% of IP loaded) from SW-620 cells prepared using NETN lysis buffer. *Antibodies:* Rabbit anti-MACC1 recombinant monoclonal antibody [BLR135H] (A700-135 Lot 1) used for IP at 20 µl/mg lysate. MACC1 was also immunoprecipitated by rabbit anti-MACC1 antibody BL-1932B-1F8. For blotting immunoprecipitated MACC1, A700-135 was used at 1:1000. Chemiluminescence with an exposure time of 3 seconds.



Detection of human MACC1 in FFPE colon carcinoma by immunohistochemistry. *Antibody:* Rabbit anti-MACC1 recombinant monoclonal antibody [BLR135H] (A700-135 Lot 1). *Secondary:* HRP-conjugated goat anti-rabbit IgG (A120-501P). *Substrate:* DAB.



Detection of human MACC1 in FFPE SW620 cells by immunocytochemistry. *Antibody:* Rabbit anti-MACC1 recombinant monoclonal antibody [BLR135H] (A700-135 Lot 1). *Secondary:* HRP-conjugated goat anti-rabbit IgG (A120-501P). *Substrate:* DAB.