

FOXP1 Recombinant Monoclonal Antibody [BLR134H]

Rabbit Recombinant Monoclonal

Purified Protein ID NP_001336267.1
Catalog No. A700-134 GeneID 27086
Lot No. A700-134-1



APPLICATIONS WB, IP, IHC, ICC
SPECIES REACTIVITY Human, Mouse
AMOUNT 100 µl (50+ tests)
CONCENTRATION 30 µg/ml
STORAGE/SHELF LIFE 2 – 8° C / 1 year from date of receipt
PHYSICAL STATE Liquid
BUFFER Borate Buffered Saline (BBS) pH 8.2 with 0.1% BSA and 0.09% Sodium Azide
ISOTYPE IgG
CLONE # BLR134H
ORIGIN USA
PRODUCTION PROCEDURES Recombinant antibody was purified from cell culture supernatant.

Immunogen was a peptide representing a region between residue 627 and the C-terminus (residue 677) of human Forkhead box protein P1 using the numbering given in entry NP_001336267.1 (Gene ID 27086).

APPLICATIONS Centrifuge tube to remove product from lid. Optimal working dilutions should be determined experimentally by the investigator. Prepare working dilution immediately before use.

Western Blot 1:1,000
Immunoprecipitation 20 µl/1 mg lysate
Immunohistochemistry 1:100 to 1:500. Epitope retrieval with citrate buffer pH6.0 is recommended for FFPE tissue sections.
Immunocytochemistry 1:100 to 1:500. Epitope retrieval with citrate buffer pH6.0 is recommended for FFPE cell sections.

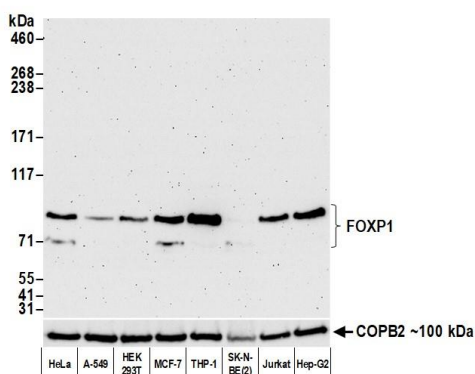
IHC HUMAN CONTROLS Breast, Breast Carcinoma, Burkitt lymphoma, Colon Carcinoma, Ovarian Carcinoma, Prostate Carcinoma, Testis, Tonsil, HEK293T Cells, HeLa Cells, Hep-G2 Cells, Jurkat Cells, LNCap cells, MCF-7 Cells, SK-N-BE (2) Cells, THP-1 cells

IHC MOUSE CONTROLS RenCa Cells

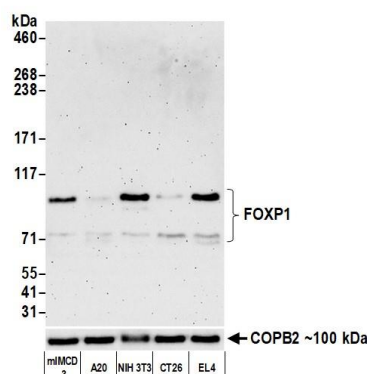
ADDITIONAL INFO <https://www.bethyl.com/product/A700-134>

Use the link above to view SDS, a current list of citations, and other product specific information.

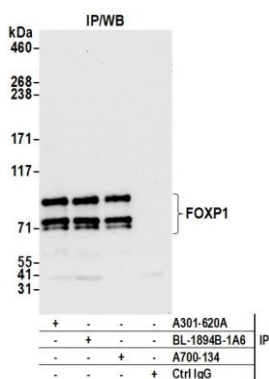
This document certifies that this product has met all of the quality control standards defined by Bethyl Laboratories, Inc.
Brian McWilliams, PhD Date: November 23, 2020



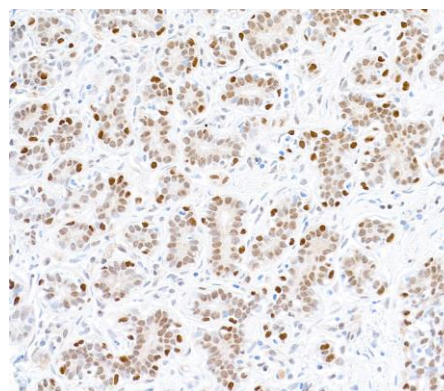
Detection of human FOXP1 by western blot. *Samples:* Whole cell lysate (50 µg) from HeLa, A-549, HEK293T, MCF-7, THP-1, SK-N-BE(2), Jurkat, and Hep-G2 cells prepared using NETN lysis buffer. *Antibody:* Rabbit anti-FOXP1 recombinant monoclonal antibody [BLR134H] (A700-134 lot 1) used at 1:1000. *Secondary:* HRP-conjugated goat anti-rabbit IgG (A120-101P). Chemiluminescence with an exposure time of 30 seconds. Lower Panel: Rabbit anti-COPB2 antibody (A304-523A).



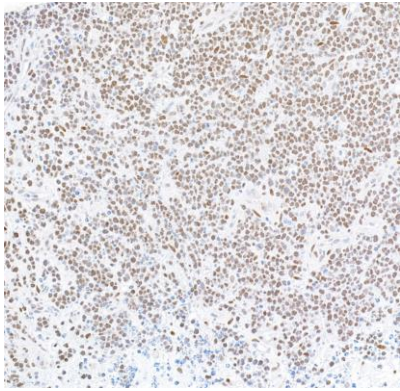
Detection of mouse FOXP1 by western blot. *Samples:* Whole cell lysate (25 µg) from m1MCD-3, A20, NIH 3T3, CT26, and EL4 cells prepared using NETN lysis buffer. *Antibody:* Rabbit anti-FOXP1 recombinant monoclonal antibody [BLR134H] (A700-134 lot 1) used at 1:1000. *Secondary:* HRP-conjugated goat anti-rabbit IgG (A120-101P). Chemiluminescence with an exposure time of 30 seconds. Lower Panel: Rabbit anti-COPB2 antibody (A304-523A).



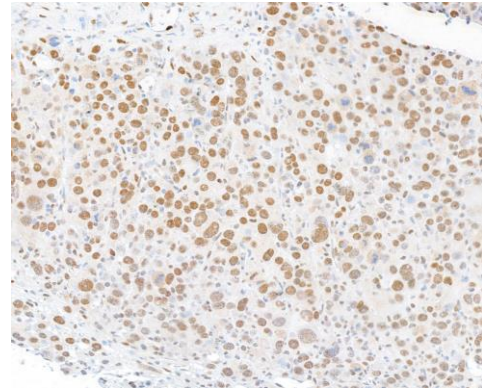
Detection of human FOXP1 by western blot of immunoprecipitates. *Samples:* Whole cell lysate (1.0 mg per IP reaction; 20% of IP loaded) from HeLa cells prepared using NETN lysis buffer. *Antibodies:* Rabbit anti-FOXP1 recombinant monoclonal antibody [BLR134H] (A700-134 lot 1) used for IP at 20 µl/mg lysate. FOXP1 was also immunoprecipitated by anti-FOXP1 antibodies BL-1894B-1A6 and A301-620A. For blotting immunoprecipitated FOXP1, A700-134 was used at 1:1000. Chemiluminescence with an exposure time of 10



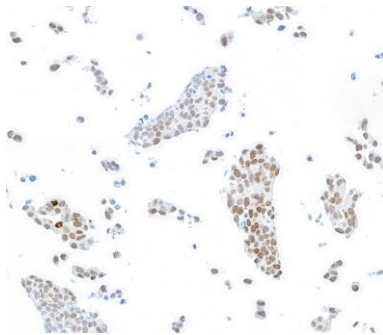
Detection of human FOXP1 in FFPE breast carcinoma by immunohistochemistry. *Antibody:* Rabbit anti-FOXP1 recombinant monoclonal antibody [BLR134H] (A700-134 Lot 1). *Secondary:* HRP-conjugated goat anti-rabbit IgG (A120-501P). *Substrate:* DAB.



Detection of human FOXP1 in FFPE Burkitt lymphoma by immunohistochemistry. *Antibody:* Rabbit anti-FOXP1 recombinant monoclonal antibody [BLR134H] (A700-134 Lot 1). *Secondary:* HRP-conjugated goat anti-rabbit IgG (A120-501P). *Substrate:* DAB.



Detection of mouse FOXP1 in FFPE renal cell carcinoma by immunohistochemistry. *Antibody:* Rabbit anti-FOXP1 recombinant monoclonal antibody [BLR134H] (A700-134 Lot 1). *Secondary:* HRP-conjugated goat anti-rabbit IgG (A120-501P). *Substrate:* DAB.



Detection of human FOXP1 in FFPE LNCaP cells by immunocytochemistry. *Antibody:* Rabbit anti-FOXP1 recombinant monoclonal antibody [BLR134H] (A700-134 Lot 1). *Secondary:* HRP-conjugated goat anti-rabbit IgG (A120-501P). *Substrate:* DAB.