

Lasu1/Ureb1 Recombinant Monoclonal Antibody [BLR129H]

Rabbit Recombinant Monoclonal

Purified Protein ID NP_113584.3
Catalog No. A700-129 GeneID 10075
Lot No. A700-129-1



APPLICATIONS WB, IP, IHC, ICC
SPECIES REACTIVITY Human, Mouse
AMOUNT 100 µl (50+ tests)
CONCENTRATION 10 µg/ml
STORAGE/SHELF LIFE 2 – 8° C / 1 year from date of receipt
PHYSICAL STATE Liquid
BUFFER Borate Buffered Saline (BBS) pH 8.2 with 0.1% BSA and 0.09% Sodium Azide
ISOTYPE IgG
CLONE # BLR129H
ORIGIN USA
PRODUCTION PROCEDURES Recombinant antibody was purified from cell culture supernatant.

Immunogen was a peptide representing a region between residue 2250 and 2300 of human E3 ubiquitin-protein ligase HUWE1 (aka Lasu1, Ureb1) using the numbering given in entry NP_113584.3 (Gene ID 10075).

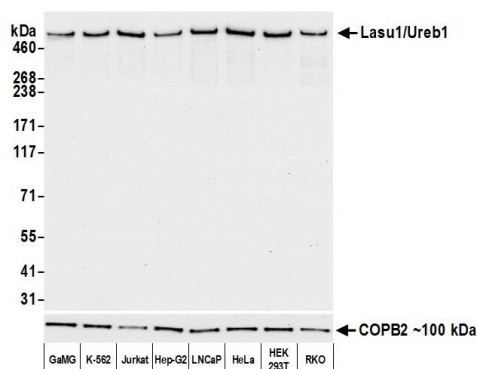
APPLICATIONS Centrifuge tube to remove product from lid. Optimal working dilutions should be determined experimentally by the investigator. Prepare working dilution immediately before use.

Western Blot 1:1,000
Immunoprecipitation 20 µl/1 mg lysate
Immunohistochemistry 1:100 to 1:500. Epitope retrieval with citrate buffer pH6.0 is recommended for FFPE tissue sections.
Immunocytochemistry 1:100 to 1:500. Epitope retrieval with citrate buffer pH6.0 is recommended for FFPE cell sections.

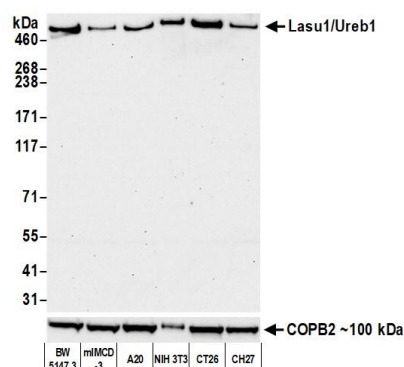
IHC HUMAN CONTROLS Breast Carcinoma, Colon Carcinoma, Head and Neck Squamous Cell Carcinoma, Lung Carcinoma, Ovarian Carcinoma, Placenta, Seminoma, Skin Squamous Cell Carcinoma, Tonsil, HEK293T Cells, HeLa Cells, OVCAR-3 Cells, SiHa cells

ADDITIONAL INFO <https://www.bethyl.com/product/A700-129>
Use the link above to view SDS, a current list of citations, and other product specific information.

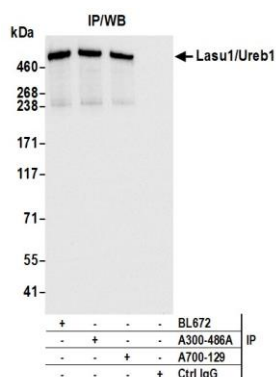
This document certifies that this product has met all of the quality control standards defined by Bethyl Laboratories, Inc.
Brian McWilliams, PhD Date: November 23, 2020



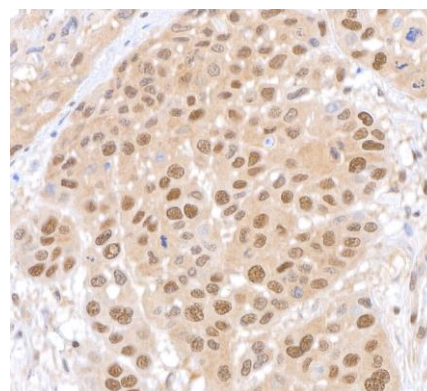
Detection of human Lasu1/Ureb1 by western blot.
Samples: Whole cell lysate (2 µg) from GaMG, K-562, Jurkat, Hep-G2, LNCaP, HeLa, HEK293T, and RKO cells prepared using NETN lysis buffer. **Antibody:** Rabbit anti-Lasu1/Ureb1 recombinant monoclonal antibody [BLR129H] (A700-129 Lot 1) used at 1:1000. **Secondary:** HRP-conjugated goat anti-rabbit IgG (A120-101P). Chemiluminescence with an exposure time of 10 seconds.
 Lower Panel: Rabbit anti-COPB2 antibody (A304-523A).



Detection of mouse Lasu1/Ureb1 by western blot.
Samples: Whole cell lysate (20 µg) from BW5147.3, mIMCD-3, A20, NIH 3T3, CT26, and CH27 cells prepared using NETN lysis buffer. **Antibody:** Rabbit anti-Lasu1/Ureb1 recombinant monoclonal antibody [BLR129H] (A700-129 Lot 1) used at 1:1000. **Secondary:** HRP-conjugated goat anti-rabbit IgG (A120-101P). Chemiluminescence with an exposure time of 30 seconds.
 Lower Panel: Rabbit anti-COPB2 antibody (A304-523A).



Detection of human Lasu1/Ureb1 by western blot of immunoprecipitates. **Samples:** Whole cell lysate (1 mg for IP; 5% of IP loaded) from HeLa cells prepared using NETN lysis buffer. **Antibodies:** Rabbit anti-Lasu1/Ureb1 recombinant monoclonal antibody [BLR129H] (A700-129 Lot 1) used for IP at 20 µl/mg lysate. Lasu1/Ureb1 was also immunoprecipitated by other Lasu1/Ureb1 antibodies A300-486A and BL672. For blotting immunoprecipitated Lasu1-Ureb1, A700-129 was used at 1:1000. Chemiluminescence with an exposure time of 3 seconds.



Detection of human Lasu1/Ureb1 in FFPE head & neck SCC by immunohistochemistry. **Antibody:** Rabbit anti-Lasu1/Ureb1 recombinant monoclonal antibody [BLR129H] (A700-129 Lot 1). **Secondary:** HRP-conjugated goat anti-rabbit IgG (A120-501P). **Substrate:** DAB.



Detection of human Lasu1/Ureb1 in FFPE SiHa cells by immunocytochemistry. *Antibody:* Rabbit anti-Lasu1/Ureb1 recombinant monoclonal antibody [BLR129H] (A700-129 Lot 1). *Secondary:* HRP-conjugated goat anti-rabbit IgG (A120-501P). *Substrate:* DAB.