

# CD31 /PECAM-1 Recombinant Monoclonal Antibody [BLR127H]

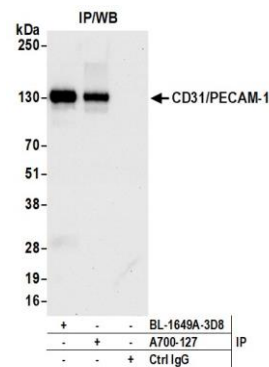
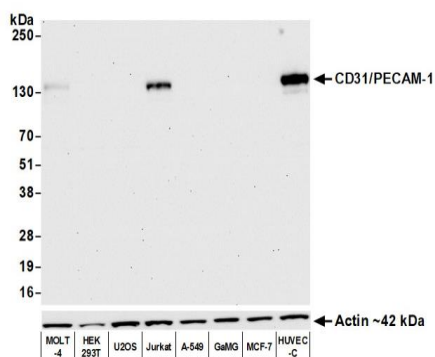
Rabbit Recombinant Monoclonal

Purified Protein ID NP\_000433.4  
Catalog No. A700-127 GeneID 5175  
Lot No. A700-127-1



<b>APPLICATIONS</b>	WB, IP, IHC, ICC
<b>SPECIES REACTIVITY</b>	Human
<b>AMOUNT</b>	100 µl (50+ tests)
<b>CONCENTRATION</b>	1000 µg/ml
<b>STORAGE/SHELF LIFE</b>	2 - 8° C / 1 year from date of receipt
<b>PHYSICAL STATE</b>	Liquid
<b>BUFFER</b>	Borate Buffered Saline (BBS) pH 8.2 with 0.09% Sodium Azide, BSA Free
<b>ISOTYPE</b>	IgG
<b>CLONE #</b>	BLR127H
<b>ORIGIN</b>	USA
<b>PRODUCTION PROCEDURES</b>	Recombinant antibody was purified from cell culture supernatant.  Immunogen was a recombinant protein representing the extracellular domain of human Platelet endothelial cell adhesion molecule (aka CD31, residues 28-610, NP_000433.4).
<b>APPLICATIONS</b>	Centrifuge tube to remove product from lid. Optimal working dilutions should be determined experimentally by the investigator. Prepare working dilution immediately before use.  Western Blot 1:1,000 Immunoprecipitation 6 µl/1 mg lysate Immunohistochemistry 1:100 to 1:500. Epitope retrieval with citrate buffer pH6.0 is recommended for FFPE tissue sections. Immunocytochemistry 1:100 to 1:500. Epitope retrieval with citrate buffer pH6.0 is recommended for FFPE cell sections.
<b>IHC HUMAN CONTROLS</b>	Breast Carcinoma, Liver, Placenta, Prostate Carcinoma, Jurkat Cells, K-562 Cells, MUTZ-3 cells, THP-1 cells, UT-7 cells
<b>ADDITIONAL INFO</b>	<a href="https://www.bethyl.com/product/A700-127">https://www.bethyl.com/product/A700-127</a> Use the link above to view SDS, a current list of citations, and other product specific information.

This document certifies that this product has met all of the quality control standards defined by Bethyl Laboratories, Inc.  
Brian McWilliams, PhD Date: November 3, 2020

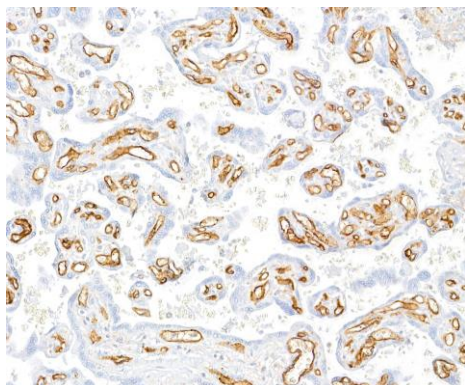


#### Detection of human CD31/PECAM-1 by western blot.

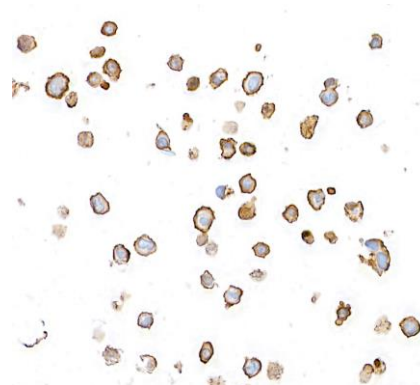
**Samples:** Whole cell lysate (10 µg) from MOLT-4, HEK293T, U2OS, Jurkat, A-549, GaMG, MCF-7, and HUVEC-C cells prepared using NETN lysis buffer. **Antibody:** Rabbit anti-CD31/PECAM-1 recombinant monoclonal antibody [BLR127H] (A700-127 lot 1) used at 1:1000. **Secondary:** HRP-conjugated goat anti-rabbit IgG (A120-101P). Chemiluminescence with an exposure time of 30 seconds.

#### Detection of human CD31/PECAM-1 by western blot of immunoprecipitates.

**Samples:** Whole cell lysate (1.0 mg per IP reaction; 20% of IP loaded) from Jurkat cells prepared using NETN lysis buffer. **Antibodies:** Rabbit anti-CD31/PECAM-1 recombinant monoclonal antibody [BLR127H] (A700-127 lot 1) used for IP at 6 µl per reaction. CD31/PECAM-1 was also immunoprecipitated by rabbit anti-CD31/PECAM-1 antibody BL-1649A-3D8. For blotting immunoprecipitated CD31/PECAM-1, A700-127 was used at 1:1000. Chemiluminescence with an exposure time of 3 seconds.



**Detection of human CD31/PECAM-1 in FFPE placenta by immunohistochemistry.** **Antibody:** Rabbit anti-CD31/PECAM-1 recombinant monoclonal antibody [BLR127H] (A700-127 lot 1). **Secondary:** HRP-conjugated goat anti-rabbit IgG (A120-501P). **Substrate:** DAB.



**Detection of human CD31/PECAM-1 in FFPE THP-1 cells by immunocytochemistry.** **Antibody:** Rabbit anti-CD31/PECAM-1 recombinant monoclonal antibody [BLR127H] (A700-127 lot 1). **Secondary:** HRP-conjugated goat anti-rabbit IgG (A120-501P). **Substrate:** DAB.