

CD38 Recombinant Monoclonal Antibody [BLR123H]

Rabbit Recombinant Monoclonal

Purified Protein ID NP_001766.2
Catalog No. A700-123 GeneID 952
Lot No. A700-123-1



APPLICATIONS WB, IP, IHC, ICC
SPECIES REACTIVITY Human
AMOUNT 100 µl (50+ tests)
CONCENTRATION 50 µg/ml
STORAGE/SHELF LIFE 2 – 8° C / 1 year from date of receipt
PHYSICAL STATE Liquid
BUFFER Borate Buffered Saline (BBS) pH 8.2 with 0.1% BSA and 0.09% Sodium Azide
ISOTYPE IgG
CLONE # BLR123H
ORIGIN USA

PRODUCTION PROCEDURES Recombinant antibody was purified from cell culture supernatant.

Immunogen was a recombinant protein representing the extracellular domain of human ADP-ribosyl cyclase/cyclic ADP-ribose hydrolase 1 (aka CD38, residues 43-300, NP_001766.2).

APPLICATIONS Centrifuge tube to remove product from lid. Optimal working dilutions should be determined experimentally by the investigator. Prepare working dilution immediately before use.

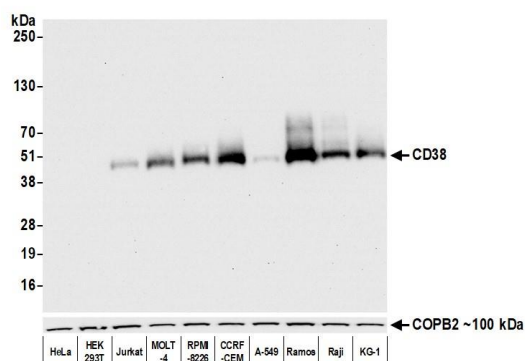
Western Blot 1:1,000
Immunoprecipitation 20 µl/1 mg lysate
Immunohistochemistry 1:100 to 1:500. Epitope retrieval with citrate buffer pH6.0 is recommended for FFPE tissue sections.
Immunocytochemistry 1:100 to 1:500. Epitope retrieval with citrate buffer pH6.0 is recommended for FFPE cell sections.

IHC HUMAN CONTROLS Breast Carcinoma, Colon Carcinoma, Gastric Carcinoma, Lung Carcinoma, Melanoma, Non-Hodgkins Lymphoma, Testicular Seminoma, Tonsil, A-549 Cells, CCRF-CEM cells, Daudi Cells, Jurkat Cells, JVM-2 cells, MOLT-4 Cells, Raji Cells, Ramos Cells

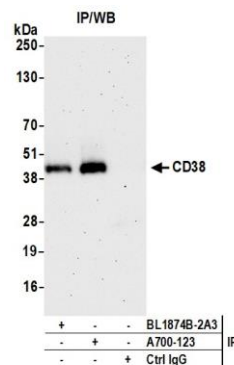
ADDITIONAL INFO <https://www.bethyl.com/product/A700-123>

Use the link above to view SDS, a current list of citations, and other product specific information.

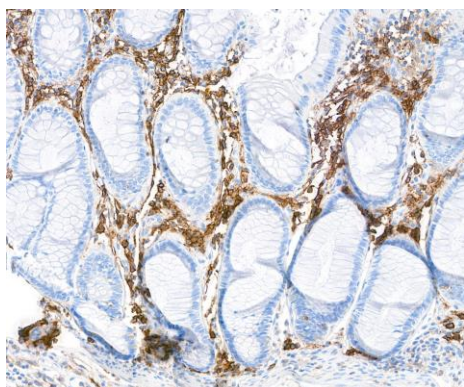
This document certifies that this product has met all of the quality control standards defined by Bethyl Laboratories, Inc.
Eric McIntush, PhD | Chief Scientific Officer Date: August 31, 2020



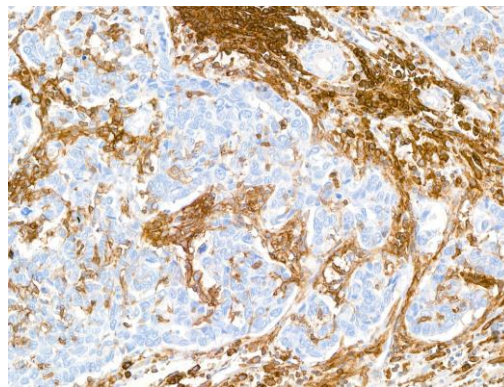
Detection of human CD38 by western blot. *Samples:* Whole cell lysate (10 µg) from HeLa, HEK293T, Jurkat, MOLT-4, RPMI-8226, CCRF-CEM, A-549, Ramos, Raji, and KG-1 cells prepared using NETN lysis buffer. *Antibody:* Rabbit anti-CD38 recombinant monoclonal antibody [BLR123H] (A700-123 lot 1) used at 1:1000. *Secondary:* HRP-conjugated goat anti-rabbit IgG (A120-101P). Chemiluminescence with an exposure time of 10 seconds. Lower Panel: Rabbit anti-COPB2 antibody (A304-523A).



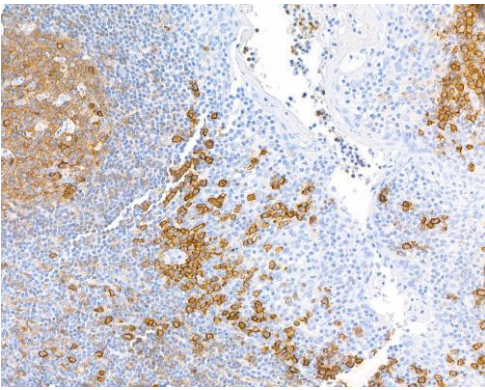
Detection of human CD38 by western blot of immunoprecipitates. *Samples:* Whole cell lysate (1.0 mg per IP reaction; 2% of IP loaded) from Ramos cells prepared using NETN lysis buffer. *Antibodies:* Rabbit anti-CD38 recombinant monoclonal antibody [BLR123H] (A700-123 lot 1) used for IP at 20 µl/mg lysate. CD38 was also immunoprecipitated by rabbit anti-CD38 antibody BL1874B-2A3. For blotting immunoprecipitated CD38, A700-123 was used at 1:1000. Chemiluminescence with an exposure time of 75 seconds.



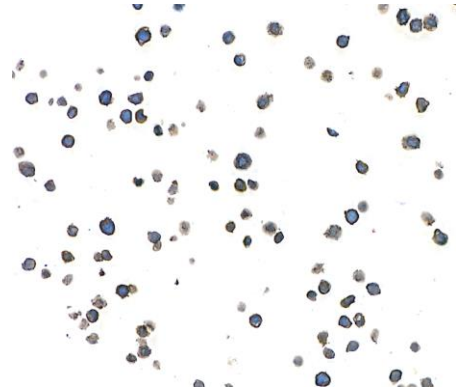
Detection of human CD38 in FFPE colon carcinoma by immunohistochemistry. *Antibody:* Rabbit anti-CD38 recombinant monoclonal antibody [BLR123H] (A700-123 Lot 1). *Secondary:* HRP-conjugated goat anti-rabbit IgG (A120-501P). *Substrate:* DAB.



Detection of human CD38 in FFPE breast carcinoma by immunohistochemistry. *Antibody:* Rabbit anti-CD38 recombinant monoclonal antibody [BLR123H] (A700-123 Lot 1). *Secondary:* HRP-conjugated goat anti-rabbit IgG (A120-501P). *Substrate:* DAB.



Detection of human CD38 in FFPE tonsil by immunohistochemistry. *Antibody:* Rabbit anti-CD38 recombinant monoclonal antibody [BLR123H] A700-123 Lot 1). *Secondary:* HRP-conjugated goat anti-rabbit IgG (A120-501P). *Substrate:* DAB.



Detection of human CD38 in FFPE CCRF-CEM cells by immunocytochemistry. *Antibody:* Rabbit anti-CD38 recombinant monoclonal antibody [BLR123H] (A700-123 Lot 1). *Secondary:* HRP-conjugated goat anti-rabbit IgG (A120-501P). *Substrate:* DAB.