

RUNX3 Recombinant Monoclonal Antibody [BLR122H]

Rabbit Recombinant Monoclonal

Purified Protein ID NP_004341.1
Catalog No. A700-122 GeneID 864
Lot No. A700-122-1



APPLICATIONS WB, IP, IHC, ICC
SPECIES REACTIVITY Human
AMOUNT 100 µl (50+ tests)
CONCENTRATION 100 µg/ml
STORAGE/SHELF LIFE 2 – 8° C / 1 year from date of receipt
PHYSICAL STATE Liquid
BUFFER Borate Buffered Saline (BBS) pH 8.2 with 0.1% BSA and 0.09% Sodium Azide
ISOTYPE IgG
CLONE # BLR122H
ORIGIN USA
PRODUCTION PROCEDURES Recombinant antibody was purified from cell culture supernatant.

Immunogen was a peptide representing a region between residue 1 and 50 of human runt-related transcription factor 3 using the numbering given in entry NP_004341.1 (Gene ID 864).

APPLICATIONS Centrifuge tube to remove product from lid. Optimal working dilutions should be determined experimentally by the investigator. Prepare working dilution immediately before use.

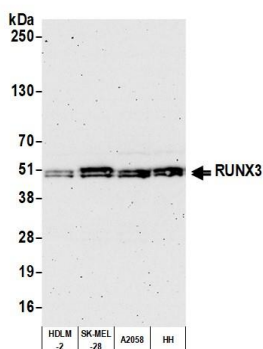
Western Blot 1:1,000
Immunoprecipitation 20 µl/1 mg lysate
Immunohistochemistry 1:100 to 1:500. Epitope retrieval with citrate buffer pH6.0 is recommended for FFPE tissue sections.
Immunocytochemistry 1:100 to 1:500. Epitope retrieval with citrate buffer pH6.0 is recommended for FFPE cell sections.

IHC HUMAN CONTROLS Breast Carcinoma, Gastric Carcinoma, Hodgkins Lymphoma, Lymph Node, Non-Hodgkins Lymphoma, Tonsil, HDLM-2 Cells, SK-MEL-28 Cells

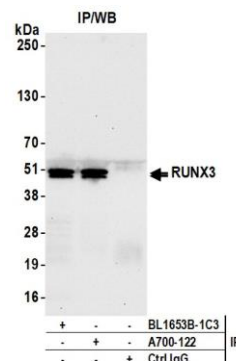
ADDITIONAL INFO <https://www.bethyl.com/product/A700-122>

Use the link above to view SDS, a current list of citations, and other product specific information.

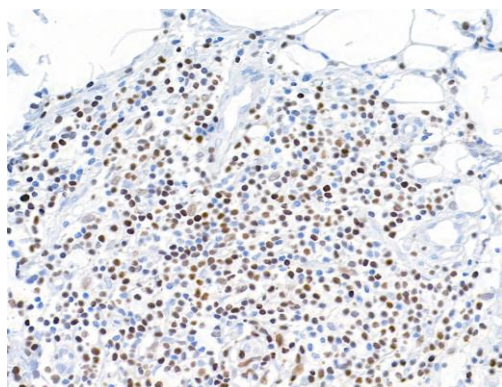
This document certifies that this product has met all of the quality control standards defined by Bethyl Laboratories, Inc.
Eric McIntush, PhD | Chief Scientific Officer Date: August 31, 2020



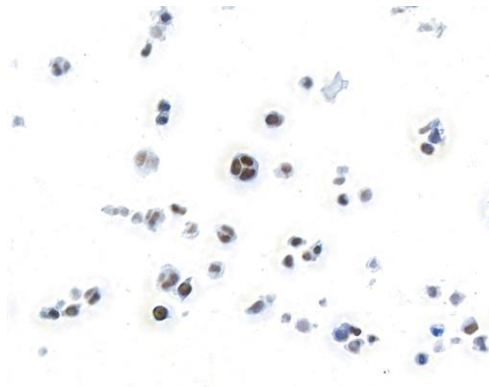
Detection of human RUNX3 by western blot. *Samples:* Whole cell lysate (25 µg) from HDLM-2, SK-MEL-28, A2058, and HH cells prepared using NETN lysis buffer. *Antibody:* Rabbit anti-RUNX3 recombinant monoclonal antibody [BLR122H] (A700-122 lot 1) used at 1:1000. *Secondary:* HRP-conjugated goat anti-rabbit IgG (A120-101P). Chemiluminescence with an exposure time of 3 minutes.



Detection of human RUNX3 by western blot of immunoprecipitates. *Samples:* Whole cell lysate (1.0 mg per IP reaction; 20% of IP loaded) from SK-MEL-28 cells prepared using NETN lysis buffer. *Antibodies:* Rabbit anti-RUNX3 recombinant monoclonal antibody [BLR122H] (A700-122 lot 1) used for IP at 20 µl/mg lysate. RUNX3 was also immunoprecipitated by rabbit anti-RUNX3 antibody BL1653B-1C3. For blotting immunoprecipitated RUNX3, A700-122 was used at 1:1000. Chemiluminescence with an exposure time of 30 seconds.



Detection of human RUNX3 in FFPE Non-Hodgkin's Lymphoma by immunohistochemistry. *Antibody:* Rabbit anti-RUNX3 recombinant monoclonal antibody [BLR122H] (A700-122 Lot 1). *Secondary:* HRP-conjugated goat anti-rabbit IgG (A120-501P). *Substrate:* DAB.



Detection of human RUNX3 in FFPE HDLM-2 cells by immunocytochemistry. *Antibody:* Rabbit anti-RUNX3 recombinant monoclonal antibody [BLR122H] (A700-122 Lot 1). *Secondary:* HRP-conjugated goat anti-rabbit IgG (A120-501P). *Substrate:* DAB.