

GP130/CD130 Recombinant Monoclonal Antibody [BLR114H]

Rabbit Recombinant Monoclonal

Purified Protein ID NP_002175.2
Catalog No. A700-114 GeneID 3572
Lot No. A700-114-1



APPLICATIONS WB, ICC
SPECIES REACTIVITY Human
AMOUNT 100 µl (50+ tests)
CONCENTRATION 1000 µg/ml
STORAGE/SHELF LIFE 2 – 8° C / 1 year from date of receipt
PHYSICAL STATE Liquid
BUFFER Borate Buffered Saline (BBS) pH 8.2 with 0.09% Sodium Azide, BSA Free
ISOTYPE IgG
CLONE # BLR114H
ORIGIN USA
PRODUCTION PROCEDURES Recombinant antibody was purified from cell culture supernatant.

Immunogen was a recombinant protein representing the extracellular domain of human GP130/CD130 (interleukin-6 receptor subunit beta, residues 23–323, NP_002175.2).

APPLICATIONS Centrifuge tube to remove product from lid. Optimal working dilutions should be determined experimentally by the investigator. Prepare working dilution immediately before use.

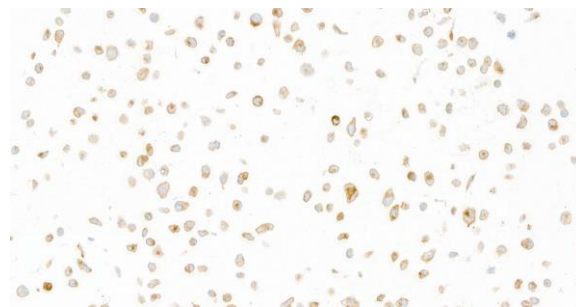
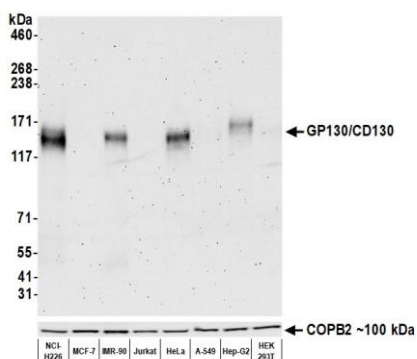
Western Blot 1:1,000

Immunocytochemistry 1:100 to 1:500. Epitope retrieval with citrate buffer pH6.0 is recommended for FFPE cell sections.

IHC HUMAN CONTROLS BeWo Cells, GaMG cells, HeLa Cells, HUVEC-C Cells, MB231 cells

ADDITIONAL INFO <https://www.bethyl.com/product/A700-114>
Use the link above to view SDS, a current list of citations, and other product specific information.

This document certifies that this product has met all of the quality control standards defined by Bethyl Laboratories, Inc.
Eric McIntush, PhD | Chief Scientific Officer Date: July 17, 2020

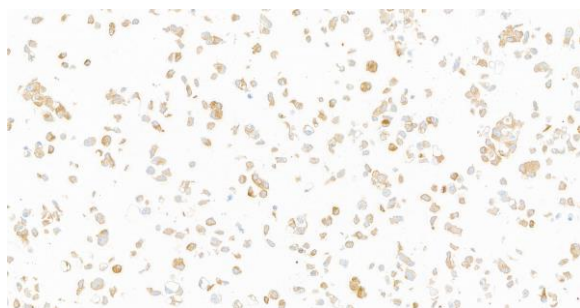


Detection of human GP130/CD130 by western blot.

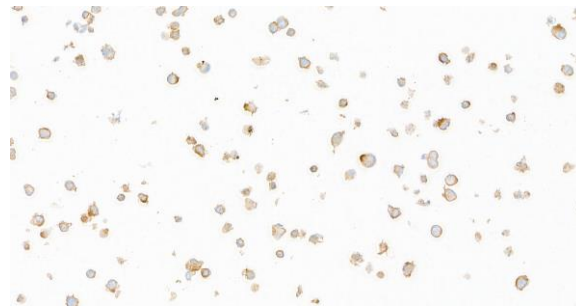
Samples: Whole cell lysate (50 µg) from NCI-H226, MCF-7, IMR-90, Jurkat, HeLa, A-549, Hep-G2, and HEK293T cells prepared using NETN lysis buffer. **Antibody:** Rabbit anti-GP130/CD130 recombinant monoclonal antibody [BLR114H] (A700-114 Lot 1) used at 1:1000. **Secondary:** HRP-conjugated goat anti-rabbit IgG (A120-101P). Chemiluminescence with an exposure time of 30 seconds. Lower Panel: Rabbit anti-COPB2 (A304-523A).

Detection of human GP130/CD130 in FFPE HeLa cells by immunocytochemistry.

Antibody: Rabbit anti-GP130/CD130 recombinant monoclonal antibody [BLR114H] (A700-114 Lot 1). **Secondary:** HRP-conjugated goat anti-rabbit IgG (A120-501P). **Substrate:** DAB.



Detection of human GP130/CD130 in FFPE GaMG cells by immunocytochemistry. **Antibody:** Rabbit anti-GP130/CD130 recombinant monoclonal antibody [BLR114H] (A700-114 Lot 1). **Secondary:** HRP-conjugated goat anti-rabbit IgG (A120-501P). **Substrate:** DAB.



Detection of human GP130/CD130 in FFPE HUVEC-C cells by immunocytochemistry. **Antibody:** Rabbit anti-GP130/CD130 recombinant monoclonal antibody [BLR114H] (A700-114 Lot 1). **Secondary:** HRP-conjugated goat anti-rabbit IgG (A120-501P). **Substrate:** DAB.