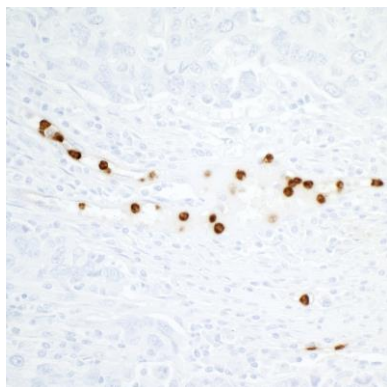


Detection of human CEACAM8/CD66b by western blot.

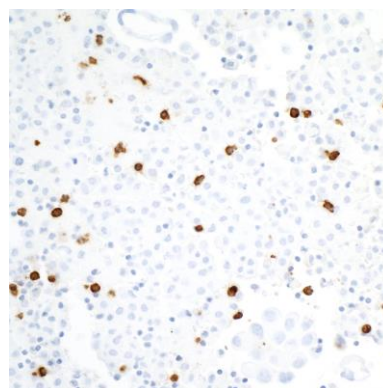
Samples: Whole cell lysate (10 µg) from Raji, K-562, HL-60, THP-1, KG-1, MUTZ-3, SR, and Daudi cells prepared using NETN lysis buffer. *Antibody:* Rabbit anti-CEACAM8/CD66b recombinant monoclonal antibody [BLR117H] (A700-111 lot 1) used at 1:1000. *Secondary:* HRP-conjugated goat anti-rabbit IgG (A120-101P). Chemiluminescence with an exposure time of 30 seconds.

Detection of human CEACAM8/CD66b by western blot of immunoprecipitates.

Samples: Whole cell lysate (1.0 mg per IP reaction; 20% of IP loaded) from HL-60 cells prepared using NETN lysis buffer. *Antibody:* Rabbit anti-CEACAM8/CD66b recombinant monoclonal antibody [BLR117H] (A700-111 lot 1) used at 20 µl/mg lysate. For blotting immunoprecipitated CEACAM8/CD66b, A700-111 was used at 1:1000. Chemiluminescence with an exposure time of 30 seconds.



Detection of human CEACAM8/CD66b in FFPE breast carcinoma by immunohistochemistry. *Antibody:* Rabbit anti-CEACAM8/CD66b recombinant monoclonal antibody [BLR111H] (A700-111 Lot 1). *Secondary:* HRP-conjugated goat anti-rabbit IgG (A120-501P). *Substrate:* DAB.



Detection of human CEACAM8/CD66b in FFPE lung carcinoma pleural effusion by immunohistochemistry. *Antibody:* Rabbit anti-CEACAM8/CD66b recombinant monoclonal antibody [BLR111H] (A700-111 Lot 1). *Secondary:* HRP-conjugated goat anti-rabbit IgG (A120-501P). *Substrate:* DAB.