

Claudin-1 Recombinant Monoclonal Antibody [BLR094G]

Rabbit Recombinant Monoclonal

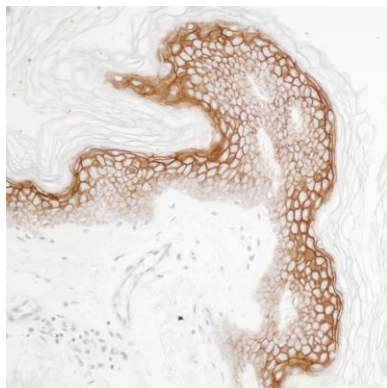
Purified	Protein ID	NP_066924.1
Catalog No. A700-094	GeneID	9076
Lot No. A700-094-1		



APPLICATIONS	WB, IP, IHC, ICC
SPECIES REACTIVITY	Human
AMOUNT	100 µl (50+ tests)
CONCENTRATION	500 µg/ml
STORAGE/SHELF LIFE	2 – 8° C / 1 year from date of receipt
PHYSICAL STATE	Liquid
BUFFER	Borate Buffered Saline (BBS) pH 8.2 with 0.1% BSA and 0.09% Sodium Azide
ISOTYPE	IgG
CLONE #	BLR094G
ORIGIN	USA
PRODUCTION PROCEDURES	Recombinant antibody was purified from cell culture supernatant. Immunogen was a peptide representing a region between residue 161 and the C-terminus (residue 211) of human claudin-1 using the numbering given in entry NP_066924.1 (Gene ID 9076).
APPLICATIONS	Centrifuge tube to remove product from lid. Optimal working dilutions should be determined experimentally by the investigator. Prepare working dilution immediately before use. Western Blot 1:1000 Immunoprecipitation 20 µl/1 mg lysate Immunohistochemistry 1:100 to 1:500. Epitope retrieval with citrate buffer pH6.0 is recommended for FFPE tissue sections. Immunocytochemistry 1:100 to 1:500. Epitope retrieval with citrate buffer pH6.0 is recommended for FFPE cell sections.
IHC HUMAN CONTROLS	Bladder Cell Carcinoma, Colon Carcinoma, Liver Carcinoma, Lung Carcinoma, Ovarian Carcinoma, Skin, SK-N-MC Cells, SW620 Cells, SW954 Cells
ADDITIONAL INFO	https://www.bethyl.com/product/A700-094 Use the link above to view SDS, a current list of citations, and other product specific information.

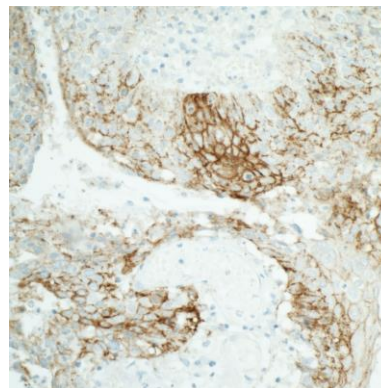
This document certifies that this product has met all of the quality control standards defined by Bethyl Laboratories, Inc.
Eric McIntush, PhD | Chief Scientific Officer

Date: October 21, 2019



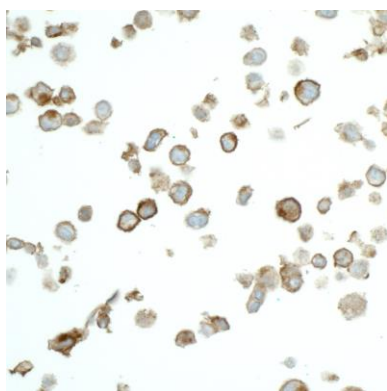
Detection of human Claudin-1 in FFPE skin by IHC.

Antibody: Rabbit anti-Claudin-1 recombinant monoclonal antibody [BLR094G] (A700-094 lot 1). *Secondary:* HRP-conjugated goat anti-rabbit IgG (A120-501P). *Substrate:* DAB.



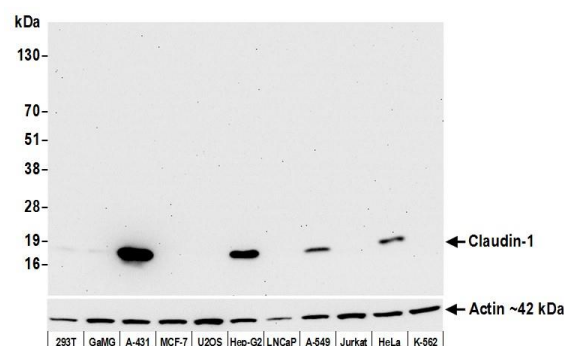
Detection of human Claudin-1 in FFPE lung carcinoma by IHC.

Antibody: Rabbit anti-Claudin-1 recombinant monoclonal antibody [BLR094G] (A700-094 lot 1). *Secondary:* HRP-conjugated goat anti-rabbit IgG (A120-501P). *Substrate:* DAB.



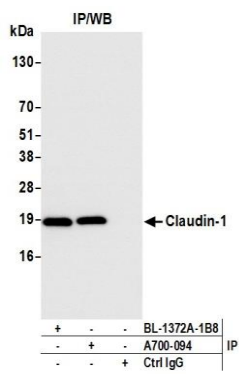
Detection of human Claudin-1 in FFPE SW954 by ICC.

Antibody: Rabbit anti-Claudin-1 recombinant monoclonal antibody [BLR094G] (A700-094 lot 1). *Secondary:* HRP-conjugated goat anti-rabbit IgG (A120-501P). *Substrate:* DAB.



Detection of human Claudin-1 by western blot. Samples:

Whole cell lysate (10 µg) from HEK293T, GaMG, A-431, MCF-7, U2OS, Hep-G2, LNCaP, A-549, Jurkat, HeLa, and K-562 cells prepared using NETN lysis buffer. *Antibody:* Rabbit anti-Claudin-1 recombinant monoclonal antibody [BLR094G] (A700-094 lot 1) used at 1:1000. *Secondary:* HRP-conjugated goat anti-rabbit IgG (A120-101P). Chemiluminescence with an exposure time of 30 seconds. Lower Panel: Rabbit anti-Actin recombinant monoclonal antibody [BLR057F] A700-057.



Detection of human Claudin-1 by western blot of immunoprecipitates. *Samples:* Whole cell lysate (1.0 mg per IP reaction; 20% of IP loaded) from A-431 cells prepared using NETN lysis buffer. *Antibodies:* Rabbit anti-Claudin-1 recombinant monoclonal antibody [BLR094G] (A700-094 lot 1) used for IP at 20 µl/mg lysate. Claudin-1 was also immunoprecipitated by rabbit anti-Claudin-1 recombinant monoclonal antibody [BL-1372A-1B8]. For blotting immunoprecipitated Claudin-1, A700-094 was used at 1:1000. Chemiluminescence with an exposure time of 1 second.