

# MED12 Recombinant Monoclonal Antibody [BLR084G]

Rabbit Recombinant Monoclonal

Purified Protein ID NP\_005111.2  
Catalog No. A700-084 GeneID 9968  
Lot No. A700-084-1



**APPLICATIONS** WB, IP, IHC, ICC  
**SPECIES REACTIVITY** Human, Mouse  
**AMOUNT** 100 µl (50+ tests)  
**CONCENTRATION** 250 µg/ml  
**STORAGE/SHELF LIFE** 2 – 8° C / 1 year from date of receipt  
**PHYSICAL STATE** Liquid  
**BUFFER** Borate Buffered Saline (BBS) pH 8.2 with 0.1% BSA and 0.09% Sodium Azide  
**ISOTYPE** IgG  
**CLONE #** BLR084G  
**ORIGIN** USA  
**PRODUCTION PROCEDURES** Recombinant antibody was purified from cell culture supernatant.

Immunogen was a peptide representing a region between residue 2127 and the C-terminus (residue 2177) of human mediator complex subunit 12 using the numbering given in entry NP\_005111.2 (Gene ID 9968).

**APPLICATIONS** Centrifuge tube to remove product from lid. Optimal working dilutions should be determined experimentally by the investigator. Prepare working dilution immediately before use.

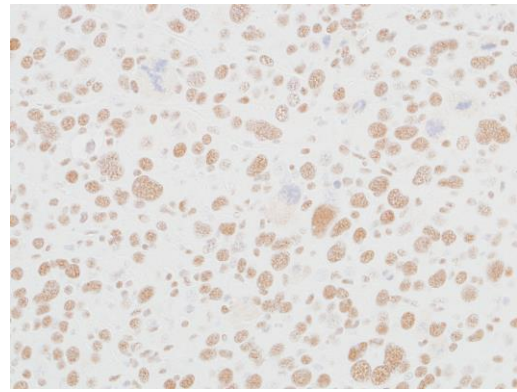
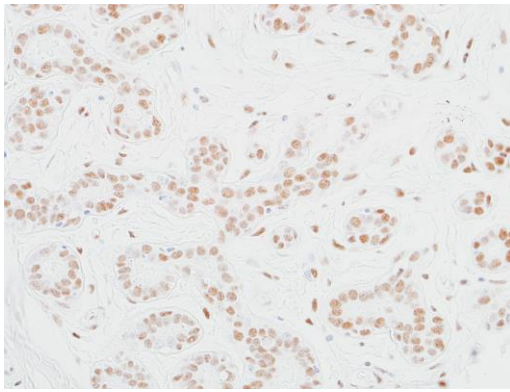
Western Blot 1:1000  
Immunoprecipitation 20 µl/1 mg lysate  
Immunohistochemistry 1:100 to 1:500. Epitope retrieval with citrate buffer pH6.0 is recommended for FFPE tissue sections.  
Immunocytochemistry 1:100 to 1:500. Epitope retrieval with citrate buffer pH6.0 is recommended for FFPE cell sections.

**IHC HUMAN CONTROLS** Breast Carcinoma, Lung Carcinoma, Melanoma, HCT 116 Cells, HeLa Cells, U-251MG Cells

**IHC MOUSE CONTROLS** Renal Cell Carcinoma

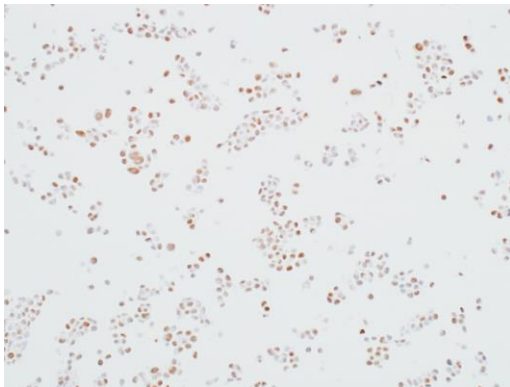
**ADDITIONAL INFO** <https://www.bethyl.com/product/A700-084>  
Use the link above to view SDS, a current list of citations, and other product specific information.

This document certifies that this product has met all of the quality control standards defined by Bethyl Laboratories, Inc.  
Eric McIntush, PhD | Chief Scientific Officer Date: September 19, 2019

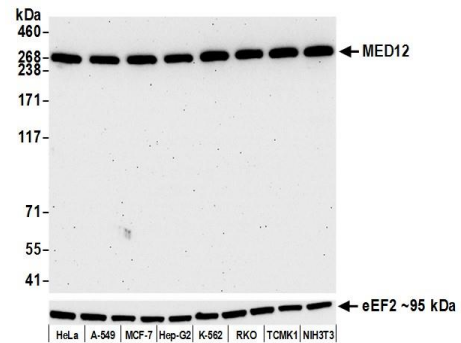


**Detection of human MED12 in FFPE breast carcinoma by IHC.** *Antibody:* Rabbit anti-MED12 recombinant monoclonal antibody [BLR084G] (A700-084 lot 1). *Secondary:* HRP-conjugated goat anti-rabbit IgG (A120-501P). *Substrate:* DAB.

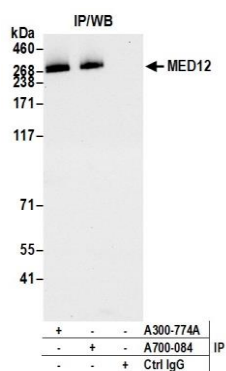
**Detection of mouse MED12 in FFPE renal carcinoma by IHC.** *Antibody:* Rabbit anti-MED12 recombinant monoclonal antibody [BLR084G] (A700-084 lot 1). *Secondary:* HRP-conjugated goat anti-rabbit IgG (A120-501P). *Substrate:* DAB.



**Detection of human MED12 in FFPE HCT-116 cells by ICC.** *Antibody:* Rabbit anti-MED12 recombinant monoclonal antibody [BLR084G] (A700-084 lot 1). *Secondary:* HRP-conjugated goat anti-rabbit IgG (A120-501P). *Substrate:* DAB.



**Detection of human and mouse MED12 by western blot.** *Samples:* Whole cell lysate (50 µg) from HeLa, A-549, MCF-7, Hep-G2, K-562, RKO, TCMK-1, and NIH 3T3 cells prepared using NETN lysis buffer. *Antibody:* Rabbit anti-MED12 recombinant monoclonal antibody [BLR084G] (A700-084 lot 1) used at 1:1000. *Secondary:* HRP-conjugated goat anti-rabbit IgG (A120-101P). Chemiluminescence with an exposure time of 75 seconds. Lower Panel: Rabbit anti-eEF2 (A301-688A).



**Detection of human MED12 by western blot of immunoprecipitates.** *Samples:* Whole cell lysate (1.0 mg per IP reaction; 20% of IP loaded) from HeLa cells prepared using NETN lysis buffer. *Antibodies:* Rabbit anti-MED12 recombinant monoclonal antibody [BLR084G] (A700-084 lot 1) used for IP at 20  $\mu$ l/mg lysate. MED12 was also immunoprecipitated by rabbit anti-MED12 antibody A300-774A. For blotting immunoprecipitated MED12, A700-084 was used at 1:1000. Chemiluminescence with an exposure time of 10 seconds.