

PVR/CD155 Recombinant Monoclonal Antibody [BLR074G]

Rabbit Recombinant Monoclonal

Purified Protein ID NP_006496.4
Catalog No. A700-074 GeneID 5817
Lot No. A700-074-1



APPLICATIONS WB, IHC, ICC, IHC-IF
SPECIES REACTIVITY Human
AMOUNT 100 µl (50+ tests)
CONCENTRATION 100 µg/ml
STORAGE/SHELF LIFE 2 – 8° C / 1 year from date of receipt
PHYSICAL STATE Liquid
BUFFER Borate Buffered Saline (BBS) pH 8.2 with 0.1% BSA and 0.09% Sodium Azide
ISOTYPE IgG
CLONE # BLR074G
ORIGIN USA
PRODUCTION PROCEDURES Recombinant antibody was purified from cell culture supernatant.

Immunogen was a recombinant protein representing the extracellular domain of human PVR/CD155 (residues 28–329, NP_006496.4).

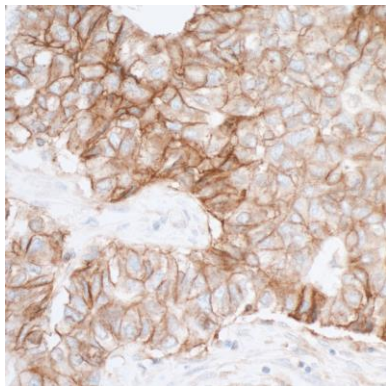
APPLICATIONS Centrifuge tube to remove product from lid. Optimal working dilutions should be determined experimentally by the investigator. Prepare working dilution immediately before use.

Western Blot 1:1,000
Immunohistochemistry 1:100 to 1:500. Epitope retrieval with citrate buffer pH6.0 is recommended for FFPE tissue sections.
Immunocytochemistry 1:100 to 1:500. Epitope retrieval with citrate buffer pH6.0 is recommended for FFPE cell sections.
Immunofluorescence (IHC) 1:100 to 1:500. Epitope retrieval with citrate buffer pH6.0 is recommended for FFPE tissue sections.

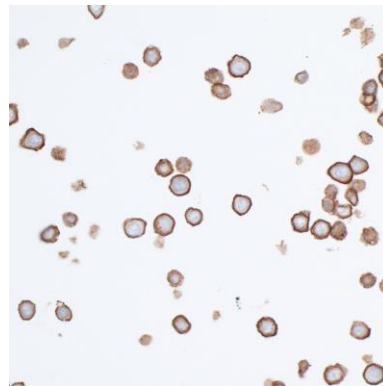
IHC HUMAN CONTROLS Breast Carcinoma, Liver Carcinoma, Lung Carcinoma, HeLa Cells, HT-29 Cells

ADDITIONAL INFO <https://www.bethyl.com/product/A700-074>
Use the link above to view SDS, a current list of citations, and other product specific information.

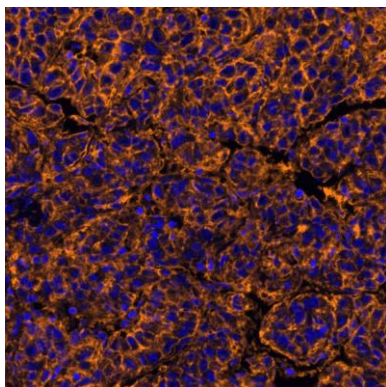
This document certifies that this product has met all of the quality control standards defined by Bethyl Laboratories, Inc.
Brian McWilliams, PhD Date: October 23, 2020



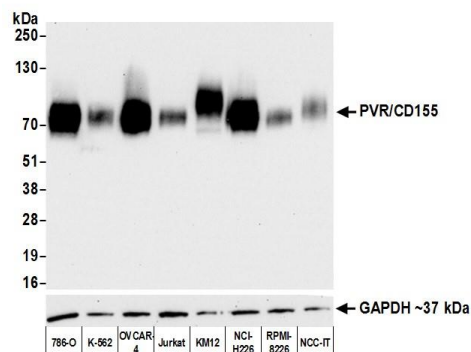
Detection of human PVR/CD155 by immunohistochemistry. *Sample:* FFPE section of lung carcinoma. *Antibody:* Rabbit anti-PVR/CD155 recombinant monoclonal antibody [BLR074G] (A700-074 lot 1) used at 1:100. *Secondary:* HRP-conjugated goat anti-rabbit IgG (A120-501P). *Substrate:* DAB.



Detection of human PVR/CD155 by immunocytochemistry. *Sample:* FFPE section of HT29 cells. *Antibody:* Rabbit anti-PVR/CD155 recombinant monoclonal antibody [BLR074G] (A700-074 lot 1) used at 1:100. *Secondary:* HRP-conjugated goat anti-rabbit IgG (A120-501P). *Substrate:* DAB.



Detection of human PVR/CD155 in FFPE hepatic carcinoma by IHC-IF. *Antibody:* Rabbit anti-PVR/CD155 recombinant monoclonal antibody [BLR074G] (A700-074 Lot 1). *Secondary:* HRP-conjugated goat anti-rabbit IgG (A120-501P). *Substrate:* Opal™. Counterstain: DAPI.



Detection of human PVR/CD155 by western blot. *Samples:* Whole cell lysate (10 µg) from 786-O, K-562, OVCAR-4, Jurkat, KM12, NCI-H226, RPMI-8226, and NCC-IT cells prepared using NETN lysis buffer. *Antibody:* Rabbit anti-PVR/CD155 recombinant monoclonal antibody [BLR074G] (A700-074 lot 1) used at 1:1000. *Secondary:* HRP-conjugated goat anti-rabbit IgG (A120-101P). Chemiluminescence with an exposure time of 10 seconds. Lower Panel: Rabbit anti-GAPDH (A300-639A).