

BRD3 Recombinant Monoclonal Antibody [BLR069G]

Rabbit Recombinant Monoclonal

Purified Protein ID NP_031397.1
Catalog No. A700-069 GeneID 8019
Lot No. A700-069-1



APPLICATIONS	WB, IP, IHC, ICC, IHC-IF
SPECIES REACTIVITY	Human
AMOUNT	100 µl (50+ tests)
CONCENTRATION	100 µg/ml
STORAGE/SHELF LIFE	2 - 8° C / 1 year from date of receipt
PHYSICAL STATE	Liquid
BUFFER	Borate Buffered Saline (BBS) pH 8.2 with 0.1% BSA and 0.09% Sodium Azide
ISOTYPE	IgG
CLONE #	BLR069G
ORIGIN	USA
PRODUCTION PROCEDURES	Recombinant antibody was purified from cell culture supernatant.

Immunogen was a peptide representing a region between residue 676 and 726 of human Bromodomain-containing protein 3 using the numbering given in entry NP_031397.1 (Gene ID 8019).

APPLICATIONS Centrifuge tube to remove product from lid. Optimal working dilutions should be determined experimentally by the investigator. Prepare working dilution immediately before use.

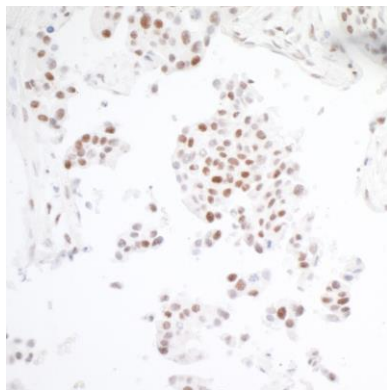
Western Blot	1:1000
Immunoprecipitation	20 µl/1 mg lysate
Immunohistochemistry	1:100 to 1:500. Epitope retrieval with citrate buffer pH6.0 is recommended for FFPE tissue sections.
Immunocytochemistry	1:100 to 1:500. Epitope retrieval with citrate buffer pH6.0 is recommended for FFPE cell sections.
Immunofluorescence (IHC)	1:100 to 1:500. Epitope retrieval with citrate buffer pH6.0 is recommended for FFPE tissue sections.

IHC HUMAN CONTROLS Breast Carcinoma, Colon Carcinoma, Lung Carcinoma, Ovarian Carcinoma, A-172 Cells, A-2058 Cells, A-549 Cells, HEK293T Cells, HeLa Cells, HH Cells, OVCAR-3 Cells

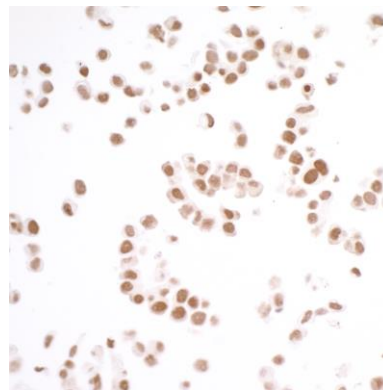
ADDITIONAL INFO <https://www.bethyl.com/product/A700-069>

Use the link above to view SDS, a current list of citations, and other product specific information.

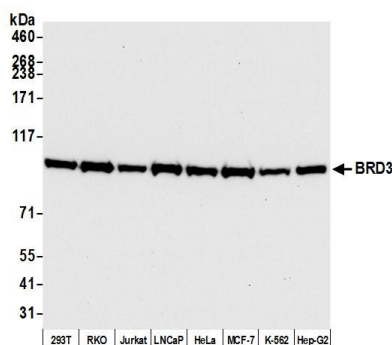
This document certifies that this product has met all of the quality control standards defined by Bethyl Laboratories, Inc.
Eric McIntush, PhD | Chief Scientific Officer Date: September 9, 2019



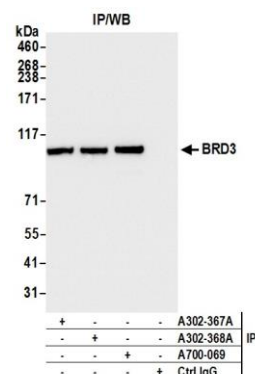
Detection of human BRD3 by immunohistochemistry.
Sample: FFPE section of lung carcinoma. *Antibody:* Rabbit anti-BRD3 recombinant monoclonal antibody [BLR069G] (A700-069 lot 1) used at 1:250. *Secondary:* HRP-conjugated goat anti-rabbit IgG (A120-501P). *Substrate:* DAB.



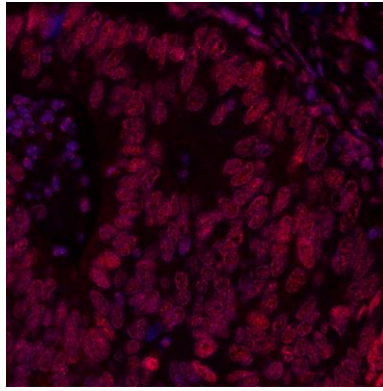
Detection of human BRD3 by immunocytochemistry.
Sample: FFPE section of OVCAR-3 cells. *Antibody:* Rabbit anti-BRD3 recombinant monoclonal antibody [BLR069G] (A700-069 lot 1) used at 1:250. *Secondary:* HRP-conjugated goat anti-rabbit IgG (A120-501P). *Substrate:* DAB.



Detection of human BRD3 by western blot. *Samples:* Whole cell lysate (50 µg) from HEK293T, RKO, Jurkat, LNCaP, HeLa, MCF-7, K-562, and Hep-G2 cells prepared using NETN lysis buffer. *Antibody:* Rabbit anti-BRD3 recombinant monoclonal antibody [BLR069G] (A700-069 lot 1) used at 1:1000. *Secondary:* HRP-conjugated goat anti-rabbit IgG (A120-101P). Chemiluminescence with an exposure time of 10 seconds.



Detection of human BRD3 by western blot of immunoprecipitates. *Samples:* Whole cell lysate (1.0 mg per IP reaction; 20% of IP loaded) from HEK293T cells prepared using NETN lysis buffer. *Antibodies:* Rabbit anti-BRD3 recombinant monoclonal antibody [BLR069G] (A700-069 lot 1) used for IP at 20 µl/mg lysate. BRD3 was also immunoprecipitated by rabbit anti-BRD3 antibodies (A302-367A, A302-368A). For blotting immunoprecipitated BRD3, A700-069 was used at 1:1000. Chemiluminescence with an exposure time of 1 second.

**Detection of human BRD3 by immunohistochemistry.**

Sample: FFPE section of human colon carcinoma. *Antibody:* Rabbit anti-BRD3 recombinant monoclonal antibody [BLR069G] (A700-069 lot 1) used at 1:200. *Secondary:* DyLight® 594-conjugated goat anti-rabbit IgG (A120-101D4). *Counterstain:* DAPI (blue).