

MafA Recombinant Monoclonal Antibody [BLR067G]

Rabbit Recombinant Monoclonal

Purified Protein ID NP_963883.2
Catalog No. A700-067 GeneID 389692
Lot No. A700-067-3



APPLICATIONS WB, IHC, ICC, IHC-IF
SPECIES REACTIVITY Human, Mouse
AMOUNT 100 µl (50+ tests)
CONCENTRATION 1000 µg/ml
STORAGE/SHELF LIFE 2 - 8° C / 1 year from date of receipt
PHYSICAL STATE Liquid
BUFFER Borate Buffered Saline (BBS) pH 8.2 with 0.09% Sodium Azide, BSA Free
ISOTYPE IgG
CLONE # BLR067G
ORIGIN USA
PRODUCTION PROCEDURES Recombinant antibody was purified from cell culture supernatant.

Immunogen was a peptide representing a region between residue 125 and 175 of human MAF bZIP transcription factor A using the numbering given in entry NP_963883.2 (Gene ID 389692).

APPLICATIONS Centrifuge tube to remove product from lid. Optimal working dilutions should be determined experimentally by the investigator. Prepare working dilution immediately before use.

Western Blot 1:1000
Immunohistochemistry 1:100 to 1:500. Epitope retrieval with citrate buffer pH6.0 is recommended for FFPE tissue sections. Zinc-fixative (JB fix) is recommended to enhance staining.
Immunocytochemistry 1:100 to 1:500. Epitope retrieval with citrate buffer pH6.0 is recommended for FFPE cell sections.
Immunofluorescence (IHC) 1:100 to 1:500. Epitope retrieval with citrate buffer pH6.0 is recommended for FFPE tissue sections. Zinc-fixative (JB fix) is recommended to enhance staining.

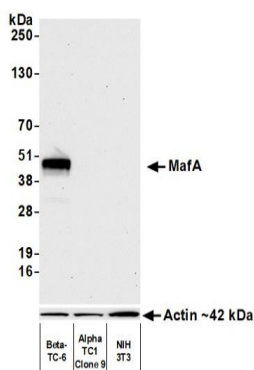
IHC HUMAN CONTROLS Pancreas, Pancreatic Tumor

IHC MOUSE CONTROLS Pancreas, Beta-TC-6 Cells

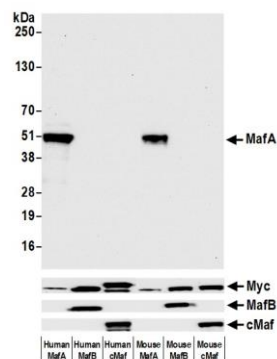
ADDITIONAL INFO <https://www.bethyl.com/product/A700-067>

Use the link above to view SDS, a current list of citations, and other product specific information.

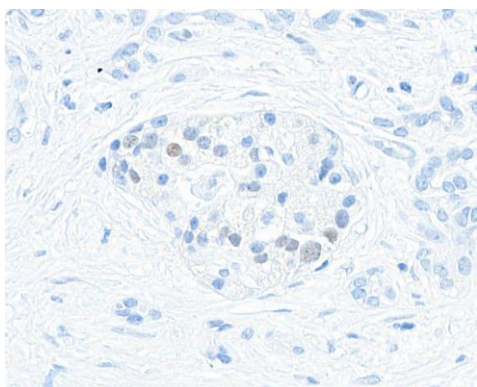
This document certifies that this product has met all of the quality control standards defined by Bethyl Laboratories, Inc.
Brian McWilliams, PhD Date: March 2, 2021



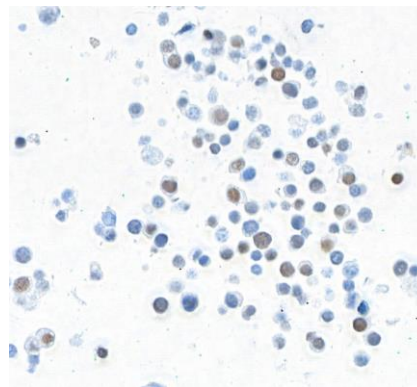
Detection of human MafA by western blot. *Samples:* Whole cell lysate (10 µg) from Beta-TC-6, AlphaTC1 Clone 9, and NIH 3T3 cells prepared using NETN lysis buffer. *Antibody:* Rabbit anti-MafA recombinant monoclonal antibody [BLR067G] (A700-067 lot 3) used at 1:1000. *Secondary:* HRP-conjugated goat anti-rabbit IgG (A120-101P). Chemiluminescence with an exposure time of 30 seconds. Lower Panel: Rabbit anti-Actin recombinant monoclonal antibody [BLR057F] (A700-057).



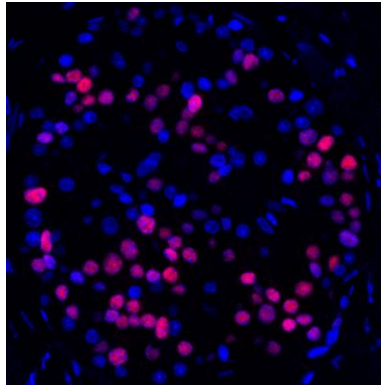
Detection of human MafA by western blot. *Samples:* Whole cell lysate from HEK293T transfected with myc tagged human or mouse MafA, MafB or c-Maf prepared using NETN lysis buffer. *Antibody:* Rabbit anti-MafA recombinant monoclonal antibody [BLR067G] (A700-067 lot 3) used at 1:1000. *Secondary:* HRP-conjugated goat anti-rabbit IgG (A120-101P). Chemiluminescence with an exposure time of 10 seconds. Lower Panels: Rabbit recombinant monoclonal antibodies to Myc-tag (A191-101), MafB (A700-046), and cMaf (A700-045).



Detection of human MafA in FFPE pancreatic tumor by immunohistochemistry. *Antibody:* Rabbit anti-MafA recombinant monoclonal antibody [BLR067G] (A700-067 lot 3). *Secondary:* HRP-conjugated goat anti-rabbit IgG (A120-501P). *Substrate:* DAB.



Detection of mouse MafA in FFPE beta-TC-6 cells by immunocytochemistry. *Antibody:* Rabbit anti-MafA recombinant monoclonal antibody [BLR067G] (A700-067 lot 3). *Secondary:* HRP-conjugated goat anti-rabbit IgG (A120-501P). *Substrate:* DAB.



Detection of human MafA (red) by immunohistochemistry.

Sample: FFPE section of human pancreatic carcinoma.

Antibody: Rabbit anti-MafA recombinant monoclonal antibody [BLR067G] (A700-067 lot 1) used at 1:250.

Secondary: HRP-conjugated goat anti-rabbit IgG (A120-501P). *Substrate:* Opal™. *Counterstain:* DAPI (blue).