

Phospho BCKDHA (S292) Recombinant Monoclonal Antibody [BLR060F]

Rabbit Recombinant Monoclonal

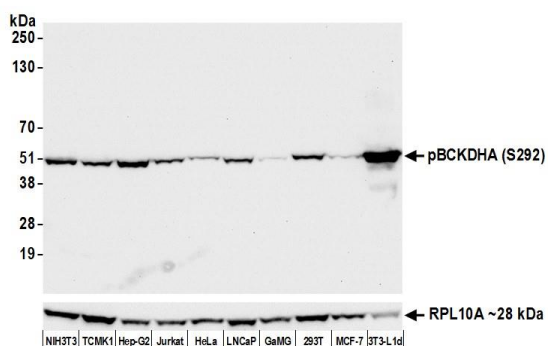
Purified Protein ID NP_000700.1
Catalog No. A700-060 GeneID 593
Lot No. A700-060-2



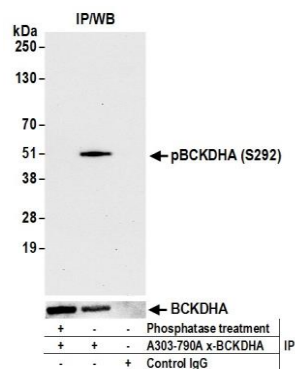
APPLICATIONS	WB
SPECIES REACTIVITY	Human, Mouse
AMOUNT	100 µl (10 blots)
CONCENTRATION	40 µg/ml
STORAGE/SHELF LIFE	2 – 8° C / 1 year from date of receipt
PHYSICAL STATE	Liquid
BUFFER	Borate Buffered Saline (BBS) pH 8.2 with 0.1% BSA and 0.09% Sodium Azide
ISOTYPE	IgG
CLONE #	BLR060F
ORIGIN	USA
PRODUCTION PROCEDURES	Recombinant antibody was purified from cell culture supernatant. Immunogen was a peptide surrounding phosphorylated serine 292 of mitochondrial human Branched Chain Keto Acid Dehydrogenase E1, Alpha polypeptide. Using the numbering given for the precursor protein of entry NP_000700.1 (GeneID 593), the phosphorylated serine corresponds to residue 337.
APPLICATIONS	Centrifuge tube to remove product from lid. Optimal working dilutions should be determined experimentally by the investigator. Prepare working dilution immediately before use. Western Blot 1:1000
ADDITIONAL INFO	https://www.bethyl.com/product/A700-060 Use the link above to view SDS, a current list of citations, and other product specific information.

This document certifies that this product has met all of the quality control standards defined by Bethyl Laboratories, Inc.
Eric McIntush, PhD | Chief Scientific Officer Date: November 8, 2019

Phospho BCKDHA (S292) Recombinant Monoclonal Antibody [BLRCA700-060]



Detection of human and mouse Phospho BCKDHA (S292) by western blot. *Samples:* Whole cell lysate (50 µg) from NIH 3T3, TCMK-1, Hep-G2, Jurkat, HeLa, LNCaP, GaMG, HEK293T, MCF-7, and differentiated 3T3-L1 cells prepared using NETN lysis buffer. *Antibody:* Rabbit anti-Phospho BCKDHA (S292) recombinant monoclonal antibody [BLR060F] (A700-060 lot 2) used at 1:1000. *Secondary:* HRP-conjugated goat anti-rabbit IgG (A120-101P). Chemiluminescence with an exposure time of 10 seconds. Lower Panel: Rabbit anti-RPL10 (A305-061A).



Detection of Phospho BCKDHA (S292) by western blot of immunoprecipitates. *Samples:* Whole cell lysate (1 mg per IP reaction, 20% of IP loaded) from Hep-G2 cells treated with phosphatase (+) or mock treated (-). *Antibody:* Rabbit anti-BCKDHA antibody A303-790A used for IP at 6 µg per reaction. For blotting immunoprecipitated rabbit anti-Phospho BCKDHA (S292) recombinant monoclonal antibody [BLR060F] (A700-060A lot 2] was used at 1:1000 (upper panel) and A303-790A was used at 1 µg/ml (lower panel). *Secondary:* HRP-conjugated goat anti-rabbit IgG (A120-101P). *Detection:* Chemiluminescence with an exposure time of 30 seconds.