

# MafB Recombinant Monoclonal Antibody [BLR046F]

Rabbit Recombinant Monoclonal

Purified Protein ID NP\_005452.2  
Catalog No. A700-046 GeneID 9935  
Lot No. A700-046-3



**APPLICATIONS** WB, IP, IHC, ICC  
**SPECIES REACTIVITY** Human, Mouse  
**AMOUNT** 100 µl (50+ tests)  
**CONCENTRATION** 1000 µg/ml  
**STORAGE/SHELF LIFE** 2 – 8° C / 1 year from date of receipt  
**PHYSICAL STATE** Liquid  
**BUFFER** Borate Buffered Saline (BBS) pH 8.2 with 0.09% Sodium Azide, BSA Free  
**ISOTYPE** IgG  
**CLONE #** BLR046F  
**ORIGIN** USA  
**PRODUCTION PROCEDURES** Recombinant antibody was purified from cell culture supernatant.

Immunogen was a peptide representing a region between residues 1 and 50 of human MAF bZIP transcription factor B (MafB) using the numbering given in entry NP\_005452.2 (Gene ID 9935).

**APPLICATIONS** Centrifuge tube to remove product from lid. Optimal working dilutions should be determined experimentally by the investigator. Prepare working dilution immediately before use.

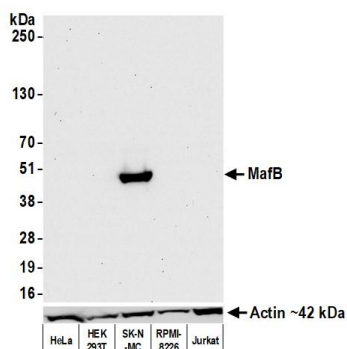
Western Blot 1:1000  
Immunoprecipitation 6 µl/1 mg lysate  
Immunohistochemistry 1:100 to 1:500. Epitope retrieval with citrate buffer pH6.0 is recommended for FFPE tissue sections.  
Immunocytochemistry 1:100 to 1:500. Epitope retrieval with citrate buffer pH6.0 is recommended for FFPE cell sections.

**IHC HUMAN CONTROLS** Pancreas, Pancreatic Tumor, SK-N-MC Cells

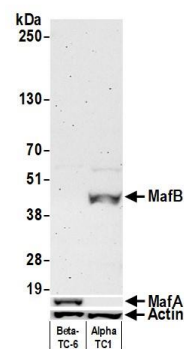
**ADDITIONAL INFO** <https://www.bethyl.com/product/A700-046>

Use the link above to view SDS, a current list of citations, and other product specific information.

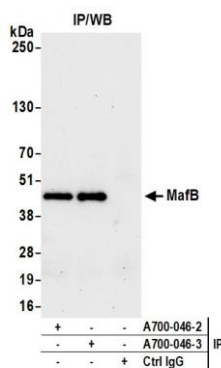
This document certifies that this product has met all of the quality control standards defined by Bethyl Laboratories, Inc.  
Brian McWilliams, PhD Date: January 28, 2021



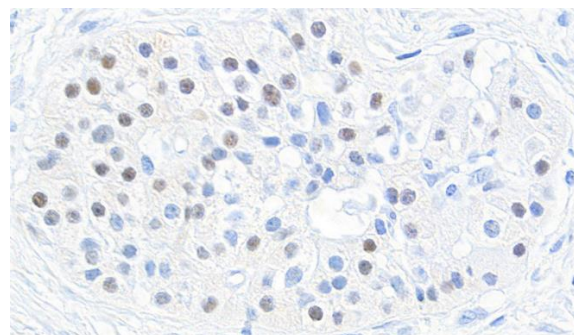
**Detection of human MafB by western blot.** *Samples:* Whole cell lysate (50 µg) from HeLa, HEK293T, SK-N-MC, RPMI-8226, and Jurkat cells prepared using NETN lysis buffer. *Antibody:* Rabbit anti-MafB recombinant monoclonal antibody [BLR046F] (A700-046 lot 3) used at 1:1000. *Secondary:* HRP-conjugated goat anti-rabbit IgG (A120-101P). Chemiluminescence with an exposure time of 30 seconds. Lower Panel: Rabbit anti-Actin antibody (A700-057).



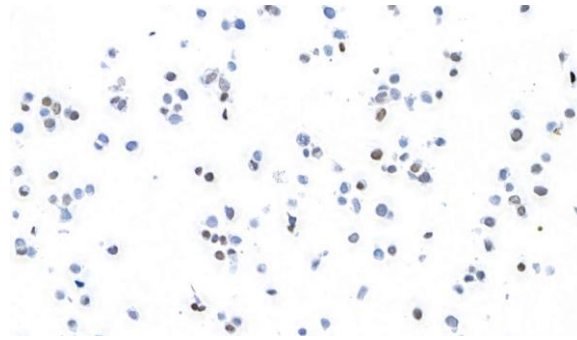
**Detection of mouse MafB by western blot.** *Samples:* Whole cell lysate (50 µg) from Beta-TC-6 and AlphaTC1 Clone 9 cells prepared using NETN lysis buffer. *Antibody:* Rabbit anti-MafB recombinant monoclonal antibody [BLR046F] (A700-046 lot 3) used at 1:1000. *Secondary:* HRP-conjugated goat anti-rabbit IgG (A120-101P). Chemiluminescence with an exposure time of 3 minutes. Lower Panels: Rabbit anti-MafA recombinant monoclonal antibody [BLR067G] (A700-067) and rabbit anti-Actin recombinant monoclonal antibody [BLR046G] (A700-046).



**Detection of human MafB by western blot of immunoprecipitates.** *Samples:* Whole cell lysate (1.0 mg per IP reaction; 20% of IP loaded) from SK-N-MC cells prepared using NETN lysis buffer. *Antibodies:* Rabbit anti-MafB recombinant monoclonal antibody [BLR046F] (A700-046 lot 3) used for IP at 6 µl/mg lysate. MafB was also immunoprecipitated by a previous lot of this antibody (A700-046 lot 2). For blotting immunoprecipitated MafB, A700-046 was used at 1:1000. Chemiluminescence with an exposure time of 30 seconds.



**Detection of human MAFB in FFPE pancreatic tumor by immunohistochemistry.** *Antibody:* Rabbit anti-MafB recombinant monoclonal antibody [BLR046F] (A700-046 lot 3). *Secondary:* HRP-conjugated goat anti-rabbit IgG (A120-501P). *Substrate:* DAB.



**Detection of human MAFB in FFPE SK-N-MC cells by immunocytochemistry.** *Antibody:* Rabbit anti-MafB recombinant monoclonal antibody [BLR046F] (A700-046 lot 3). *Secondary:* HRP-conjugated goat anti-rabbit IgG (A120-501P). *Substrate:* DAB.