

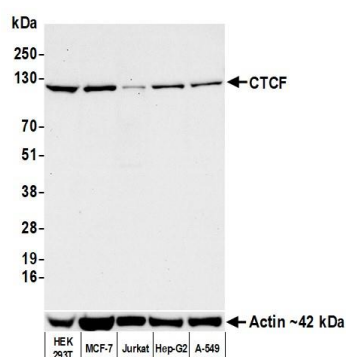
CTCF Recombinant Monoclonal Antibody [BLR041F]

Rabbit Recombinant Monoclonal

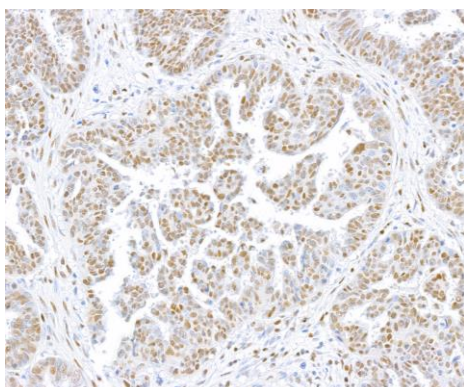
Purified		RefSeq ID	NP_006556.1
Catalog No.	A700-041	Uniprot ID	P49711
Lot No.	4	GeneID	10664

APPLICATIONS	WB, IP, IHC, ICC, Flow Cyt, SW-Size
SPECIES REACTIVITY	Human, Mouse
AMOUNT	100 µl (10 blots)
CONCENTRATION	100 µg/ml
STORAGE/SHELF LIFE	2 – 8°C / 1 year from date of receipt
PHYSICAL STATE	Liquid
BUFFER	Borate Buffered Saline (BBS) pH 8.2 with 0.1% BSA and 0.09% Sodium Azide
ISOTYPE	IgG
CLONE #	BLR041F
ORIGIN	USA
PRODUCTION PROCEDURES	Recombinant antibody was purified from cell culture supernatant. Immunogen was a peptide representing a region between residue 650 to 700 of human CCCTC-binding factor using the numbering given in entry NP_006556.1 (Gene ID 10664).
APPLICATIONS	Centrifuge tube to remove product from lid. Optimal working dilutions should be determined experimentally by the investigator. Prepare working dilution immediately before use. Western Blot 1:1000 Immunoprecipitation 20 µl/mg lysate Immunohistochemistry 1:100 to 1:500. Epitope retrieval with citrate buffer pH6.0 is recommended for FFPE tissue sections. Immunocytochemistry 1:100 to 1:500. Epitope retrieval with citrate buffer pH6.0 is recommended for FFPE cell sections. Flow Cytometry Fixed in 4% formaldehyde and permeabilized with 90% methanol. 1 µl per 1 x 10 ⁶ cells. Simple Western™-Size 1:10 – 1:250
APPLICATION NOTES	All western blot analysis is performed using 5% Milk-TBST for blocking and as antibody diluent. Primary antibody is incubated overnight. Western blots of cell lysates are performed using Goat anti-Rabbit IgG Heavy and Light Chain Antibody (A120-101P). Western blots of immunoprecipitates are performed using Goat anti-Rabbit Light Chain HRP Conjugate (A120-113P) with 5% Normal Pig Serum (S100-020) added to the blocking buffer.
IHC HUMAN CONTROLS	Breast Carcinoma, Colon Carcinoma, Lung Carcinoma, Ovarian Carcinoma, Prostate Carcinoma, Renal Cell Carcinoma, Tonsil, HCT 116 Cells, MCF-7 Cells
IHC MOUSE CONTROLS	CT26 cells, RenCa Cells
ADDITIONAL INFO	https://www.fortislife.com/p/A700-041 Use the link above to view SDS, a current list of citations, and other product specific information.

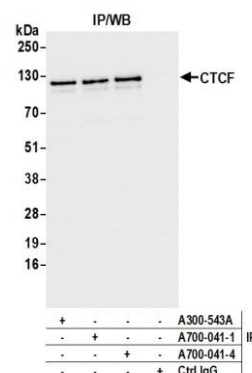
This document certifies that this product has met all of the quality control standards defined by Bethyl Laboratories, Inc.
Michael Spencer, PhD Date: June 25, 2024



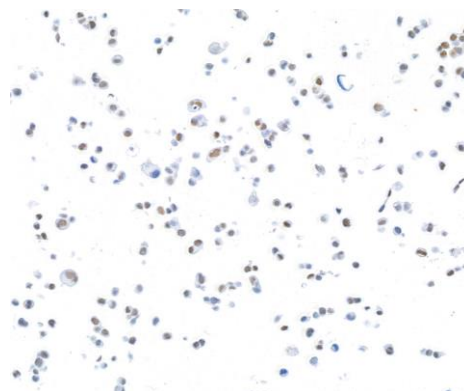
Detection of human CTCF by western blot. *Samples:* Whole cell lysate (50 µg) from HEK293T, MCF-7, Jurkat (10 µg), Hep-G2, and A-549 cells prepared using NETN lysis buffer. *Antibody:* Rabbit anti-CTCF recombinant monoclonal antibody [BL-395-3B3] (A700-041 lot 4) used at 1:1000. *Secondary:* HRP-conjugated goat anti-rabbit IgG (A120-101P). *Detection:* Chemiluminescence with an exposure time of 3 seconds. Lower Panel: Rabbit anti-Actin recombinant monoclonal antibody [BLR057F] (A700-057).



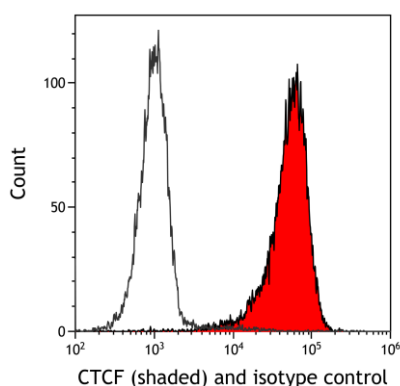
Detection of human CTCF by immunohistochemistry. *Sample:* FFPE section of human ovarian carcinoma. *Antibody:* Rabbit anti-CTCF recombinant monoclonal antibody [BLR041F] (A700-041-4). *Secondary:* HRP-conjugated goat anti-rabbit IgG (A120-501P).



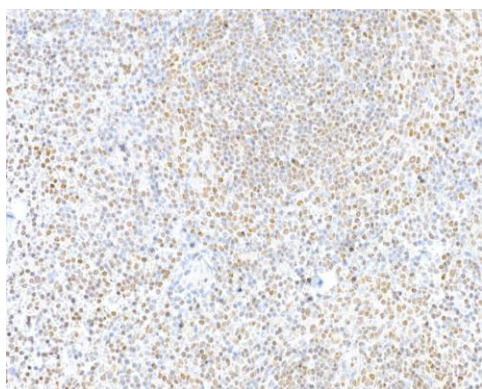
Detection of human CTCF by western blot of immunoprecipitates. *Samples:* Whole cell lysate (1.0 mg per IP reaction; 20% of IP loaded) from HEK293T cells prepared using NETN lysis buffer. *Antibodies:* Rabbit anti-CTCF recombinant monoclonal antibody [BL-395-3B3] (A700-041 lot 4) used for IP at 20 µl/mg lysate. CTCF was also immunoprecipitated by a previous lot of this antibody (A700-041 lot 1) and a second antibody against CTCF (A300-543A). For blotting immunoprecipitated CTCF, A700-041 was used at 1:1000. *Detection:* Chemiluminescence with an exposure time of 1 second.



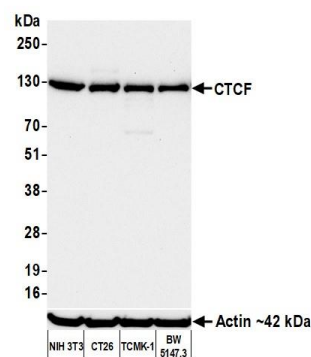
Detection of human CTCF by immunocytochemistry. *Sample:* FFPE section of MCF-7 cells. *Antibody:* Rabbit anti-CTCF recombinant monoclonal antibody [BLR041F] (A700-041-4). *Secondary:* HRP-conjugated goat anti-rabbit IgG (A120-501P).



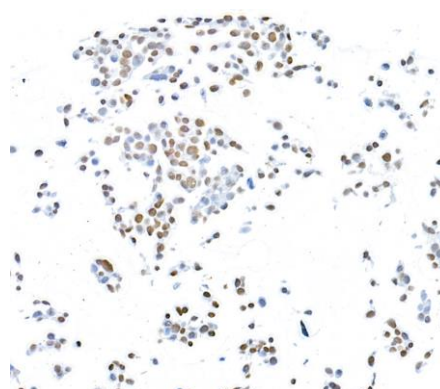
Detection of human CTCF (shaded) in K562 cells by flow cytometry. *Antibody:* Rabbit anti-CTCF recombinant monoclonal antibody [BLR041F] (A700-041) or isotype control (unshaded). *Secondary:* DyLight® 650-conjugated goat anti-rabbit IgG (A120-101D5).



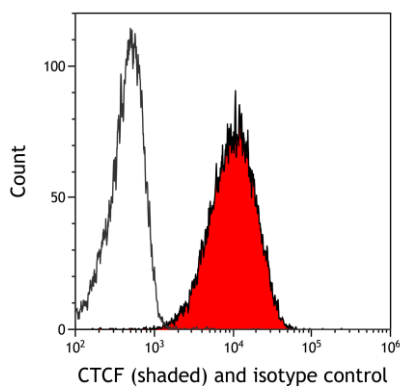
Detection of mouse CTCF by immunohistochemistry. *Sample:* FFPE section of mouse spleen. *Antibody:* Rabbit anti-CTCF recombinant monoclonal antibody [BLR041F] (A700-041-4). *Secondary:* HRP-conjugated goat anti-rabbit IgG (A120-501P).



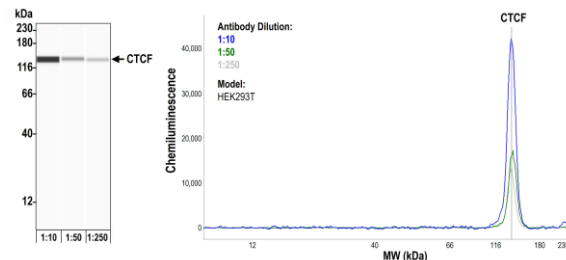
Detection of mouse CTCF by western blot. *Samples:* Whole cell lysate (50 µg) from NIH 3T3, CT26, TCMK-1, and BW5147.3 cells prepared using NETN lysis buffer. *Antibody:* Rabbit anti-CTCF recombinant monoclonal antibody [BL-395-3B3] (A700-041 lot 4) used at 1:1000. *Secondary:* HRP-conjugated goat anti-rabbit IgG (A120-101P). *Detection:* Chemiluminescence with an exposure time of 30 seconds. Lower Panel: Rabbit anti-Actin recombinant monoclonal antibody [BLR057F] (A700-057).



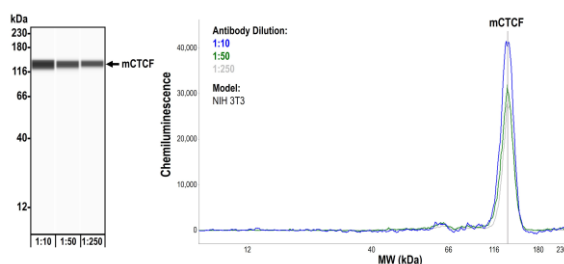
Detection of mouse CTCF by immunocytochemistry. *Sample:* FFPE section of CT26 cells. *Antibody:* Rabbit anti-CTCF recombinant monoclonal antibody [BLR041F] (A700-041-4). *Secondary:* HRP-conjugated goat anti-rabbit IgG (A120-501P).



Detection of mouse CTCF (shaded) in A20 cells by flow cytometry. *Antibody:* Rabbit anti-CTCF recombinant monoclonal antibody [BLR041F] (A700-041) or isotype control (unshaded). *Secondary:* DyLight® 650-conjugated goat anti-rabbit IgG (A120-101D5).



Detection of human CTCF by Simple Western™. *Samples:* Whole cell lysate (0.08 mg/mL) from HEK293T cells prepared using NETN lysis buffer. *Antibody:* Rabbit anti-CTCF recombinant monoclonal antibody [BLR041F] (A700-041) used at 1:10, 1:50, and 1:250. *Separation and Detection:* SallySue ProteinSimple instrument with the 12-230 kDa separation module and anti-Rabbit detection module. Left Panel: Virtual Lane View. Right Panel: Electropherogram.



Detection of mouse CTCF by Simple Western™. *Samples:* Whole cell lysate (2.0 mg/mL) from NIH 3T3 cells prepared using NETN lysis buffer. *Antibody:* Rabbit anti-CTCF recombinant monoclonal antibody [BLR041F] (A700-041) used at 1:10, 1:50, and 1:250. *Separation and Detection:* SallySue ProteinSimple instrument with the 12-230 kDa separation module and anti-Rabbit detection module. Left Panel: Virtual Lane View. Right Panel: Electropherogram.