

FOXP3 Recombinant Monoclonal Antibody [BLR034F]

Rabbit Recombinant Monoclonal

Purified Protein ID NP_054728.2
Catalog No. A700-034 GeneID 50943
Lot No. A700-034-2



APPLICATIONS WB, IP, IHC, ICC, IHC-IF, mIF
SPECIES REACTIVITY Human
AMOUNT 100 µl (50+ tests)
CONCENTRATION 1000 µg/ml
STORAGE/SHELF LIFE 2 – 8° C / 1 year from date of receipt
PHYSICAL STATE Liquid
BUFFER Borate Buffered Saline (BBS) pH 8.2 with 0.09% Sodium Azide, BSA Free
ISOTYPE IgG
CLONE # BLR034F
ORIGIN USA
PRODUCTION PROCEDURES Recombinant antibody was purified from cell culture supernatant.

Immunogen was a peptide representing a region between residue 275 and 325 of human Forkhead box P3 using the numbering given in entry NP_054728.2 (Gene ID 50943).

APPLICATIONS Centrifuge tube to remove product from lid. Optimal working dilutions should be determined experimentally by the investigator. Prepare working dilution immediately before use.

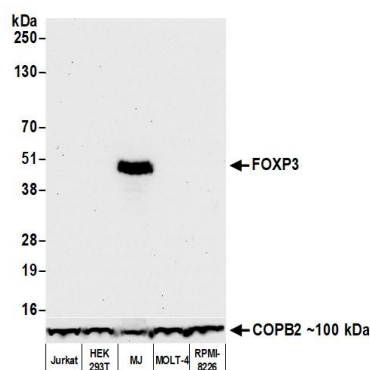
| | |
|------------------------------|--|
| Western Blot | 1:1000 |
| Immunoprecipitation | 20 ul/1mg lysate |
| Immunohistochemistry | 1:100 to 1:500. Epitope retrieval with citrate buffer pH6.0 is recommended for FFPE tissue sections. |
| Immunocytochemistry | 1:100 to 1:500. Epitope retrieval with citrate buffer pH6.0 is recommended for FFPE cell sections. |
| Immunofluorescence (IHC) | 1:100 to 1:500. Epitope retrieval with citrate buffer pH6.0 is recommended for FFPE tissue sections. |
| Multiplex Immunofluorescence | 1:250 |

IHC HUMAN CONTROLS Breast Carcinoma, Lung Carcinoma, Prostate Carcinoma, Renal Cell Carcinoma, Tonsil, MJ Cells

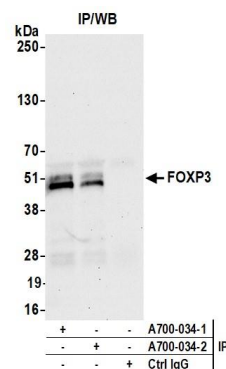
ADDITIONAL INFO <https://www.bethyl.com/product/A700-034>

Use the link above to view SDS, a current list of citations, and other product specific information.

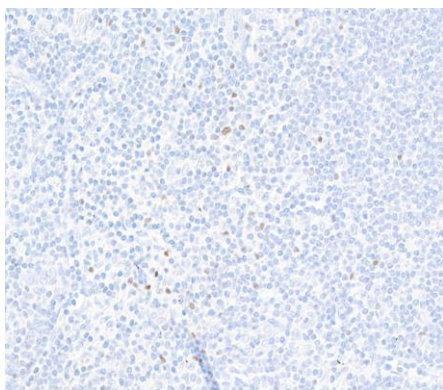
This document certifies that this product has met all of the quality control standards defined by Bethyl Laboratories, Inc.
Brian McWilliams, PhD Date: December 29, 2020



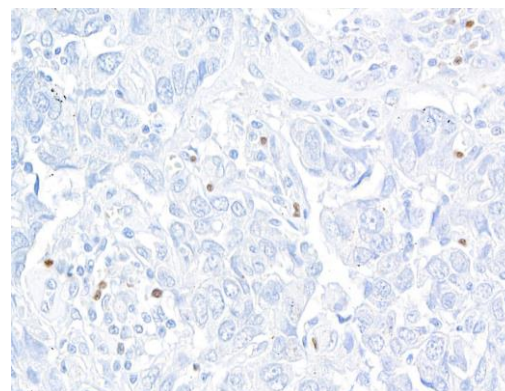
Detection of human FOXP3 by western blot. *Samples:* Whole cell lysate (50 μ g) from Jurkat, HEK293T, MJ, MOLT-4, and RPMI-8226 cells prepared using NETN lysis buffer. *Antibody:* Rabbit anti-FOXP3 recombinant monoclonal antibody [BLR034F] (A700-034 lot 2) used at 1:1000. *Secondary:* HRP-conjugated goat anti-rabbit IgG (A120-101P). Chemiluminescence with an exposure time of 30 seconds. Lower Panel: Rabbit anti-COPB2 antibody (A304-523A).



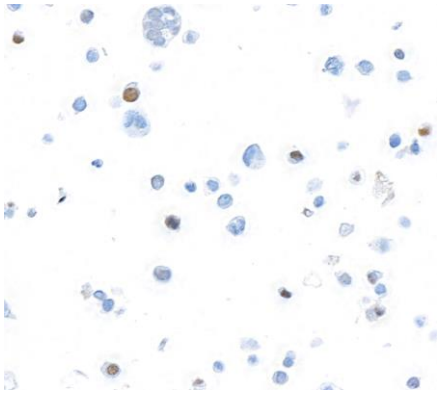
Detection of human FOXP3 by western blot of immunoprecipitates. *Samples:* Whole cell lysate (1.0 mg per IP reaction; 20% of IP loaded) from MJ cells prepared using NETN lysis buffer. *Antibodies:* Rabbit anti-FOXP3 recombinant monoclonal antibody [BLR034F] (A700-034 lot 2) used for IP at 20 μ l/mg lysate. FOXP3 was also immunoprecipitated by a previous lot of this antibody (A700-034 lot 1). For blotting immunoprecipitated FOXP3, A700-034 was used at 1:1000. Chemiluminescence with an exposure time of 30 seconds.



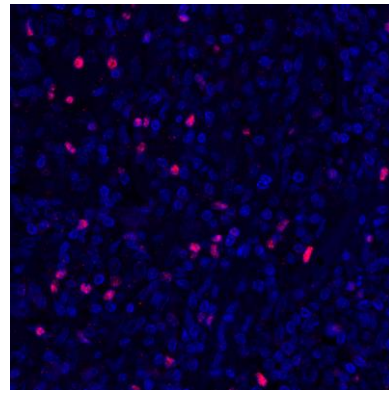
Detection of human FOXP3 in FFPE tonsil by immunohistochemistry. *Antibody:* Rabbit anti-FOXP3 recombinant monoclonal antibody [BLR034F] (A700-034 lot 2). *Secondary:* HRP-conjugated goat anti-rabbit IgG (A120-501P). *Substrate:* DAB.



Detection of human FOXP3 in FFPE breast carcinoma by immunohistochemistry. *Antibody:* Rabbit anti-FOXP3 recombinant monoclonal antibody [BLR034F] (A700-034 lot 2). *Secondary:* HRP-conjugated goat anti-rabbit IgG (A120-501P). *Substrate:* DAB.



Detection of human FOXP3 in FFPE MJ cells by immunocytochemistry. *Antibody:* Rabbit anti-FOXP3 recombinant monoclonal antibody [BLR034F] (A700-034 lot 2). *Secondary:* HRP-conjugated goat anti-rabbit IgG (A120-501P). *Substrate:* DAB.



Detection of human FOXP3 (red) by immunohistochemistry. *Sample:* FFPE section of human breast carcinoma. *Antibody:* Rabbit anti-FOXP3 recombinant monoclonal antibody [BLR034F] (A700-034 lot 1) used at 1:250. *Secondary:* HRP-conjugated goat anti-rabbit IgG (A120-501P). *Substrate:* Opal™. *Counterstain:* DAPI (blue).